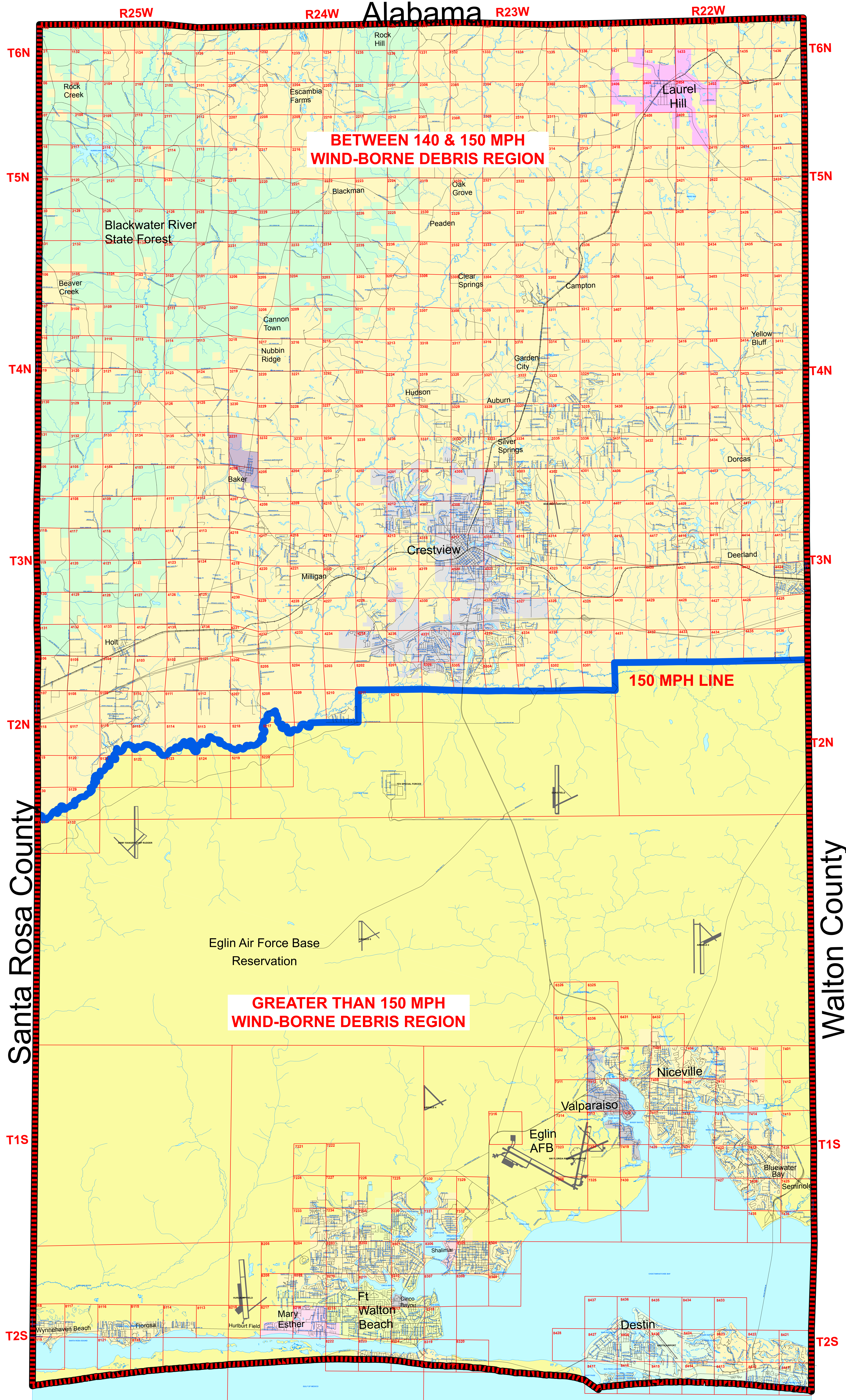


OKALOOSA COUNTY WIND ZONE MAP - OCCUPANCY CATEGORY III & IV

Effective March 6, 2012
Ordinance 12-08



Legend

ZONES

- 140 MPH / WIND-BORNE DEBRIS LINE
- 150 MPH

- STREETS
- RAILROAD
- STREAMS
- BAKER
- BLACKWATER RIVER SF
- CINCO BAYOU
- CRESTVIEW
- DESTIN
- EGLIN AFB
- FORT WALTON BEACH
- LAUREL HILL
- MARY ESTHER
- NICEVILLE
- SHALIMAR
- UNINCORPORATED
- VALPARAISO
- WATER

OCCUPANCY CATEGORY III

Buildings and other structures that represent a substantial hazard to human life in the event of failure, including but not limited to:

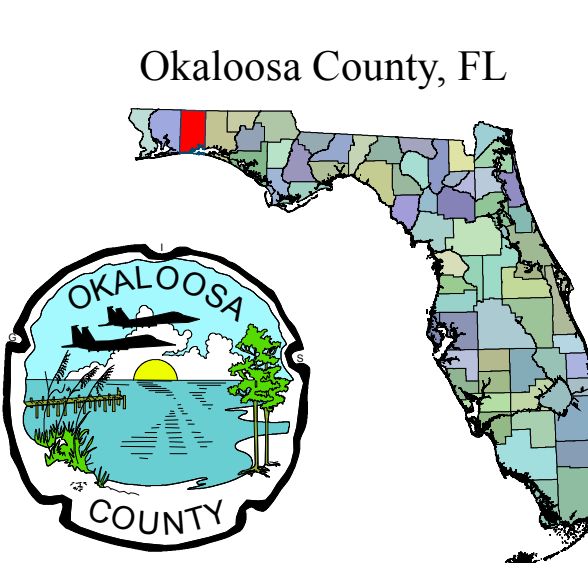
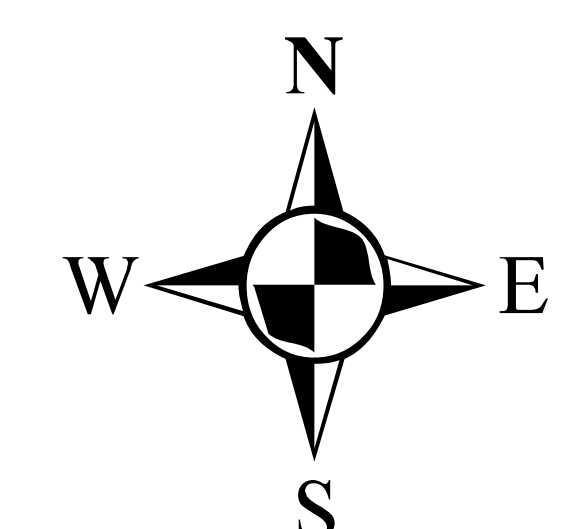
- Covered structures whose primary occupancy is public assembly with an occupant load greater than 300.
- Buildings and other structures with elementary school, secondary school or day care facilities with an occupant load greater than 250.
- Buildings and other structures with an occupant load greater than 500 for colleges or adult education facilities.
- Health care facilities with an occupant load of 50 or more resident patients, but not having surgery or emergency treatment facilities.
- Jails and detention facilities.
- Any other occupancy with an occupant load greater than 5,000.
- Power-generating stations, water treatment for potable water, waste water treatment facilities and other public utility facilities not included in Occupancy Category IV.
- Buildings and other structures not included in Occupancy Category IV containing sufficient quantities of toxic or explosive substances to be dangerous to the public if released.

OCCUPANCY CATEGORY IV

Buildings and other structures designated as essential facilities, including but not limited to:

- Hospitals and other health care facilities having surgery or emergency treatment facilities.
- Fire, rescue and police stations and emergency vehicle garages.
- Designated hurricane or other emergency shelters.
- Designated emergency preparedness, communication, and operation centers and other facilities required for emergency response.
- Power-generating stations and other public utility facilities required as emergency backup facilities for Occupancy Category IV structures.
- Structures containing highly toxic materials as defined by Section 307 where the quantity of the material exceeds the maximum allowable quantities of Table 307.1.(2).
- Aviation control towers, air traffic control centers and emergency aircraft hangars.
- Buildings and other structures having critical national defense functions.
- Water treatment facilities required to maintain water pressure for fire suppression.

The area within the red and black outline represents the Okaloosa County Wind-Borne Debris region (defined as the region south of the 140 mph line, which includes the entire County of Okaloosa)



Okaloosa County, FL
Department of Growth Management
3/07/2012

MAP PROJECTION:
Lambert Conformal Conic Projection
Stateplane: Florida North (9903)
NAD 1983(90), NAD 1983

PUBLIC RECORD:
This map was created by Okaloosa County GIS and is in the public domain pursuant to Chapter 119, Florida Statutes.

DISCLAIMER:
Okaloosa County hereby expressly disclaims any liability for errors or omissions in these maps, indexes or legends.

