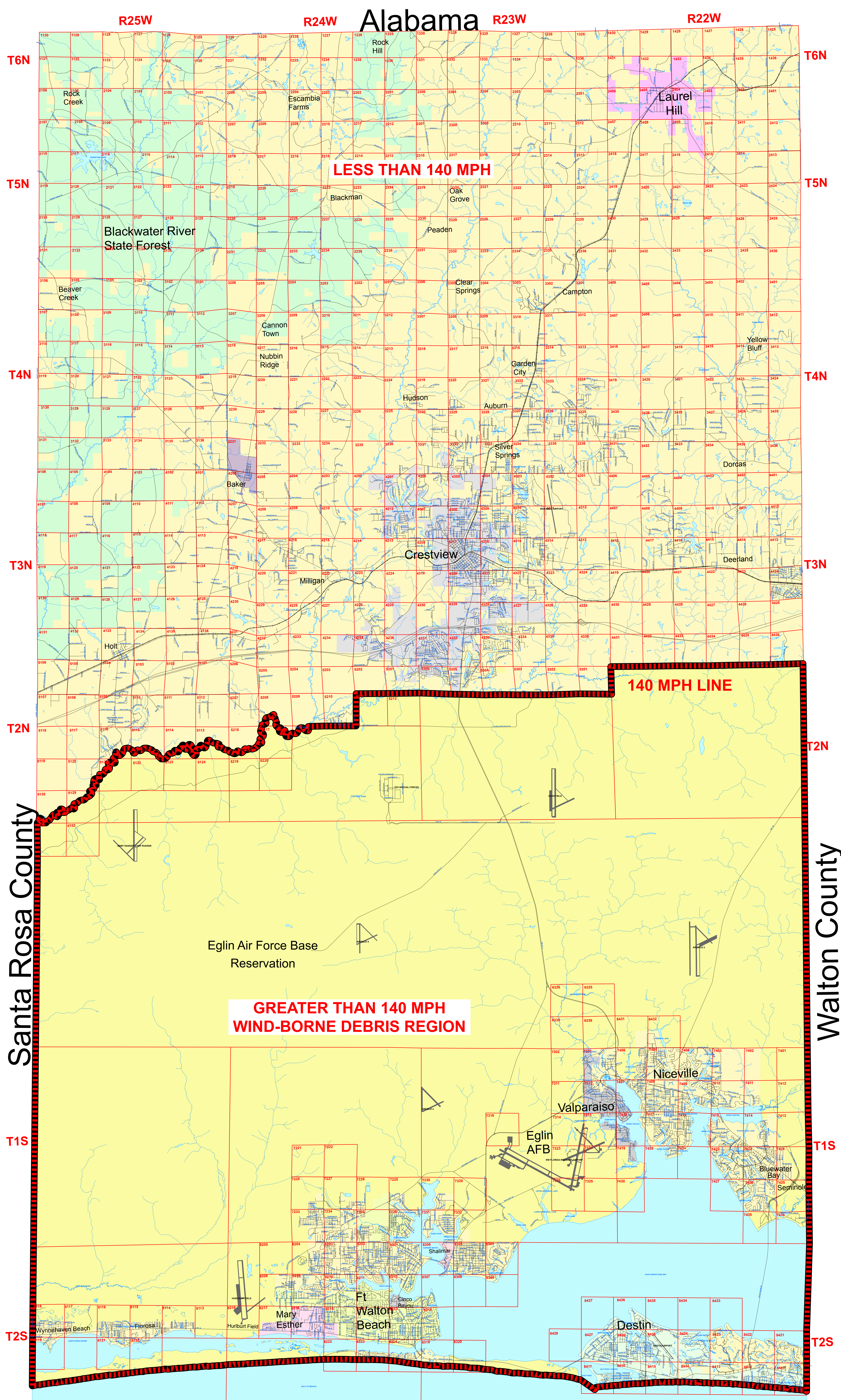


OKALOOSA COUNTY WIND ZONE MAP - OCCUPANCY CATEGORY II

Effective March 6, 2012
Ordinance 12-08



Legend

ZONES

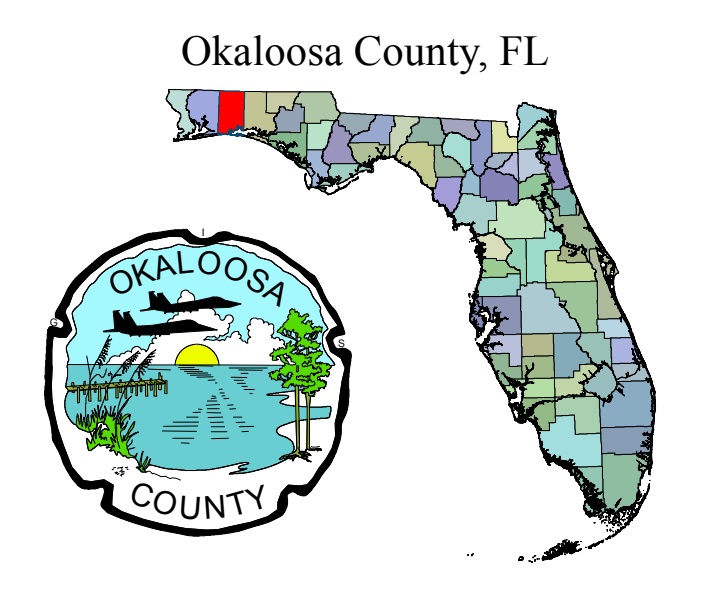
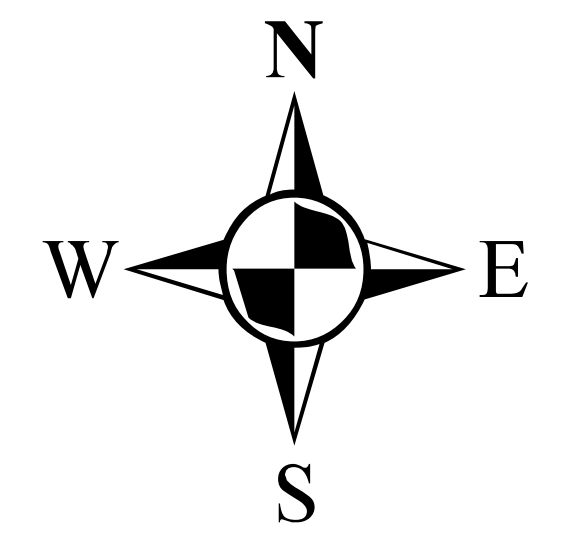
140 MPH / WIND-BORNE DEBRIS LINE

- STREETS
- RAILROAD
- STREAMS
- BAKER
- BLACKWATER RIVER SF
- CINCO BAYOU
- CRESTVIEW
- DESTIN
- EGLIN AFB
- FORT WALTON BEACH
- LAUREL HILL
- MARY ESTHER
- NICEVILLE
- SHALIMAR
- UNINCORPORATED
- VALPARAISO
- WATER

OCCUPANCY CATEGORY II

Buildings and other structures except those listed in Occupancy Categories I, III and IV

The area within the red and black outline represents the Okaloosa County Wind-Borne Debris region (defined as the region south of the 140 mph/Wind Borne Debris Line to the Gulf of Mexico and between the Walton/Santa Rosa County lines)



Department of Growth Management
3/07/2012

MAP PROJECTION:
Lambert Conformal Conic Projection
Stateplane: Florida North (9903)
NAD 1983(90), NAD 1988

PUBLIC RECORD:
This map was created by Okaloosa County GIS and is in the public domain pursuant to Chapter 119, Florida Statutes.

DISCLAIMER:
Okaloosa County hereby expressly disclaims any liability for errors or omissions in these maps, indexes or legends.

