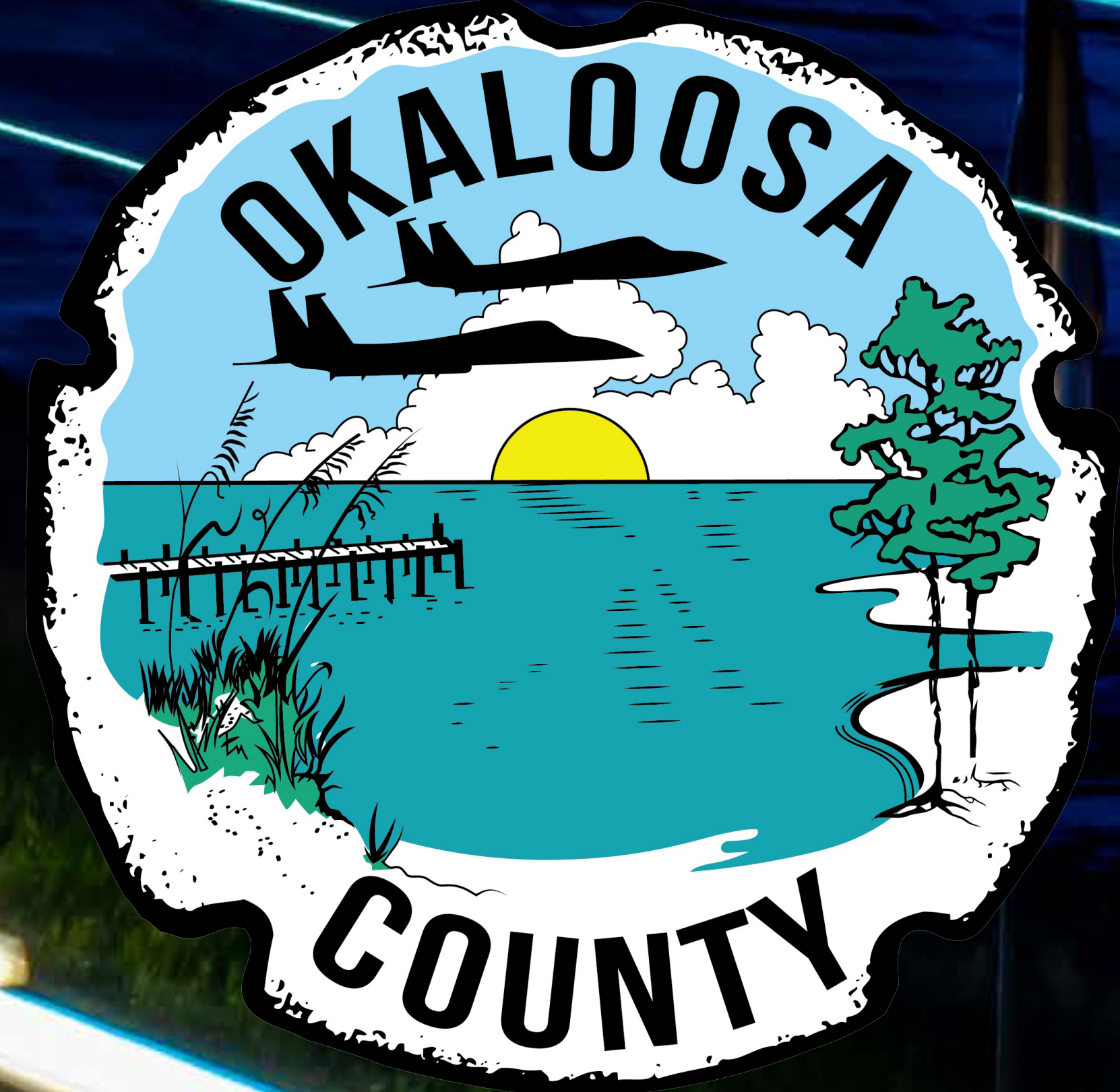




Okaloosa County

**NORTHWEST  
CRESTVIEW  
BYPASS**



**WELCOME**

*Okaloosa County*  
**Northwest Crestview Bypass  
Alternative Corridor Evaluation  
Alternatives Public Meeting**

**November 17, 2022**



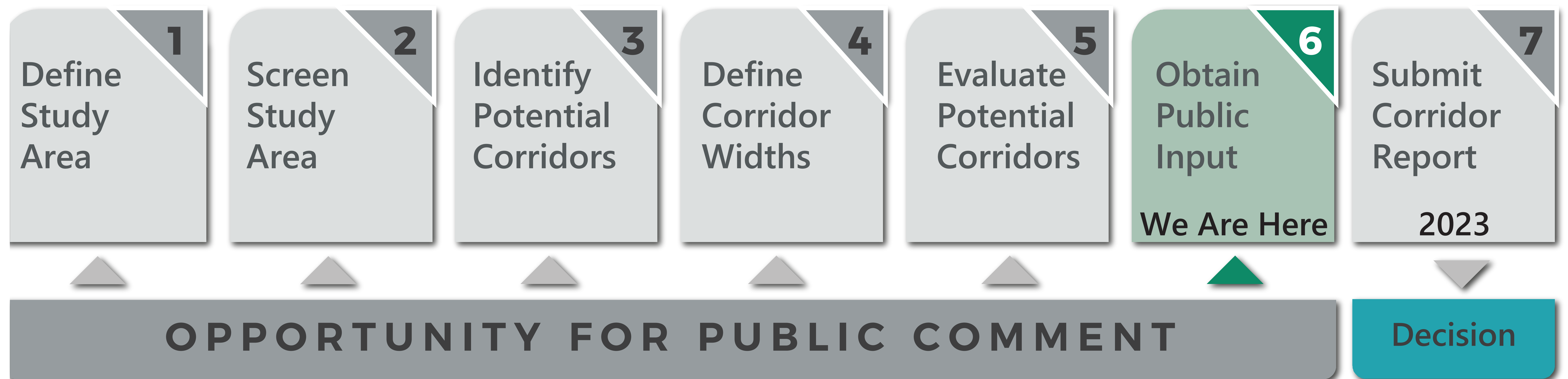




# Alternative Corridor Evaluation (ACE) Process



- Follows structured process established by Florida Department of Transportation (FDOT)
- Allows for elimination of alternatives
- Provides a process to advance recommended alternative to next phase
- Meets planning requirements of the National Environmental Policy Act (NEPA)



**Station  
2**

**Northwest Crestview Bypass  
Alternative Corridor Evaluation (ACE)**

Alternatives Public Meeting  
FPID: 438139-1-24-01  
ETDM: 14450

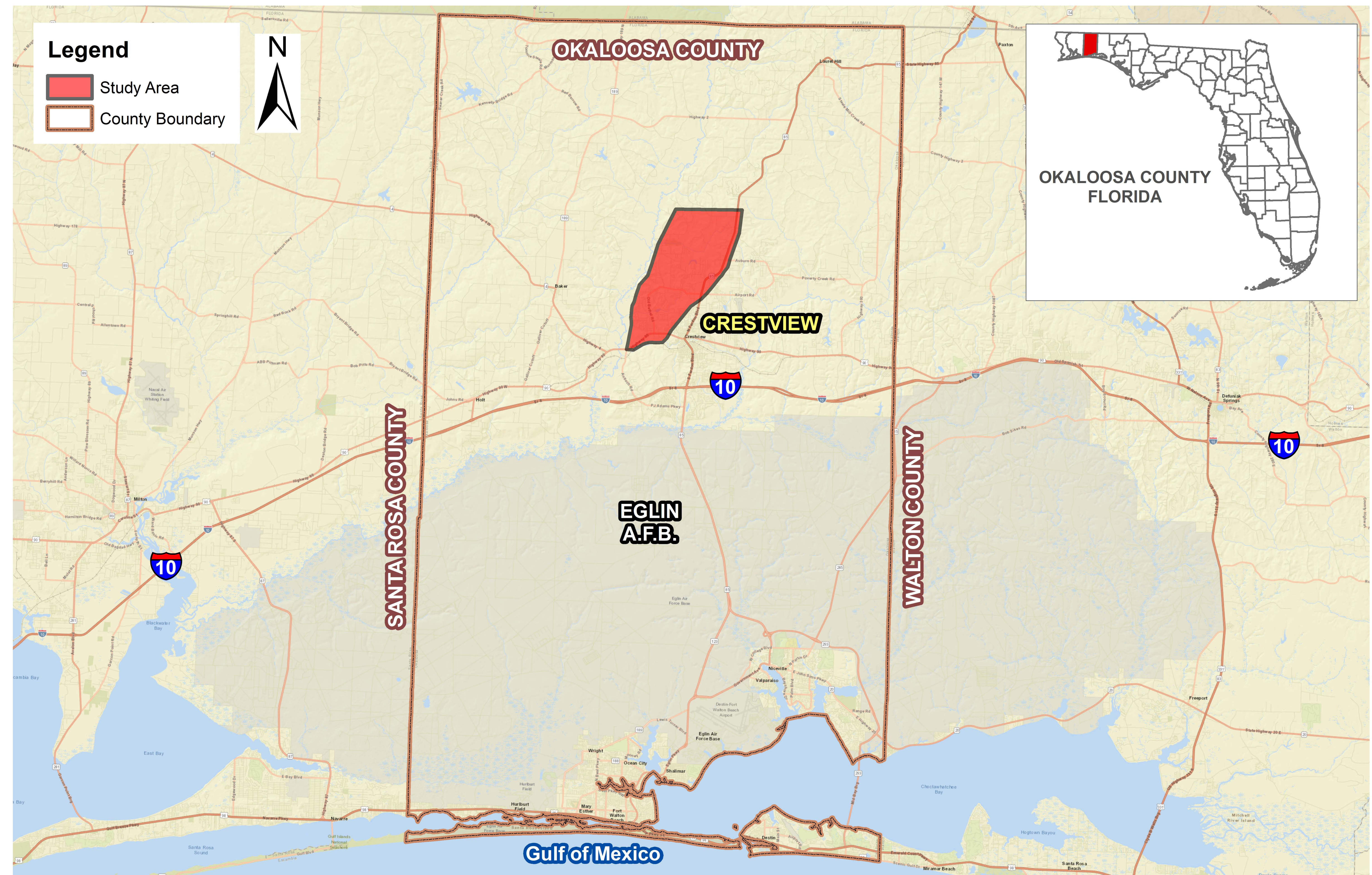




# Purpose and Need



- Improve mobility and provide regional connectivity
- Provide alternative to State Road 85
- Connect to Southwest Crestview Bypass currently under construction
- Create Northwest Crestview Bypass link between U.S. 90 and State Road 85
- Maintain consistency with local government comprehensive plans



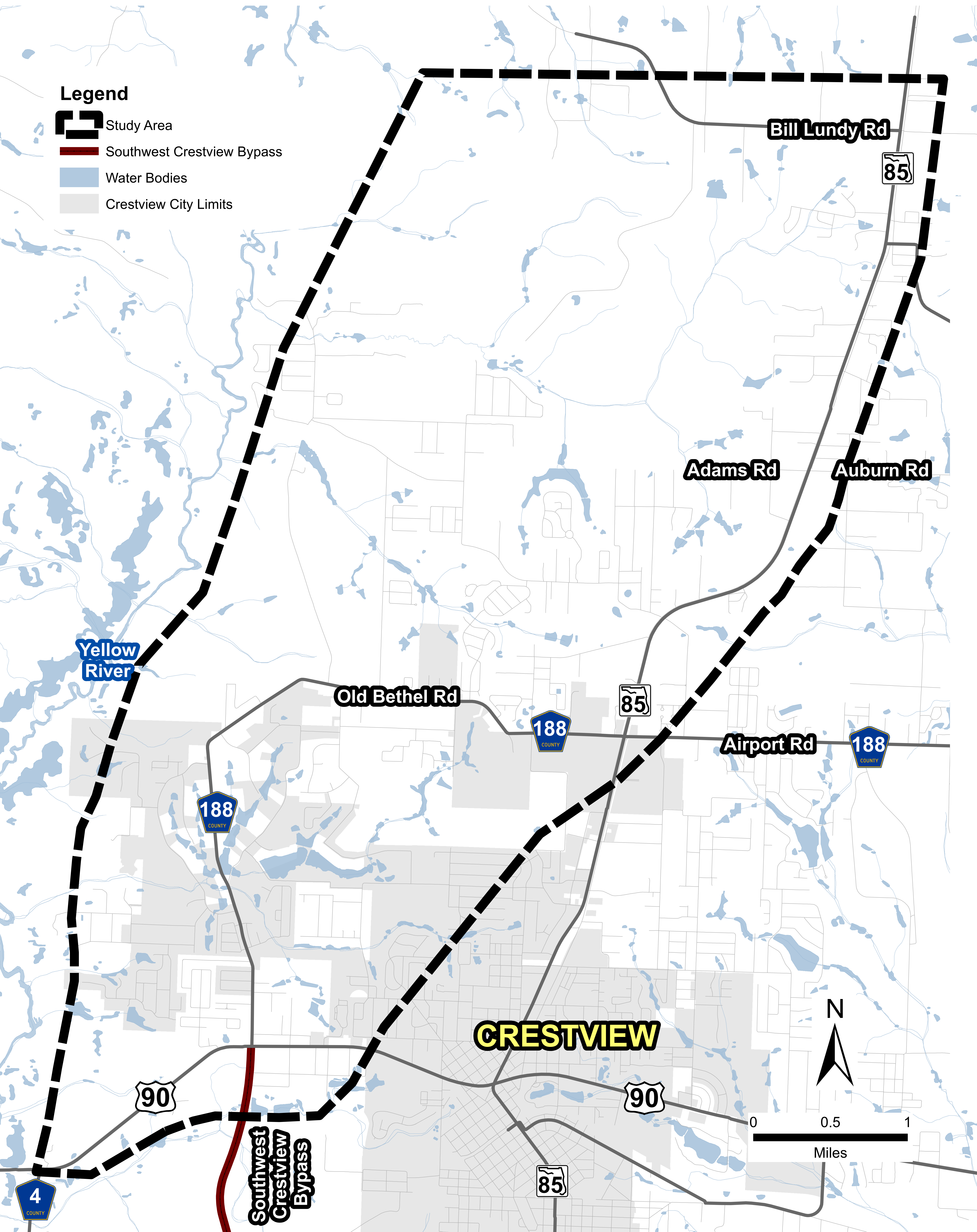


# Study Area



## Legend

- Study Area
- Southwest Crestview Bypass
- Water Bodies
- Crestview City Limits



- East of Yellow River, North of U.S. 90, West of State Road 85
- Defined by Okaloosa County, City of Crestview, and Okaloosa-Walton Transportation Planning Organization (TPO)

**Station  
2**

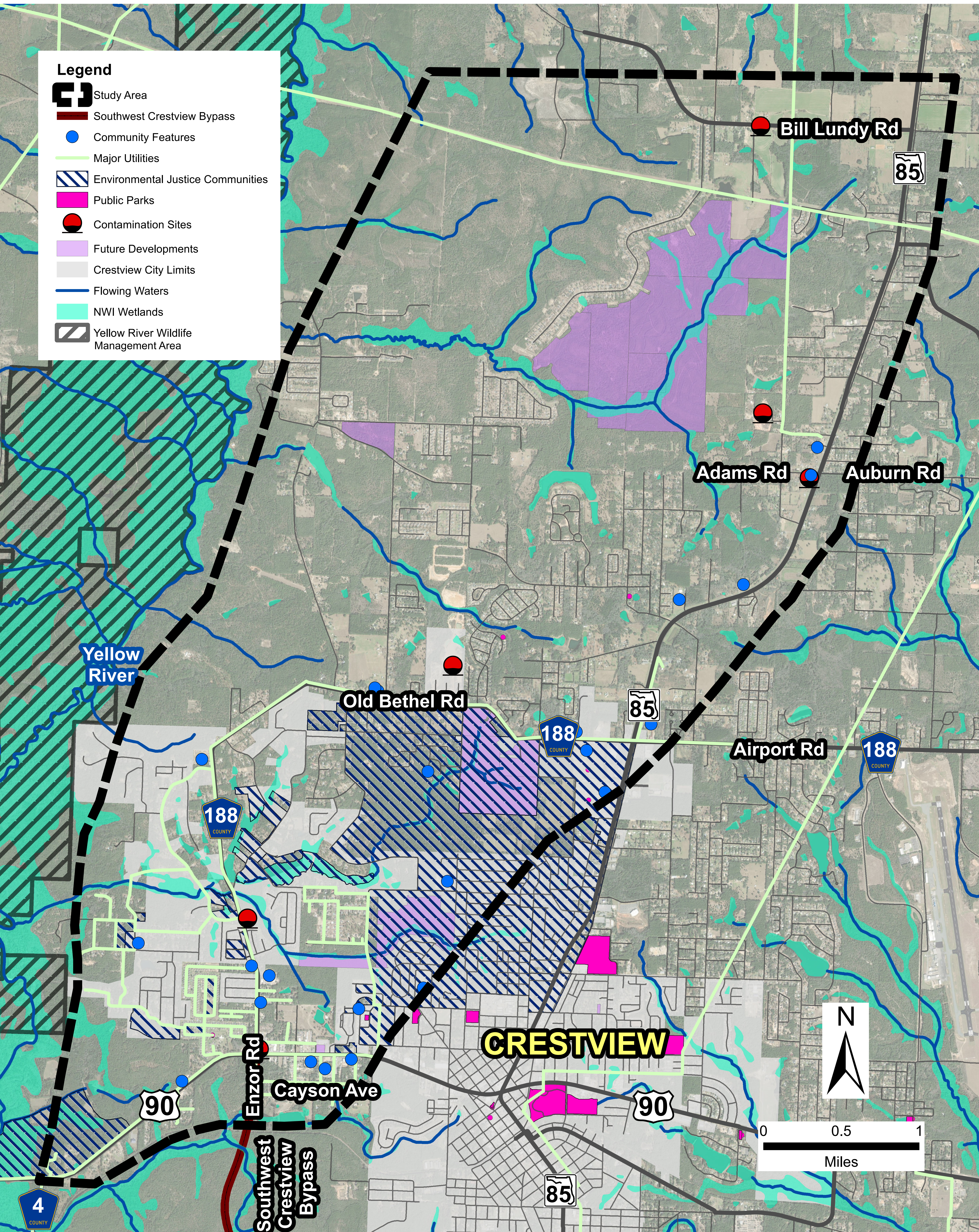
**Northwest Crestview Bypass  
Alternative Corridor Evaluation (ACE)**

Alternatives Public Meeting  
FPID: 438139-1-24-01  
ETDM: 14450





# Environmental Constraints



- Communities
- Wetland, Creeks
- Public Parks
- Yellow River
- Future Development
- Utilities
- Farmland

**Station  
3**

**Northwest Crestview Bypass  
Alternative Corridor Evaluation (ACE)**

Alternatives Public Meeting  
FPID: 438139-1-24-01  
ETDM: 14450

# NORTHWEST CRESTVIEW BYPASS



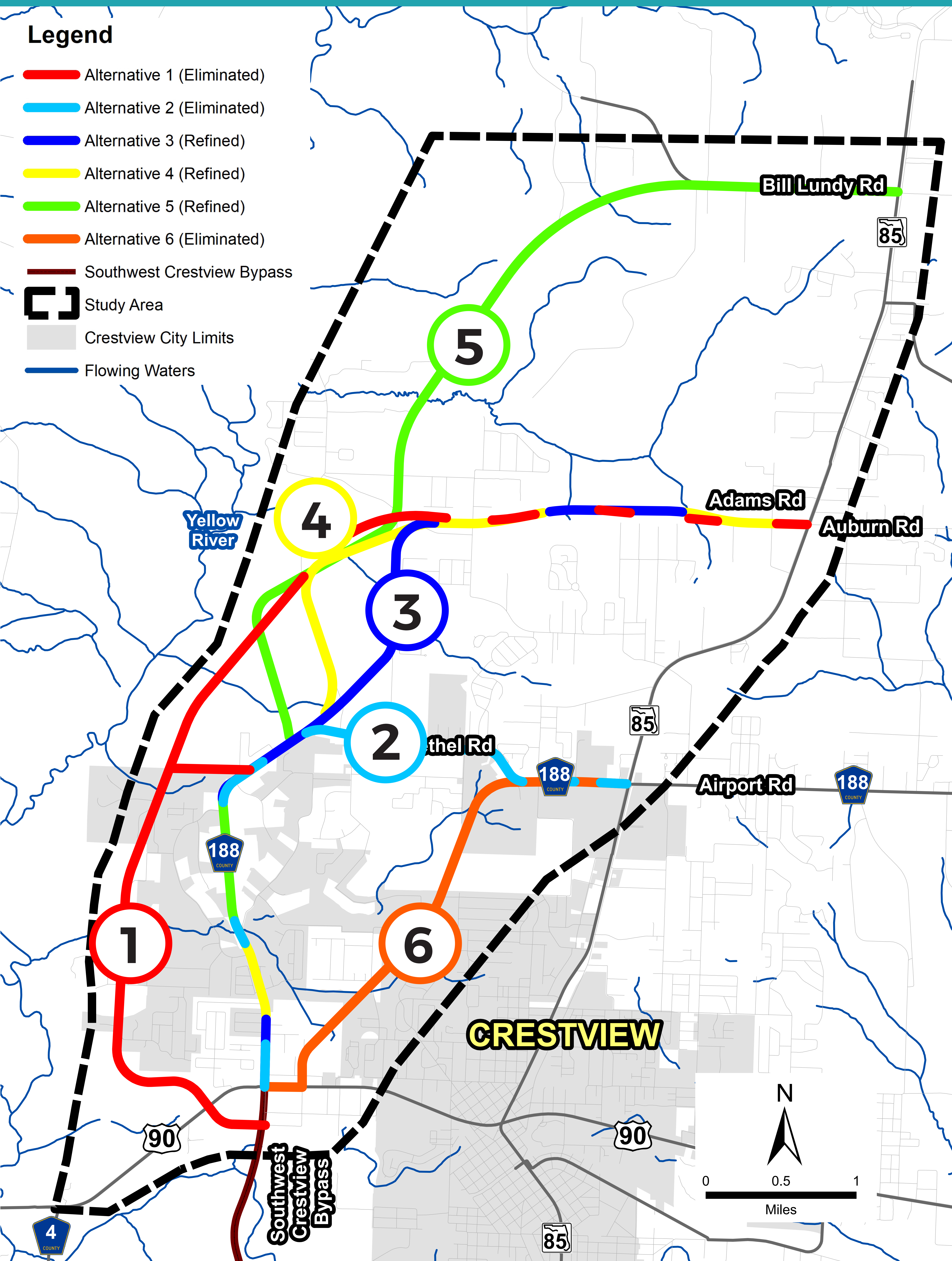


# Initial Corridor Alternatives



## Legend

- Alternative 1 (Eliminated)
- Alternative 2 (Eliminated)
- Alternative 3 (Refined)
- Alternative 4 (Refined)
- Alternative 5 (Refined)
- Alternative 6 (Eliminated)
- Southwest Crestview Bypass
- Study Area
- Crestview City Limits
- Flowing Waters



- Six initial corridors that build on previous studies
- Links to Southwest Crestview Bypass (under construction)
- Considers potential Eastern Crestview Bypass (future possibility)
- 250-ft wide corridor for evaluation purposes (actual will be less)
- Corridor Alternatives 3, 4, & 5 have been refined
- Corridor Alternatives 1, 2, and 6 have been eliminated

**Station  
3**

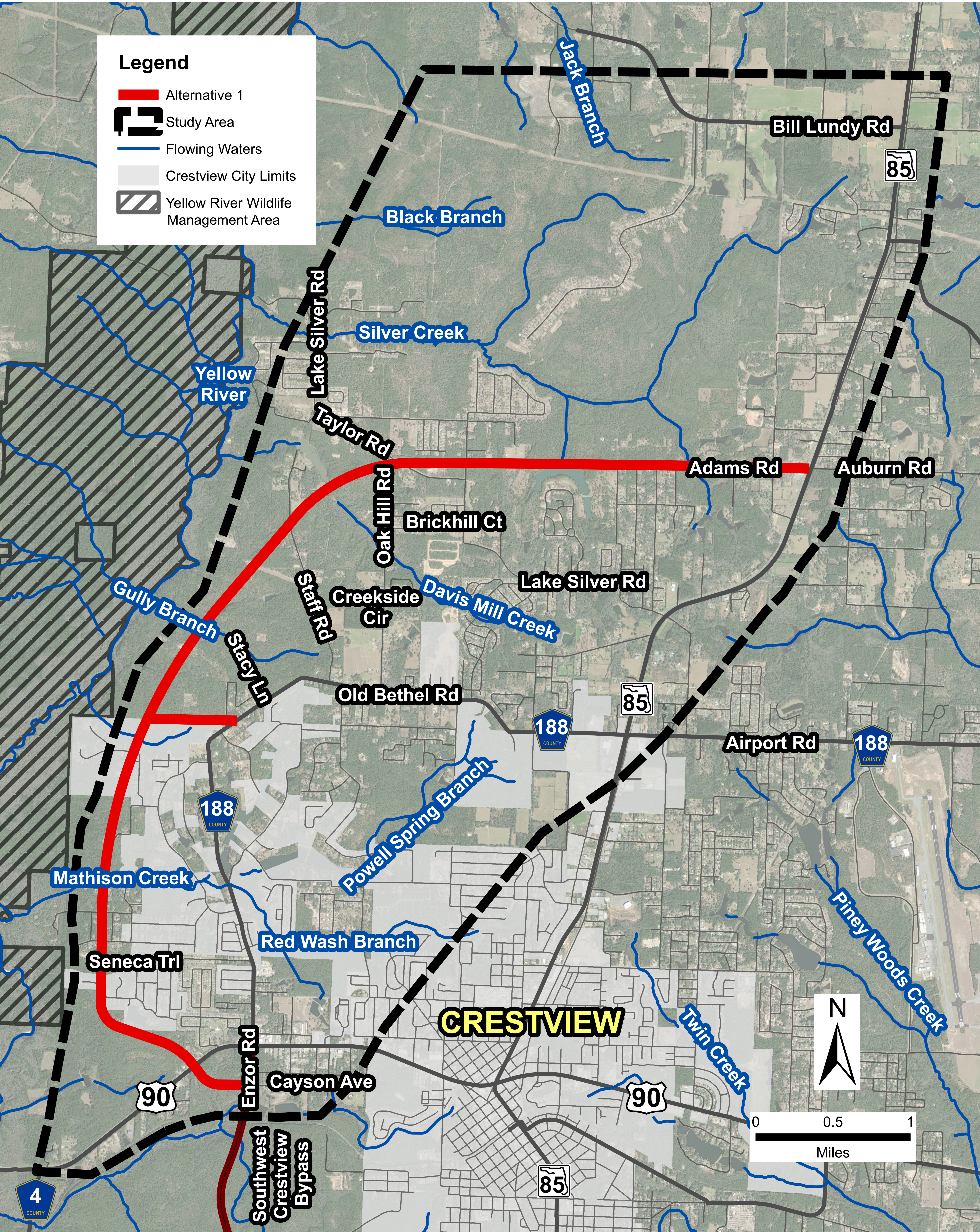
**Northwest Crestview Bypass  
Alternative Corridor Evaluation (ACE)**

Alternatives Public Meeting  
FPID: 438139-1-24-01  
ETDM: 14450





# Corridor 1 Summary

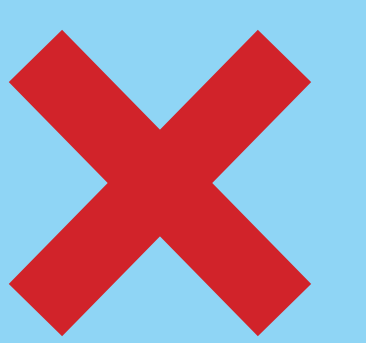


### Advantages

- Western-most alignment
- Avoids Old Bethel Road
- Expands roadway network

### Disadvantages

- Agency concerns over proximity to Yellow River natural areas
- Not consistent with county comprehensive plan for River Protection Zone
- Therefore, does not meet primary purpose and need



**Eliminated from Further Analysis**

**Station 4**

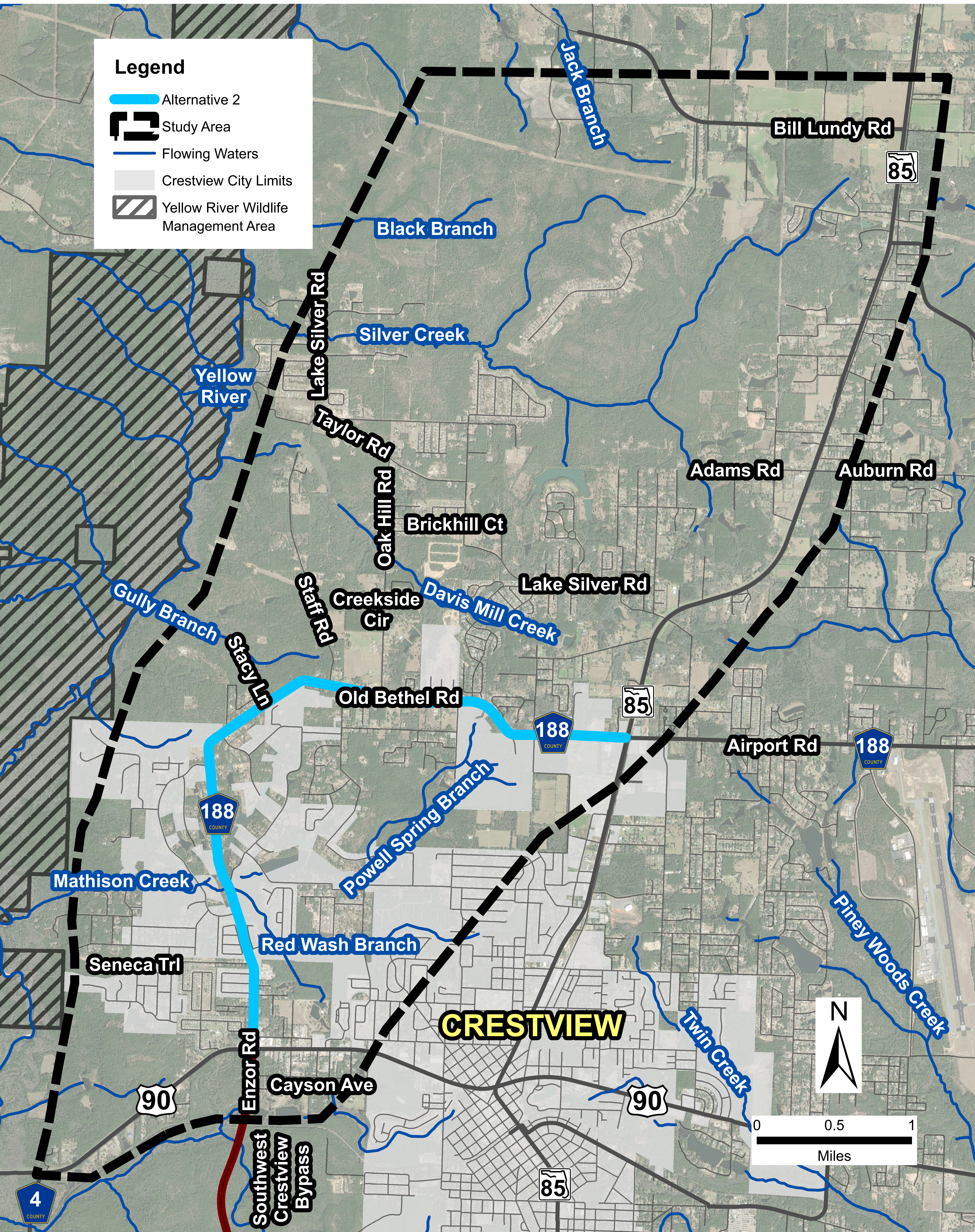
**Northwest Crestview Bypass  
Alternative Corridor Evaluation (ACE)**

Alternatives Public Meeting  
FPID: 438139-1-24-01  
ETDM: 14450





# Corridor 2 Summary



**Advantages**

- Central corridor

**Disadvantages**

- Does not create new network
- Does not improve regional connectivity
- Therefore does not meet primary purpose and need

**Eliminated from Further Analysis**

**Station 4**

**Northwest Crestview Bypass  
Alternative Corridor Evaluation (ACE)**

Alternatives Public Meeting  
FPID: 438139-1-24-01  
ETDM: 14450



# Corridor 3 Summary



- Advantages**
- Expands regional connectivity and provides new roadway network
  - Creates new northerly connection to Adams / Auburn Road
  - Opportunity for northern extension to Bill Lundy Road (Alternative 5)

- Disadvantages**
- Does not avoid right-of-way and relocations on Old Bethel Road
  - Utility conflicts on Old Bethel Road

  
**Remains Under Consideration**

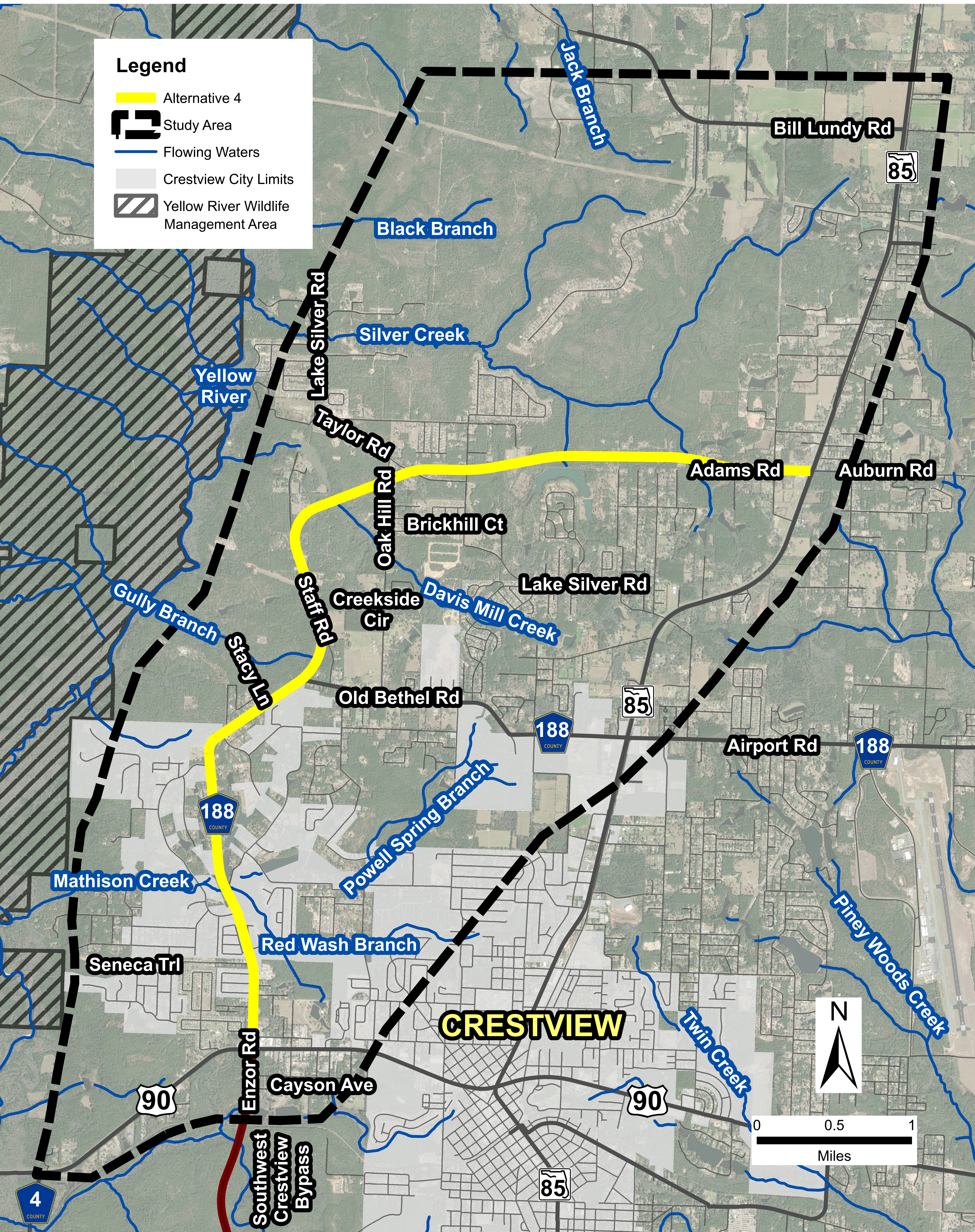
**Station 4**

**Northwest Crestview Bypass  
 Alternative Corridor Evaluation (ACE)**

Alternatives Public Meeting  
 FPID: 438139-1-24-01  
 ETDM: 14450



# Corridor 4 Summary



- Advantages**
- Expands regional connectivity and provides new roadway network
  - Creates new northerly connection to Adams / Auburn Road
  - Opportunity for northern extension to Bill Lundy Road (Alternative 5)

- Disadvantages**
- Does not avoid right-of-way and relocations on Old Bethel Road
  - Utility conflicts on Old Bethel Road

  
**Remains Under Consideration**

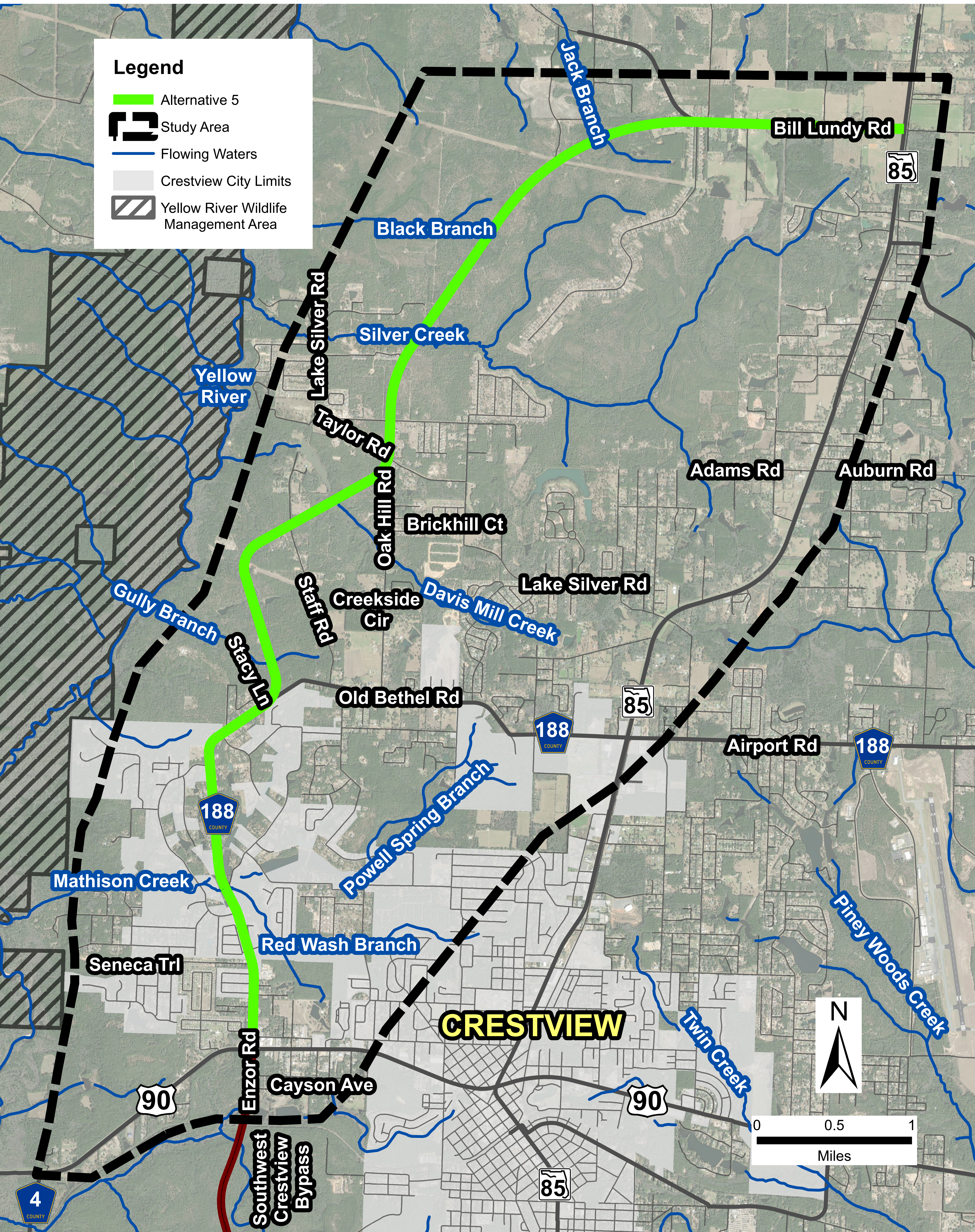
**Station 4**

**Northwest Crestview Bypass  
 Alternative Corridor Evaluation (ACE)**

Alternatives Public Meeting  
 FPID: 438139-1-24-01  
 ETDM: 14450



# Corridor 5 Summary



### Advantages

- Expands regional connectivity and provides new roadway network
- Creates new northerly connection to Bill Lundy Road
- Avoids future developments
- Best accommodates future growth north of Crestview
- Provides opportunity for collector street extension to Auburn Road

### Disadvantages

- Does not avoid right-of-way and relocations on Old Bethel Road
- Utility conflicts on Old Bethel Road
- Greater cost and impacts due to greater length



**Remains Under Consideration**

**Station 4**

**Northwest Crestview Bypass  
Alternative Corridor Evaluation (ACE)**

Alternatives Public Meeting  
FPID: 438139-1-24-01  
ETDM: 14450



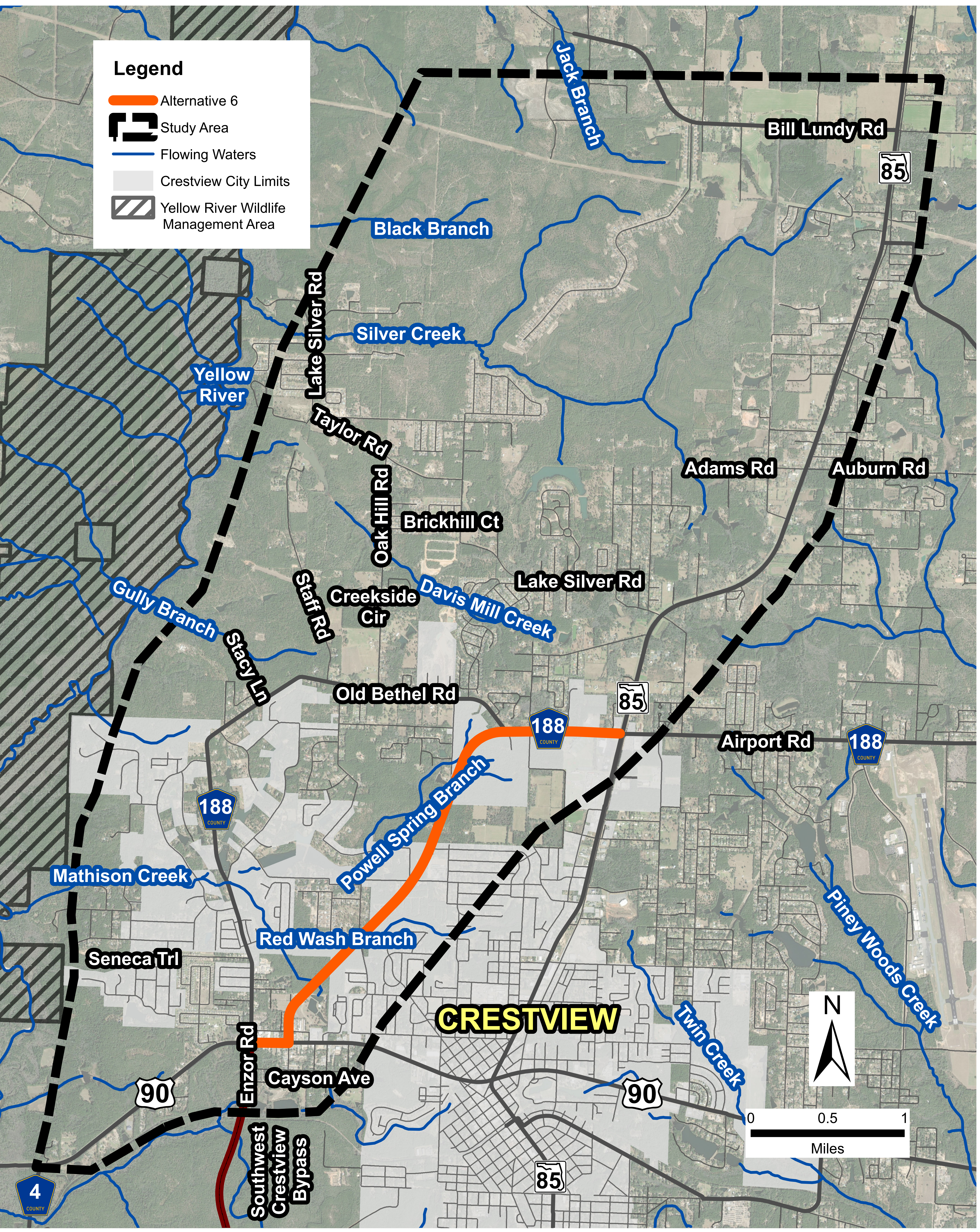


# Corridor 6 Summary



**Legend**

- Alternative 6
- Study Area
- Flowing Waters
- Crestview City Limits
- Yellow River Wildlife Management Area



- Advantages**
- Avoids Old Bethel Road
  - Greatest distance from Yellow River
- Disadvantages**
- Does not provide regional connectivity
  - Not consistent with county and city comprehensive plans for future development
  - Therefore, does not meet primary purpose and need

**X**  
**Eliminated from Further Analysis**

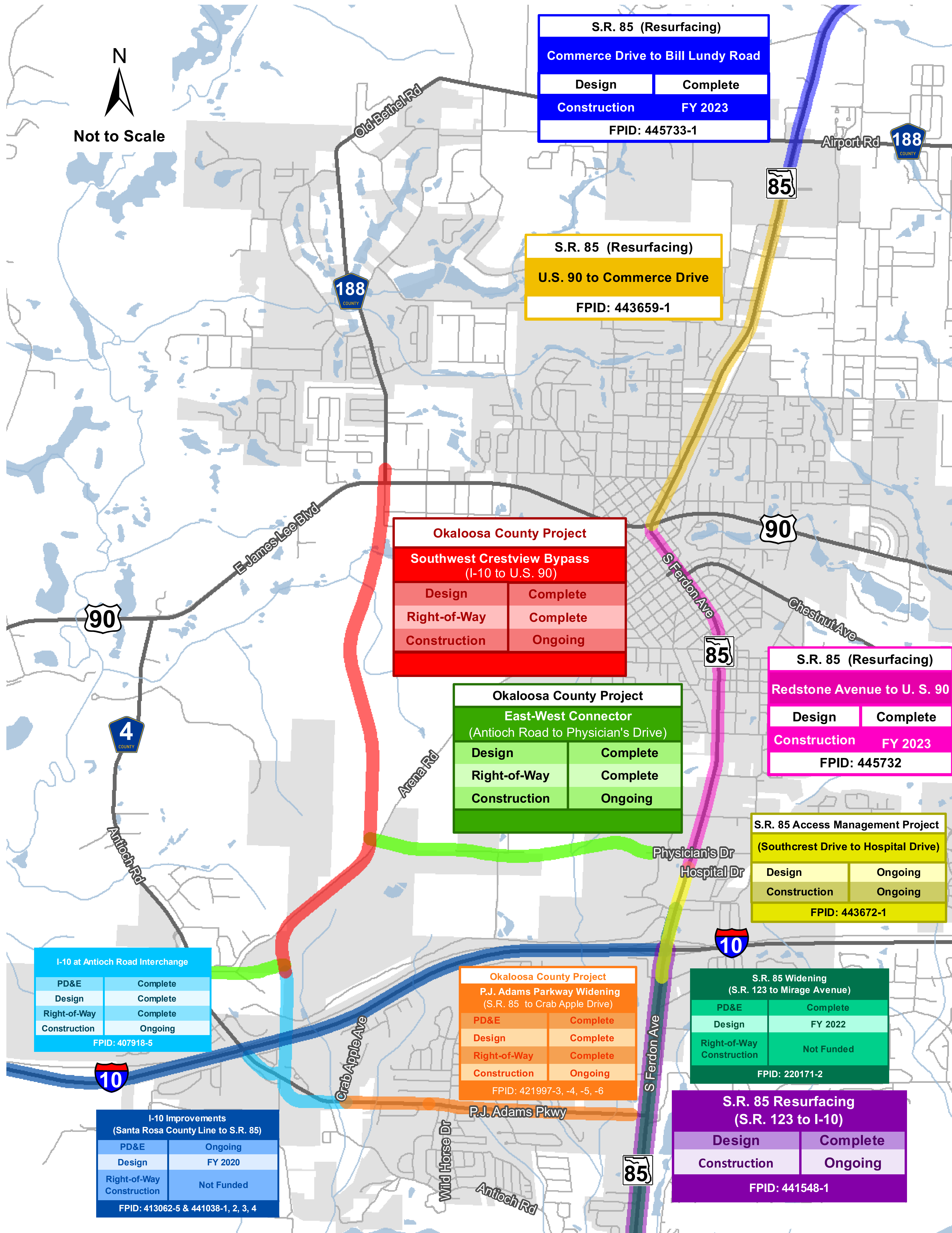
**Station 4**

**Northwest Crestview Bypass  
 Alternative Corridor Evaluation (ACE)**

Alternatives Public Meeting  
 FPID: 438139-1-24-01  
 ETDM: 14450



# Area Projects



- Northwest Crestview Bypass will link to Southwest Crestview Bypass and projects currently under construction

**Station 5**

**Northwest Crestview Bypass Alternative Corridor Evaluation (ACE)**

Alternatives Public Meeting  
 FPID: 438139-1-24-01  
 ETDM: 14450

# NORTHWEST CRESTVIEW BYPASS



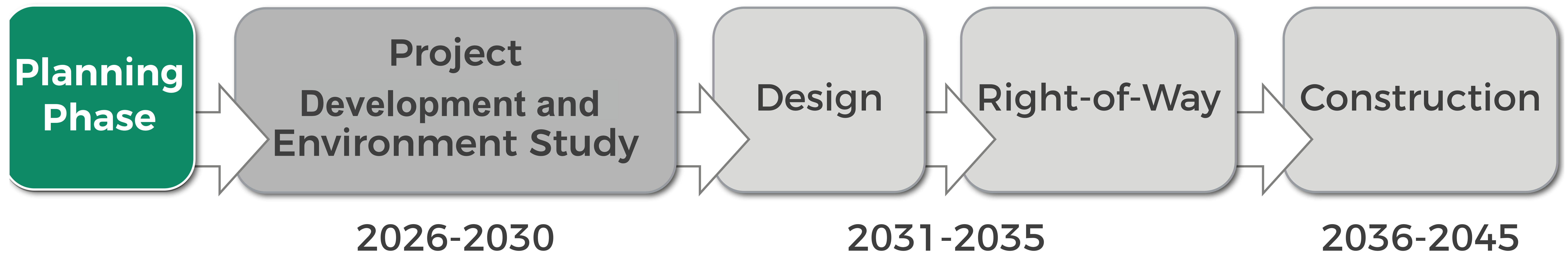




# Next Steps

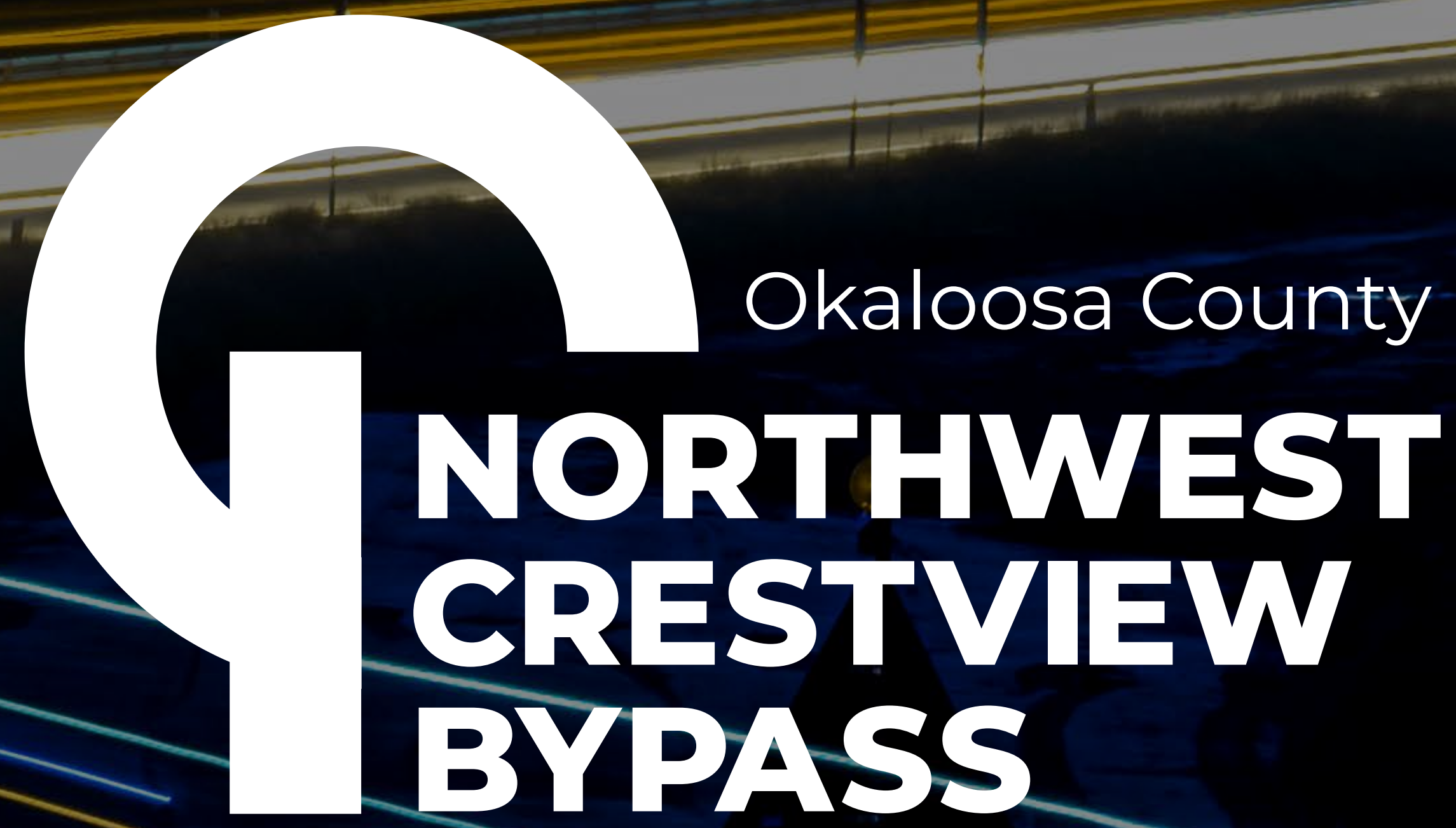
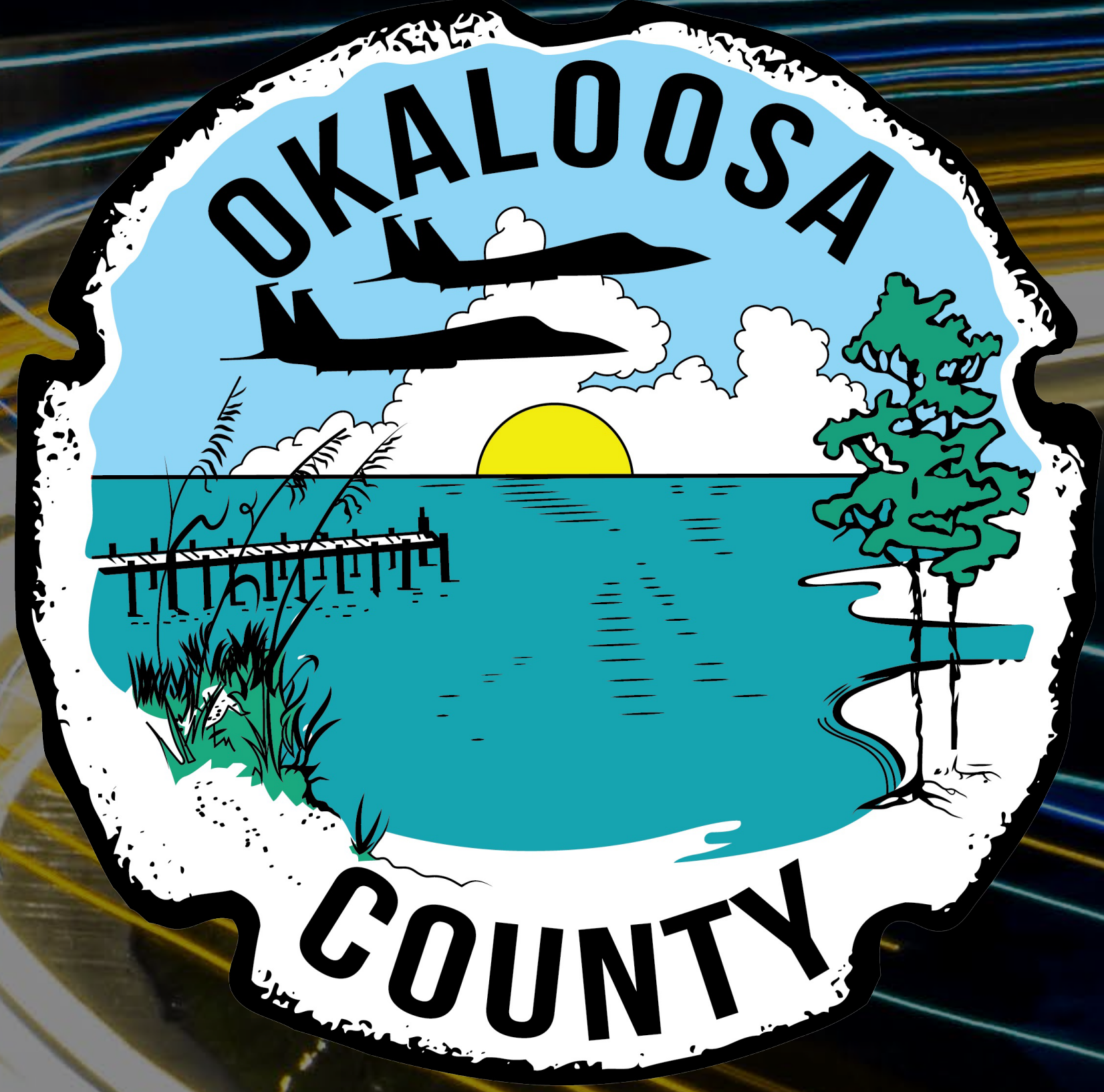
- ACE is the initial Planning Phase (2022)
- ACE determines the corridor(s) to advance (2023)
- Next phase is Project Development and Environment (PD&E) Study (2026 - 2030)
- Design, Right-of-Way, and Construction are not yet funded (2031 - 2045)

**We Are Here**



**Future phases are not funded. Timeframes shown are estimates based on the Okaloosa-Walton Transportation Planning Organization (O-W TPO) 2045 Long Range Transportation Plan.**





**THANK YOU**

*Okaloosa County*  
**Northwest Crestview Bypass  
Alternative Corridor Evaluation  
Alternatives Public Meeting**

**Comments & Questions?**

1. Fill out comment form at meeting.
2. Email or contact project manager.

Comments to:

**Stephen Blalock, P.E.**

Okaloosa County Public Works

NWCB@myokaloosa.com

(850) 683-6259

**Your Input is Needed**

**Comment period closes Friday, December 2, 2022.**