

ADDENDUM NO. 2

TO: ALL BIDDERS
PROJECT: ITB PW 37-19 – FOY SHAW PARKWAY
BID TIME AND DATE: 03:00 PM (CST), September 4, 2019 (NO CHANGE)

August 27, 2019

The following items are hereby incorporated into the project manual, procurement documents, contract documents, plans and specifications:

ITEM NO. 1 – DOCUMENT 00100 INSTRUCTIONS TO BIDDERS

Revised Article 8.02 (increase number of days bid held) of Document 00100 to read:

- 8.02 The Bid security of the Successful BIDDER will be retained until such BIDDER has executed the Contract Documents, furnished the required contract security and met the other conditions of the Notice of Award, whereupon the Bid security will be released. If the Successful BIDDER fails to execute and deliver the Contract Documents and furnish the required contract security within 10 days after the Notice of Award, OWNER may annul the Notice of Award and the Bid security of that BIDDER will be forfeited. The Bid security of other BIDDERS whom OWNER believes to have a reasonable chance of receiving the award may be retained by OWNER until the earlier of ten (10) days after the effective date of the Agreement or seventy-five (75) days after the bid opening whereupon Bid security furnished by such BIDDER will be returned.

ITEM NO. 2 – DOCUMENT 00100 INSTRUCTIONS TO BIDDERS

Revised Article 17.02 (increase number of days before bid can be withdrawn) of Document 00100 to read:

- 17.02 Once bids are open, the bid submittal may not be withdrawn for seventy-five (75) days, unless within 24 hours after Bids are opened the BIDDER files a duly signed written notice with OWNER and promptly thereafter demonstrates to the reasonable satisfaction of OWNER that there was a material and substantial mistake in the preparation of its Bid, that BIDDER may withdraw its Bid, and the Bid security will be returned. Thereafter, if the Work is rebid, that BIDDER will be disqualified from (1) further bidding on the Work, and (2) doing any work on the Contract, either as a subcontractor or any other capacity.

ITEM NO. 3 – DOCUMENT 00100 INSTRUCTIONS TO BIDDERS

Revised Article 19.01 (increase number of days bid is subject to acceptance) of Document 00100 to read:

19.01 All Bids will remain subject to acceptance for the period of seventy-five (75) days after the day of the bid opening, but the OWNER may, in its sole discretion, release any Bid and return the Bid security prior to the end of this period.

ITEM NO. 4 – SECTION 00410 BID FORM WITH ATTACHMENTS

Revised Article 2.01 (increase number of days bid is subject to acceptance) of Document 00410 to read:

2.01 BIDDER accepts all of the terms and conditions of the Instructions to BIDDERS, including without limitation those dealing with the disposition of Bid security. This Bid will remain subject to acceptance for 75 days after the Bid opening, or for such longer period of time that BIDDER may agree to in writing upon request of OWNER.

ITEM NO. 5 – SECTION 00410 BID FORM WITH ATTACHMENTS

The Bid Schedule, pages 00410-3 through 00410-5 has been revised: Changes to Item No. 38. Replace Pages 00410-3 through 00410-5 with the revised pages 000410-3 through 00410-5 (transmitted herewith and labeled as Addendum No. 2 in the heading).

ITEM NO. 6 – PROJECT DRAWINGS

The following project drawings are revised: Sheet Number 1, Sheet Number 2, Sheet Number 7 and Sheet Number 47. Copies of the revised drawings are attached and labeled as Addendum No. 2 in bottom left corner.

ITEM NO. 7 – QUESTIONS RECEIVED AT PRE-BID MEETING AND LATER

Question 1 – Will you send a typical section for the pond driveways?

Answer: – The pond driveways are 12-foot wide sodded earth berm with a flat cross slope and should be graded as shown on the Pond Details sheets.

Question 2 – Sheet Nos. 144-146. Due to the location of the temp sheet pile, and the risk of damaging the stabilized slopes, can vinyl sheets be used and left in place rather than using steel and removing after slopes are stabilized?

Answer: – Vinyl sheets are an acceptable alternate to steel but shall be left in place. Pay Item 455-133-2 will be inclusive of furnish, place, and remove Sheet Piling Steel or furnish, place and leave in place Sheet Piling Vinyl. No separate pay item will be made for restoration of grounds disturbed by Sheet Piling Steel removal. Lengths of sheet piling, steel or vinyl, shall be in accordance with Design Notes, Sheet No. 10 of the plans.

END OF QUESTIONS

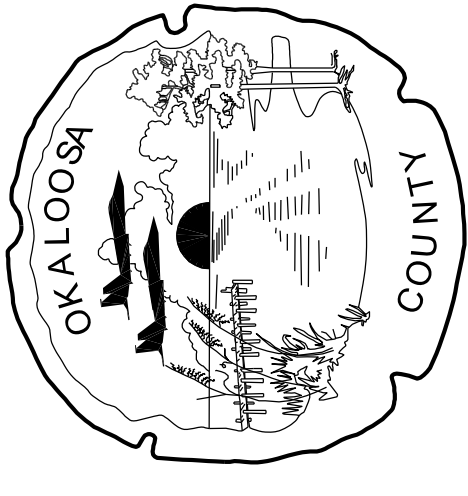
RECEIPT OF THIS ADDENDUM SHALL BE ACKNOWLEDGED BY WRITING THIS
ADDENDUM NUMBER AND DATE IN THE SPACE PROVIDED ON DOCUMENT 00410-8,
'*ADDENDUM ACKNOWLEDGEMENT - ATTACHMENT A.*'

/s/ Roy Petrey
Roy Petrey, P.E.
Project Manager

BID TABULATION FOR FOY SHAW PARKWAY - FPN 425617-2-94-01						
Item No.	Pay Item No.	Description	UNIT	ESTIMATED QUANTITY	BID UNIT PRICE	BID PRICE
1	0101-1	MOBILIZATION	LS	1	\$	\$
2	0102-1	MAINTENANCE OF TRAFFIC	LS	1	\$	\$
3	0102-3	COMMERIAL MATERIAL FOR DRIVEWAY MAINTENANCE	CY	27	\$	\$
4	0102-60	WORK ZONE SIGNS	ED	11070	\$	\$
5	0102-74-1	CHANNELIZING DEVICES - DRUMS	ED	4050	\$	\$
6	0102-74-2	CHANNELIZING DEVICES - TYPE III	ED	3240	\$	\$
7	0102-99	PORTABLE CHANGEABLE MESSAGE SIGN	ED	1080	\$	\$
8	0102-911-2	REMOVABLE TAPE PAVEMENT MARKING - WHITE/BLACK	LF	620	\$	\$
9	0102-912-2	REMOVABLE TAPE PAVEMENT MARKING - YELLOW	LF	460	\$	\$
10	0104-1	ARTIFICIAL COVERINGS/ROLLED EROSION CONTROL	SY	58356	\$	\$
11	0104-10-3	SEDIMENT BARRIER	LF	12178	\$	\$
12	0104-12	STAKED TURBIDITY BARRIER	LF	3159	\$	\$
13	0104-15	SOIL TRACKING PREVENTION DEVICE	EA	4	\$	\$
14	0104-18	INLET PROTECTION DEVICE	EA	25	\$	\$
15	0110-1-1	CLEARING AND GRUBBING	LS/AC	1/17.59	\$	\$
16	0110-4-10	REMOVAL OF EXISTING CONCRETE	SY	386	\$	\$
17	0120-1	REGULAR EXCAVATION	CY	49296	\$	\$
18	0120-4	SUBSOIL EXCAVATION	CY	4450	\$	\$
19	0120-6	EMBANKMENT	CY	136151	\$	\$
20	0160-4	TYPE B STABILIZATION	SY	20268	\$	\$
21	162-1-11	PREPARED SOIL LAYER, FINISH SOIL, 6"	SY	58356	\$	\$
22	285701	OPTIONAL BASE GROUP 01	SY	4366	\$	\$
23	285706	OPTIONAL BASE GROUP 06	SY	15064	\$	\$

BID TABULATION FOR FOY SHAW PARKWAY - FPN 425617-2-94-01 (Continued)						
Item No.	Pay Item No.	Description	UNIT	ESTIMATED QUANTITY	BID UNIT PRICE	BID PRICE
24	0334-1-12	SUPERPAVE ASPHALT - TRAFFIC B	TN	1996.2	\$	\$
25	0337-7-80	FRICTION COURSE TRAFFIC B FC-9.5	TN	988.5	\$	\$
26	0400-1-2	CONCRETE CLASS I - END WALL	CY	20.9	\$	\$
27	0400-2-2	CONCRETE CLASS II - END WALL	CY	27.4	\$	\$
28	0415-1-6	REINFORCING STEEL - ROADWAY	LB	1648	\$	\$
29	0425-1351	INLETS, CURB TYPE P5	EA	12	\$	\$
30	0425-1361	INLETS, CURB TYPE P6	EA	1	\$	\$
31	0425-1521	INLETS, DBI TYPE C	EA	2	\$	\$
32	0425-1541	INLETS, DBI TYPE D	EA	1	\$	\$
33	0425-1551	INLETS, DBI TYPE E	EA	1	\$	\$
34	0425-1701	INLETS, GUTTER TYPE S	EA	3	\$	\$
35	430-175-118	PIPE CULVERT, 18"	LF	2732	\$	\$
36	430-175-124	PIPE CULVERT, 24"	LF	906	\$	\$
37	430-185-154	PIPE CULVERT, OPT MATL, JACK AND BORE, 54"	LF	246	\$	\$
38	430-185-172	PIPE CULVERT, OPT MATL, JACK AND BORE, 72"	LF	264	\$	\$
39	0430-830	PIPE FILLING & PLUGGING	CY	164	\$	\$
40	430-982-125	MITERED END SECTION, 18"	EA	2	\$	\$
41	430-982-129	MITERED END SECTION, 24"	EA	1	\$	\$
42	455-133-2	SHEET PILING STEEL, TEMPORARY-CRITICAL	SF	8917	\$	\$
43	0520-1-10	CURB AND GUTTER, TYPE F	LF	3746	\$	\$
44	0520-2-5	CURB, SPECIAL (RIBBON CURB)	LF	240	\$	\$
45	0520-6	SHOULDER GUTTER	LF	1010	\$	\$
46	0522-2	6" CONCRETE - DRIVEWAY	SY	218	\$	\$

BID TABULATION FOR FOY SHAW PARKWAY - FPN 425617-2-94-01 (Continued)						
Item No.	Pay Item No.	Description	UNIT	ESTIMATED QUANTITY	BID UNIT PRICE	BID PRICE
47	0524-1-2	CONC. DITCH PAVEMENT, NON REINFORCED, 4"	SY	1825	\$	\$
48	0530-3-4	RIPRAP - DITCH LINING	TN	118.6	\$	\$
49	0550-10-232	TYPE B FENCING	LF	3579	\$	\$
50	0550-60-213	TYPE B FENCING GATE	EA	2	\$	\$
51	0570-1-1	PERFORMANCE TURF	SY	39264	\$	\$
52	0570-1-2	PERFORMANCE TURF, SOD	SY	19092	\$	\$
53	0571-1-13	PLASTIC EROSION MAT, TYPE 3	SY	15359	\$	\$
54	0700-1-11	SINGLE POST SIGN (UP TO 12 SF)	EA	5	\$	\$
55	0700-1-60	SINGLE POST SIGN (REMOVAL)	EA	2	\$	\$
56	0705-10-1	OBJECT MARKER, TYPE I	EA	3	\$	\$
57	0706-3	REFLECTIVE PAVEMENT MARKERS	EA	352	\$	\$
58	0710-90	PAINTED PAVEMENT MARKINGS - FINAL SURFACE	LS	1	\$	\$
59	0711-11-125	24" WHITE THERMO PLASTIC STRIPING	LF	86	\$	\$
60	0711-11-141	6" WHITE THERMO 2-4 SKIP	GM	0.061	\$	\$
61	0711-11-170	THERMO STANDARD WHITE ARROW	EA	12	\$	\$
62	0711-14-160	THERMO STANDARD WHITE MESSAGE	EA	2	\$	\$
63	0711-14-170	THERMO PREFORMED ARROW (BIKE THROUGH ARROW)	EA	2	\$	\$
64	0711-16-101	6" WHITE THERMO PLASTIC STRIPING	GM	1.973	\$	\$
65	0711-16-201	6" YELLOW THERMO PLASTIC STRIPING	GM	2.000	\$	\$
SUM OF ITEMS 1 - 65 = TOTAL BID AMOUNT					\$	



OKALOOSA COUNTY, FLORIDA

FOY SHAW PARKWAY FROM US 90 TO JOHN GIVENS ROAD FINANCIAL PROJECT ID 425617-2-94-01

COMPONENTS OF CONTRACT PLANS SET ROADWAY PLANS

A DETAILED INDEX APPEARS ON THE
KEY SHEET OF EACH COMPONENT

INDEX OF ROADWAY PLANS

SHEET NO.	SHEET DESCRIPTION
1	KEY SHEET
2	SUMMARY OF PAY ITEMS
3-11	SUMMARY OF QUANTITIES
12	OPTIONAL MATERIALS TABULATION
13-15	DRAINAGE MAP
16-18	TYPICAL SECTIONS
19	TYPICAL SECTION DETAILS
20	PROJECT LAYOUT
21	PROJECT NOTES
22-28	ROADWAY PLAN
29-35	ROADWAY PROFILE
36	SIDE STREET PROFILES
37	DRIVEWAY PROFILES
38-40	INTERSECTION LAYOUT/DETAIL
41-56	DRAINAGE STRUCTURES
57-67	POND DETAILS
68-138	CROSS SECTIONS
139-140	STORMWATER POLLUTION PREVENTION PLAN
141-148	EROSION CONTROL PLAN
149-152	WETLAND DELINEATION SHEETS
153-155	TRAFFIC CONTROL PLANS
156-158	UTILITY ADJUSTMENT SHEETS
159	PROJECT CONTROL SHEET
160-164	SIGNING AND PAVEMENT MARKING PLAN
165	GUIDESIGN WORKSHEET

GOVERNING DESIGN STANDARDS:

Florida Department of Transportation, FY2019-20 Standard Plans for Road and Bridge Construction and applicable interim revisions (IRs)

Standard Plans for Road and Bridge Construction and associated IRs are available at the following website: <http://www.fdot.gov/design/standardplans>

APPLICABLE IRs:

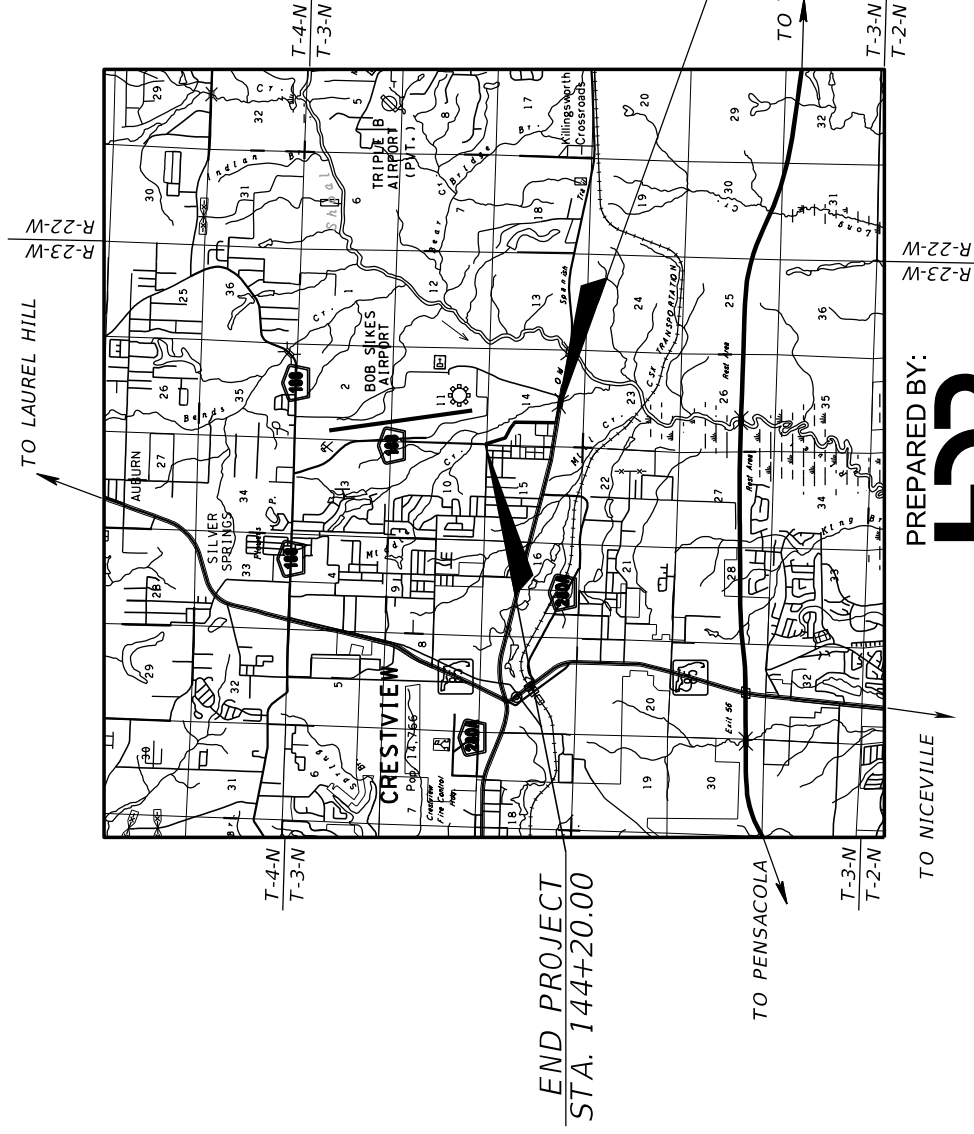
GOVERNING STANDARD SPECIFICATIONS:

Florida Department of Transportation, January 2019 Standard Specifications for Road and Bridge Construction at the following website: <http://www.fdot.gov/programmanagement/Implemented/SpecBooks>

REVISIONS

ROADWAY PLANS: 2, 4, 7, 47, 154 AND 155 (REVISED 8/22/19)

Addendum No. 2



PREPARED BY:
HDR

HDR Engineering, Inc.

25 West Cedar Street, Suite 200

Pensacola, Florida 32502

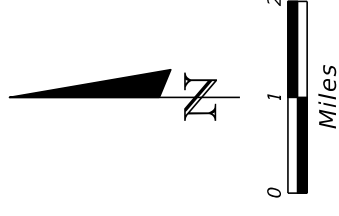
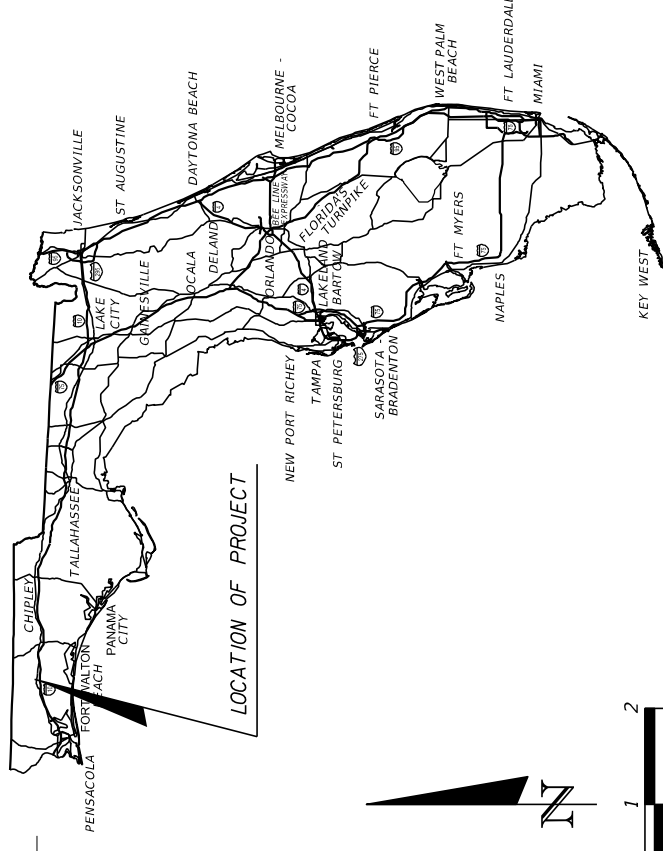
(850) 432-6800

www.hdrinc.com

Certificate of Authorization No. 4213

PROJECT LENGTH IS BASED ON \bar{C} OF CONSTRUCTION

LENGTH OF PROJECT	
	MILES
ROADWAY	0.819
BRIDGES	0.819
NET LENGTH OF PROJECT	0.819
EXCEPTIONS	
GROSS LENGTH OF PROJECT	0.819



COMMISSIONERS

GRAHAM FOUNTAIN
CAROLYN KETCHEL
NATHAN BOYLES
TREY GOODWIN
KELLY WINDES

DISTRICT ONE
DISTRICT TWO
DISTRICT THREE
DISTRICT FOUR
DISTRICT FIVE

COUNTY ADMINISTRATOR

JOHN HOFSTAD

PUBLIC WORKS DIRECTOR:

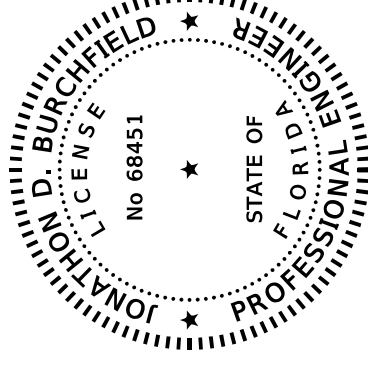
JASON AUTREY, P.E.

ENGINEER OF RECORD:

JONATHON BURCHFIELD, P.E.

68451

THIS ITEM HAS BEEN DIGITALLY
SIGNED AND SEALED BY



ON THE DATE ADJACENT TO THE SEAL

PRINTED COPIES OF THIS DOCUMENT ARE
NOT CONSIDERED SIGNED AND SEALED
AND THE SIGNATURE MUST BE VERIFIED
ON ANY ELECTRONIC COPIES.


SHEET
NO.

OKALOOSA COUNTY PROJECT MANAGER: SCOTT BITTERMAN P.E.

SUMMARY OF PAY ITEMS

NOTICE: THE OFFICIAL RECORD OF THIS SHEET IS THE ELECTRONIC FILE SIGNED AND SEALED UNDER RULE 61G15-23.003, F.A.C.

PAY ITEM NO.	DESCRIPTION	UNIT	TOTAL	PAY ITEM NO.	DESCRIPTION	UNIT	TOTAL
0101- 1-	MOBILIZATION	LS	1	0711- 14-170	THERMOPLASTIC PAVEMENT MARKINGS, PERFORMED, ARROWS (BIKE THRU ARROW)	EA	2
0102- 1-	MAINTENANCE OR REPAIRS	EA	1	0711- 16-101	THERMOPLASTIC PAVEMENT MARKINGS, WHITE, SOLID, 6"	GM	1.973
0102- 60-	CONCRETE MATERIAL FOR DRIVEWAY MAINTENANCE	EA	1	0711- 16-201	THERMOPLASTIC PAVEMENT MARKINGS, YELLOW, SOLID, 6"	GM	2.000
0102- 74- 1	WORK ZONE SIGN	ED	11070	0999- 25	INITIAL CONTINGENCY AMOUNT, DO NOT BID	LS	1
0102- 74- 2	CHANNELIZING DEVICE- TYPES I, II, DI, VP, DRUM, OR LCD	ED	4050				
0102- 99-	PORTABLE CHANGEABLE MESSAGE SIGN, TEMPORARY	ED	3240				
0102-911- 2	PAVEMENT MARKING REMOVABLE TAPE, WHITE/BLACK, SOLID	LF	620				
0102-912- 2	PAVEMENT MARKING REMOVABLE TAPE, YELLOW, SOLID	LF	460				
0104- 1-	ARTIFICIAL COVERINGS/ROLLED EROSION CONTROL PRODUCTS	SY	58356				
0104- 10- 3	SEDIMENT BARRIER	LF	12178				
0104- 12-	STAKED TURBIDITY BARRIER- NYLON REINFORCED PVC	LF	3159				
0104- 15-	SOIL TRACKING PREVENTION DEVICE	EA	4				
0104- 18-	INLET PROTECTION SYSTEM	EA	25				
0110- 1- 1	CLEARING & GRUBBING	LS/AC	1/17.59				
0110- 4-	REMOVAL OF EXISTING CONCRETE PAVEMENT	SY	386				
0120- 1-	REGULAR EXCAVATION	CY	49296				
0120- 4-	SUBSOIL EXCAVATION	CY	4450				
0120- 6-	EMBANKMENT	CY	136151				
0160- 4-	TYPE B STABILIZATION	SY	20268				
0162- 1- 11	PREPARED SOIL LAYER, FINISH SOIL, 6"	SY	58356				
0285-701-	OPTIONAL BASE, BASE GROUP 01	SY	4366				
0285-706-	OPTIONAL BASE, BASE GROUP 06	SY	15064				
0334- 1- 12	SUPERPAVE ASPH CONC, TRAFFIC B, PG76-22, PMA	TN	1996.2				
0337- 1- 80	ASPHALT CONCRETE FRICTION COURSE, TRAFFIC B, FC-9.5, PG 76-22, PMA	TN	988.5				
0400- 1- 2	CONCRETE CLASS I, ENDWALLS	CY	20.9				
0400- 2- 2	CONCRETE CLASS II, ENDWALLS	CY	27.4				
0415- 1- 6	REINFORCING STEEL- MISCELLANEOUS	LB	1648				
0425- 1-351	INLETS, CURB, TYPE P-5, <10'	EA	12				
0425- 1-361	INLETS, CURB, TYPE P-6, <10'	EA	1				
0425- 1-521	INLETS, DT BOT, TYPE C, <10'	EA	2				
0425- 1-541	INLETS, DT BOT, TYPE D, <10'	EA	1				
0425- 1-551	INLETS, DT BOT, TYPE E, <10'	EA	1				
0425- 1-701	INLETS, GUTTER, TYPE S	EA	3				
0430-175-118	PIPE CULVERT, OPT MATERIAL, ROUND, 18"S/CD	LF	2732				
0430-175-124	PIPE CULVERT, OPT MATERIAL, ROUND, 24"S/CD	LF	906				
0430-185-154	PIPE CULVERT, OPT MATERIAL, JACK AND BORE, 54", STORM AND CROSS DRAIN	LF	246				
0430-185-172	PIPE CULVERT, OPT MATERIAL, JACK AND BORE, 72", STORM AND CROSS DRAIN	LF	264				
430-830	PIPE FILLING & PLUGGING	CY	164				
0430-982-125	MITERED END SECTION, OPTIONAL ROUND, 18" CD	EA	2				
0430-982-129	MITERED END SECTION, OPTIONAL ROUND, 24" CD	EA	1				
0455-133-2	SHEET PILING STEEL, TEMPORARY-CRITICAL	SF	8917				
0520- 1- 10	CONCRETE CURB & GUTTER, TYPE F	LF	3746				
0520- 2- 5	CONCRETE CURB, SPECIAL (RIBBON CURB)	LF	240				
0520- 6	SHOULDER GUTTER - CONCRETE	LF	1010				
0522- 2	CONCRETE SIDEWALK AND DRIVEWAYS, 6" THICK	SY	218				
0524- 1- 2	CONCRETE DITCH PAVEMENT - NON REINFORCED, 4"	SY	1825				
0530- 3- 4	RIPRAP, RUBBLE, F&I, DITCH LINING	TN	118.6				
0550-10-232	FENCING, TYPE B, VINYL COATING	LF	3579				
0550-60-213	FENCE GATE, TYPE B	EA	2				
0570- 1- 1	PERFORMANCE TURF	SY	39264				
0570- 1- 2	PERFORMANCE TURF, SOD	SY	19092				
0571- 1- 13	PLASTIC EROSION MAT, TYPE 3	SY	15359				
0700- 1- 11	SINGLE POST SIGN, F&I GROUND MOUNT, UP TO 12 SF	EA	5				
0700- 1- 60	SINGLE POST SIGN, REMOVE	EA	2				
0705- 10- 1	OBJECT MARKER, TYPE I	EA	3				
0706- 3-	RETRO-REFLECTIVE PAVEMENT MARKERS	EA	352				
0710- 90	PAINTED PAVEMENT MARKINGS - FINAL SURFACE	LS	1				
0711- 11-125	THERMOPLASTIC PAVEMENT MARKINGS, WHITE, SOLID, 24"	LF	86				
0711-11-141	THERMOPLASTIC PAVEMENT MARKINGS, WHITE, SKIP, 6"	GM	0.061				
0711-11-170	THERMOPLASTIC PAVEMENT MARKINGS, WHITE, ARROW	EA	12				
0711-14-160	THERMOPLASTIC PAVEMENT MARKINGS, WHITE, MESSAGE	EA	2				

DATE	DESCRIPTION	DATE	DESCRIPTION
8/22/19	UPDATED QUANTITIES		
Addendum No. 2			
REVISIONS			
			
Jonathon D. Burchfield, P.E. P.E. LICENSE NUMBER 68451 HDR Engineering, Inc. 25 West Cedar Street, Suite 200 Pensacola, FL 32502-5945 CERTIFICATE OF AUTHORIZATION 4213			
SUMMARY OF PAY ITEMS			SHEET NO.
OKALOOSA COUNTY			2

SUMMARY OF DRAINAGE ITEMS

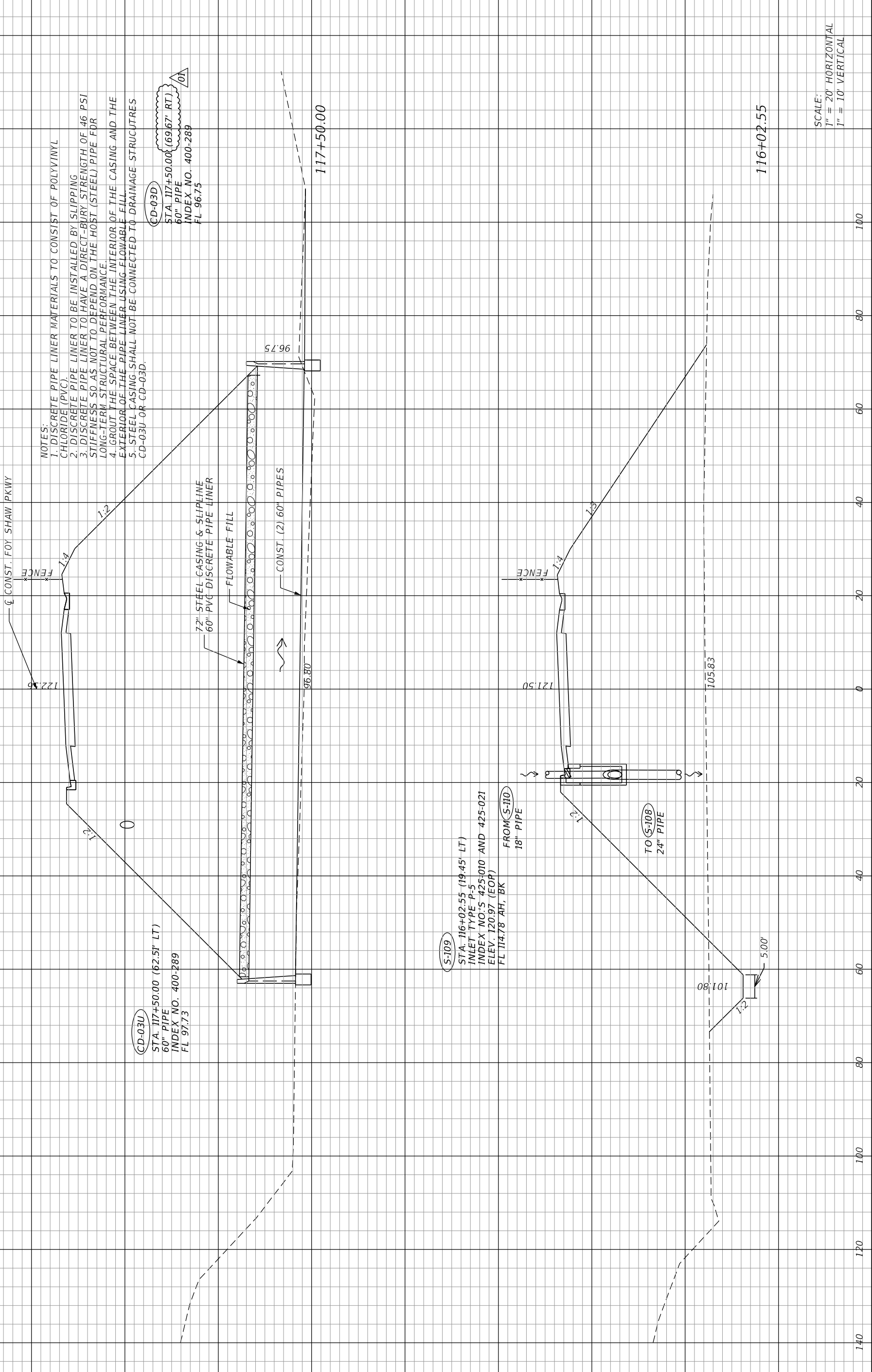
PAY ITEM NO.	PAY ITEM DESCRIPTION	LOCATION STA. TO STA.	SIDE	UNIT	QUANTITY		TOTAL		DESIGN NOTES	CONSTRUCTION REMARKS
					P	F	P	F		
0430 175 118	PIPE CULVERT, OPT. MATERIAL, ROUND, 18" S/CD	104+17.79 TO 105+28.25	LT	LF	112				CL CONST. FOY SHAW PKWY	
		105+30.00 TO 105+30.00		LF	23				CL CONST. FOY SHAW PKWY	
		105+31.75 TO 108+18.25	RT	LF	287				CL CONST. FOY SHAW PKWY	
		108+20.00 TO 108+20.00		LF	23				CL CONST. FOY SHAW PKWY	
		108+21.75 TO 110+48.25	RT	LF	228				CL CONST. FOY SHAW PKWY	
		110+51.75 TO 112+96.50	RT	LF	245				CL CONST. FOY SHAW PKWY	
		112+51.21 TO 112+97.53		LF	73				CL CONST. FOY SHAW PKWY	
		113+02.47 TO 113+37.57	RT	LF	60				CL CONST. FOY SHAW PKWY	
		116+05.10 TO 119+11.22	LT	LF	299				CL CONST. FOY SHAW PKWY	
		119+14.78 TO 122+21.22	LT	LF	300				CL CONST. FOY SHAW PKWY	
		122+24.78 TO 125+25.25	LT	LF	300				CL CONST. FOY SHAW PKWY	
		125+28.75 TO 128+28.25	LT	LF	300				CL CONST. FOY SHAW PKWY	
		128+31.75 TO 128+98.25	LT	LF	67				CL CONST. FOY SHAW PKWY	
		129+01.75 TO 131+98.25	LT	LF	298				CL CONST. FOY SHAW PKWY	
		135+06.12 TO 135+98.38	RT	LF	117				CL CONST. FOY SHAW PKWY	
							2732			
0430 175 124	PIPE CULVERT, OPT. MATERIAL, ROUND, 24" S/CD	536+10.33 TO 539+06.01	RT	LF	296				BASE LINE SURVEY US 90	
		539+09.51 TO 541+53.27	RT	LF	244				BASE LINE SURVEY US 91	
		541+56.77 TO 542+49.01	RT	LF	93				BASE LINE SURVEY US 92	
		111+50.00 TO 111+50.00		LF	129				CL CONST. FOY SHAW PKWY	
		114+86.33 TO 115+23.10	RT	LF	61					
		115+25.37 TO 116+00.00		LF	83					
							906			
0430 185 154	PIPE CULVERT, JACK&BORE, 54", S/CD	130+00.00		LF	246				SEE PAY ITEM NOTE	
							246		JACK AND BORE NOT REQUIRED	
0430 185 172	PIPE CULVERT, JACK&BORE, 72", S/CD	117+50.00		LF	264	01			SEE PAY ITEM NOTE	
							264	01	JACK AND BORE NOT REQUIRED	
0430-830	PIPE FILLING & PLUGGING	117+50.00		CY	106				CL CONST. FOY SHAW PKWY	
		130+00.00		CY	58				CL CONST. FOY SHAW PKWY	
							164			
0430 982 125	MITERED END SECTION, OPT. ROUND, 18"	113+39.48	RT	EA	1				CL CONST. FOY SHAW PKWY	
		135+02.86	RT	EA	1				CL CONST. FOY SHAW PKWY	
							2			
0430 982 129	MITERED END SECTION, OPT. ROUND, 24"	113+39.48	RT	EA	1				CL CONST. FOY SHAW PKWY	
							1			

NOTICE: THE OFFICIAL RECORD OF THIS SHEET IS THE ELECTRONIC FILE SIGNED AND SEALED UNDER RULE 61G15-23.003, F.A.C.

DATE 8/22/19	DESCRIPTION UPDATED QUANTITIES	REVISIONS DATE DESCRIPTION	Jonathon D. Burchfield, P.E. P.E. LICENSE NUMBER 68451 HDR Engineering, Inc. 25 West Cedar Street, Suite 200 Pensacola, FL 32502-5945 CERTIFICATE OF AUTHORIZATION 4213	 OKALOOSA COUNTY	SUMMARY OF QUANTITIES	SHEET NO.
						7

DATE	DESCRIPTION	REVISIONS
8/22/19	UPDATED STRUCTURE OFFSET	
	Addendum No. 2	

8/23/2019 9:10:19 AM PW:\JBURCHF1



<p>OKALOOSA COUNTY FPID: 425617-2-94-01</p>		SHEET NO. 47
Jonathon D. Burchfield, P.E. P.E. LICENSE NUMBER 68451 HDR Engineering, Inc. 25 West Cedar Street, Suite 200 Pensacola, FL 32502-5945 CERTIFICATE OF AUTHORIZATION 4213		
DATE 8/22/19	DESCRIPTION UPDATED STRUCTURE OFFSET Addendum No. 2	REVISIONS DATE DESCRIPTION