

ADDENDUM 1

ITQ TDD 33-18

CONCRETE STAIR REPAIR SERVICES FOR THE EMERALD COAST
CONFERENCE CENTER

Date of Issue: April 12, 2018

Quote Submittal Deadline: The Bid date and submission time has NOT CHANGED.

This addendum will address the following questions and include four (4) additional drawing details.

1. What is the concrete psi?

5,000 psi

2. Can you tell me how wide the steps over all are and if the riser is turned down at 90 degrees?

Steps are 14'- 4" wide and the Riser is turned down at 90 degrees.



Okaloosa County
Conference / Civic Center
Okaloosa Island
Okaloosa County, Florida

Spillis Candela DMJM
ARCHITECT OF RECORD
1560 ORANGE AVE., STE. 100
WINTER PARK, FL 32789
Tel: (407) 644-3644 • Fax: (407) 644-6197
Florida License AA0003298

Blinn Van Mater, Architect
ASSOCIATE ARCHITECT
201 MIRACLE STRIP PARKWAY S.E. SUITE C
FORT WALTON BEACH, FL 32548
TEL: (850) 243-9244 • FAX: (850) 243-9298

Spillis Candela DMJM
STRUCTURAL, MECHANICAL, ELECTRICAL,
PLUMBING, FIRE PROTECTION ENGINEERS,
AND INTERIOR DESIGNERS
800 DOUGLAS ENTRANCE, SUITE 200
CORAL GABLES, FLORIDA 33134 - 3119
TEL: (305) 444-6691 • FAX: (305) 447-3558

Choctaw Engineering, Inc.
CIVIL ENGINEER
112 BRUXTON AVENUE
FORT WALTON BEACH, FL 32547
TEL: (850) 862-6611 • FAX: (850) 863-8059

William H. Smith
and Associates, Inc.
LANDSCAPE ARCHITECT
3 HOLLY AVENUE
SHALMAR, FLORIDA 32579
TEL: (850) 651-6058 • FAX: (850) 651-3798

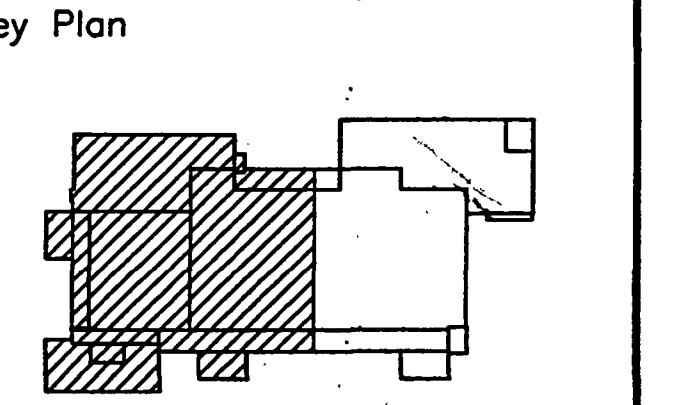
Cosentini Associates, Inc.
TELECOMMUNICATIONS CONSULTANTS
200 SOUTH ORANGE AVENUE
ORLANDO, FL 32801
TEL: (407) 999-8990 • FAX: (407) 999-7817

General Hotel and Restaurant
Supply Corporation
KITCHEN + FOOD SERVICE CONSULTANTS
7300 NW 77th STREET
MIAMI, FL 33166-2289
TEL: (305) 885-8651 • FAX: (305) 883-4919

Francis Daniel Consulting
Alliance, Inc.
AUDIO VISUAL + ACoustical CONSULTANTS
400 NORTH FLAGLER DRIVE, SUITE 1201
WEST PALM BEACH, FLORIDA 33401-4315
TEL: (561) 833-8632 • FAX: (561) 835-8843

Rolf Jensen and Associates, Inc.
LIFE SAFETY CODE CONSULTANTS
3504 LAKE LINDA DRIVE, SUITE 110
ORLANDO, FL 32817
TEL: (407) 381-7771 • FAX: (407) 381-5551

Construction Moisture
Consulting, Inc.
WATER PROOFING CONSULTANTS
3914 HWY. 301 NORTH, STE. 200
TAMPA, FL 33618-1233
TEL: (813) 623-2323 • FAX: (813) 626-2637



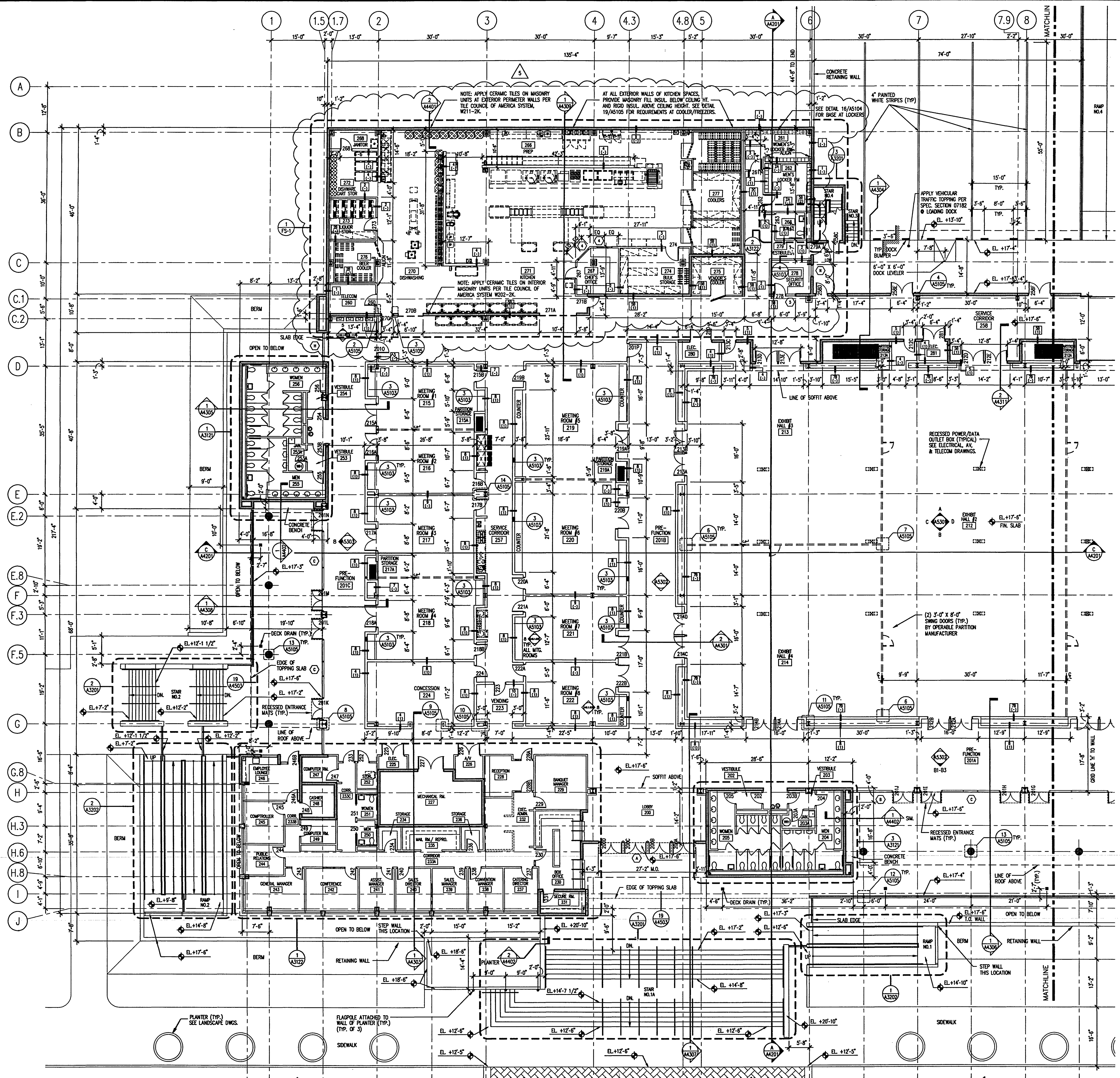
Sheet Title:
**PARTIAL
EXHIBIT LEVEL PLAN**

Project No:	032112001
ISSUE	DATE
Permit Set	April 16, 2001
For construction	August 17, 2001
Bulletin No. 5	Feb. 20, 2002

Drawing No:
A2.2.21

Professional of Record: Richard Foley
Discipline: Architecture
Registration No. AR001679

Seal:



This drawing contains information to be used exclusively for the production of Contract Documents for this project.
The Contract Documents of record are only those in paper, when, or prior produced by Spillis Candela DMJM and they bear our professional seal and our signature. This drawing is not a Contract Document.
This drawing was created by Spillis Candela DMJM for internal use. Due to the possibility that this drawing may be modified, unintentionally or otherwise, and that the information contained herein could be used in a manner for which it was not originally intended, Spillis Candela DMJM makes no assertion that this drawing is an accurate representation of the actual field in our possession, or that it is suitable for any other purpose or use.

- GENERAL NOTES:
1. ALL ELEVATION REFERENCES ARE TO N.G.V.D. UNLESS OTHERWISE INDICATED.
 2. ALL STUCCO FINISHED SURFACES ARE TO RECEIVE ELASTOMERIC COATING PER SPECIFICATION SECTION 07155.
 3. PROVIDE R-6.3 RIGID INSULATION PER SPECIFICATION SECTION 07210 AT INSIDE FACE OF ALL EXTERIOR WALLS UNLESS OTHERWISE INDICATED.

EXHIBIT LEVEL PARTIAL PLAN
SCALE: 3/32" = 1'-0"
1

AS-BUILT



**Okaloosa County
Conference / Civic Center**
Okaloosa Island
Okaloosa County, Florida

Spillis Candela DMJM
ARCHITECT OF RECORD
1560 ORANGE AVE., STE. 100
WINTER PARK, FL 32789
Tel: (407) 644-3644 • Fax: (407) 644-6197
Florida License AA0003298

Blinn Van Mater, Architect
ASSOCIATE ARCHITECT
201 MIRACLE STRIP PARKWAY S.E. SUITE C
FORT WALTON BEACH, FL 32548
Tel: (850) 243-9244 • Fax: (850) 243-9298

Spillis Candela DMJM
STRUCTURAL, MECHANICAL, ELECTRICAL,
PLUMBING, FIRE PROTECTION ENGINEERS,
AND INTERIOR DESIGNERS
800 DOUGLAS ENTRANCE SUITE 200
CORAL GABLES, FLORIDA 33134 • 3119
Tel: (305) 444-4691 • Fax: (305) 447-3558

Choctaw Engineering, Inc.
CIVIL ENGINEER
112 TRUXTON AVENUE
FORT WALTON BEACH, FL 32547
Tel: (850) 862-6611 • Fax: (850) 863-8059

**William H. Smith
and Associates, Inc.**
LANDSCAPE ARCHITECT
3 HOLLY AVENUE
SHALIMAR, FLORIDA 32579
Tel: (850) 651-6058 • Fax: (850) 651-3798

Cosentini Associates, Inc.
TELECOMMUNICATIONS CONSULTANTS
200 SOUTH ORANGE AVENUE
ORLANDO, FL 32081
Tel: (407) 999-8990 • Fax: (407) 999-7817

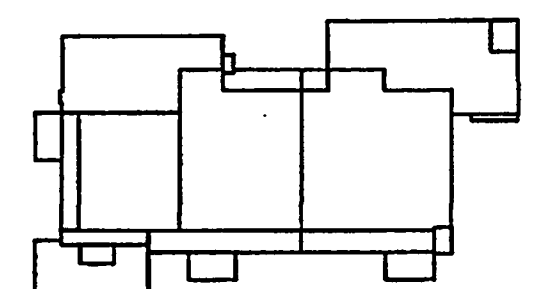
**General Hotel and Restaurant
Supply Corporation**
KITCHEN + FOOD SERVICE CONSULTANTS
7300 NW 77th STREET
MIAMI, FL 33156-2289
Tel: (305) 885-8651 • Fax: (305) 883-4919

**Francis Daniel Consulting
Alliance, Inc.**
AUDIO VISUAL + ACOUSTICAL CONSULTANTS
400 NORTH FLAGLER DRIVE SUITE 1201
WEST PALM BEACH, FLORIDA 33401-4315
Tel: (561) 833-8632 • Fax: (561) 833-8643

Rolf Jensen and Associates, Inc.
LIFE SAFETY CODE CONSULTANTS
3504 LAKE LYNDY DRIVE, SUITE 110
ORLANDO, FL 32817
Tel: (407) 381-7771 • Fax: (407) 381-5551

**Construction Moisture
Consulting, Inc.**
WATER PROOFING CONSULTANTS
3914 HWY. 301 NORTH, STE. 200
TAMPA, FL 33619-1293
Tel: (813) 623-2323 • Fax: (813) 626-2637

Key Plan



Sheet Title:

ENLARGED STAIR PLANS

Project No: 032112001

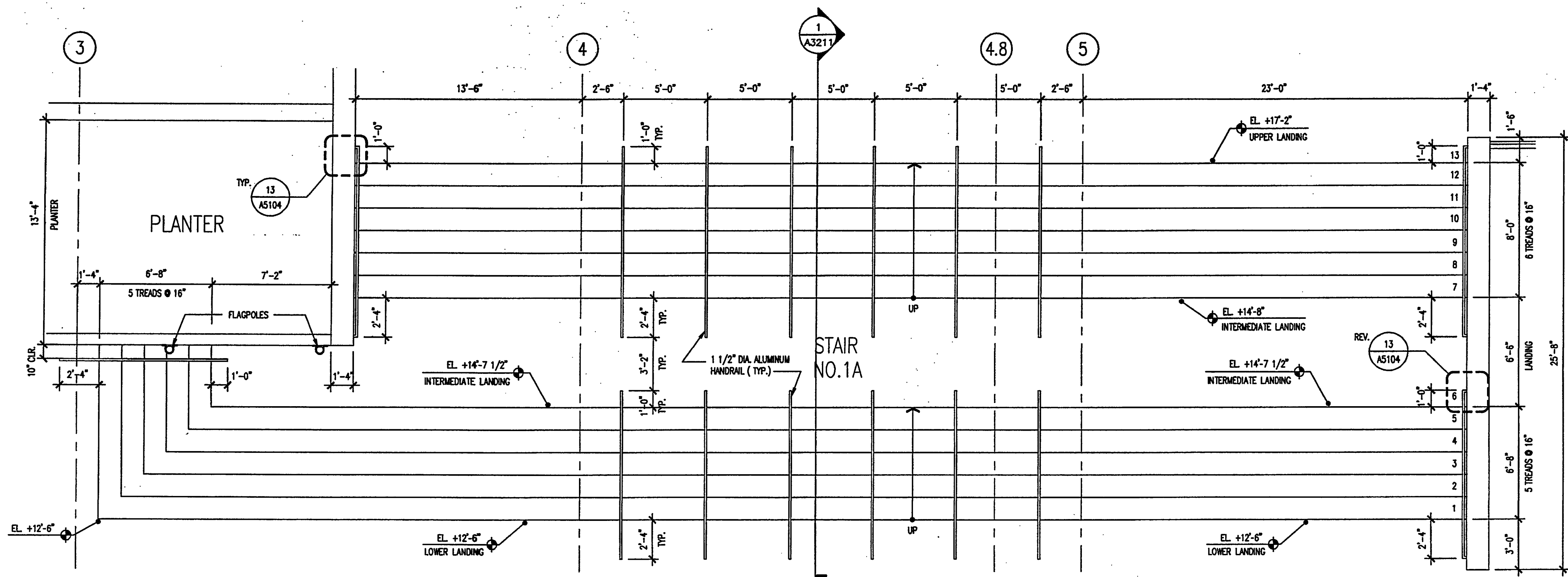
ISSUE	DATE
Permit Set	April 16, 2001
For construction	August 17, 2001

Drawing No:

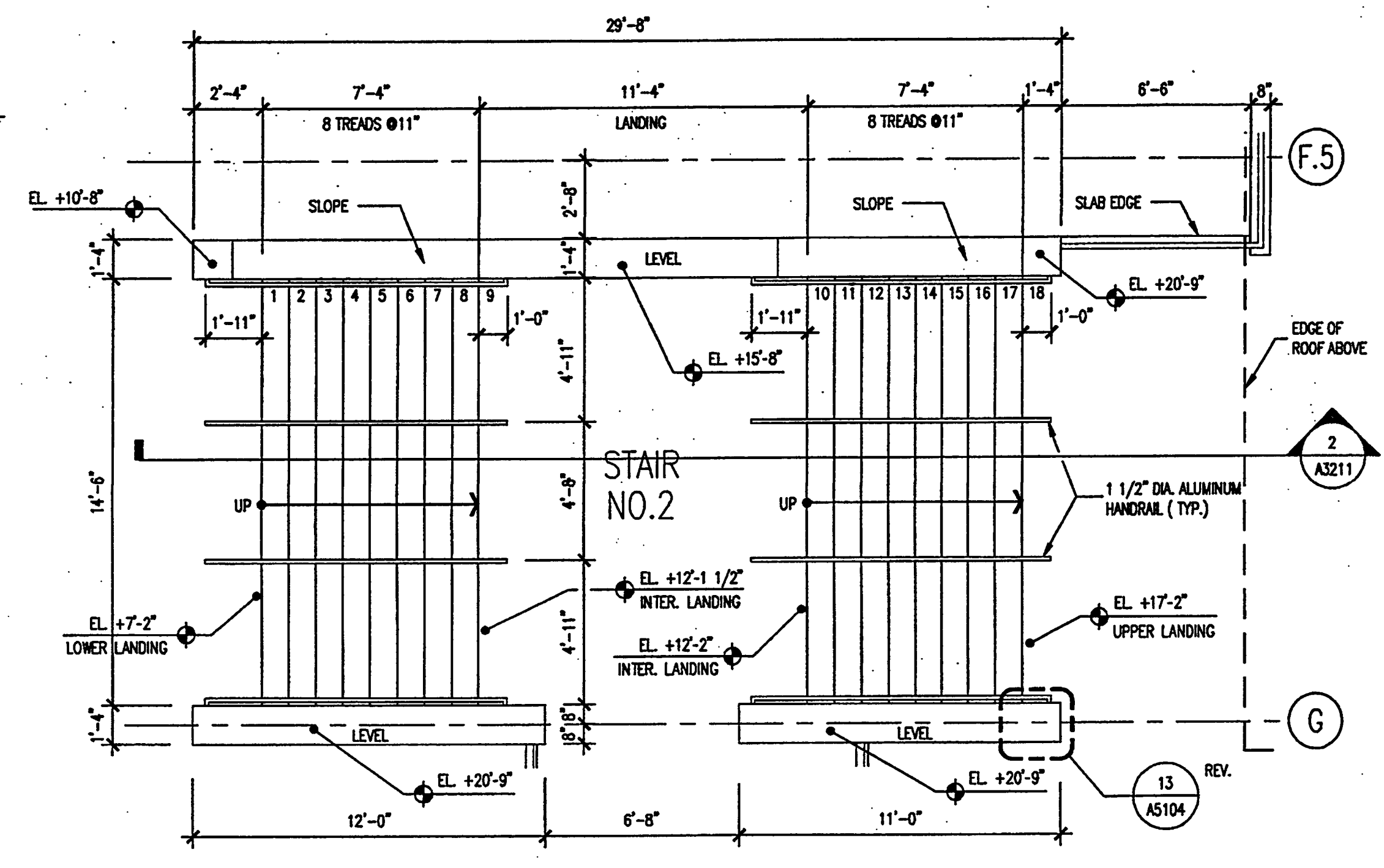
A3.2.01

Professional of Record: Richard Foley
Discipline: Architecture
Registration No. AR0011679

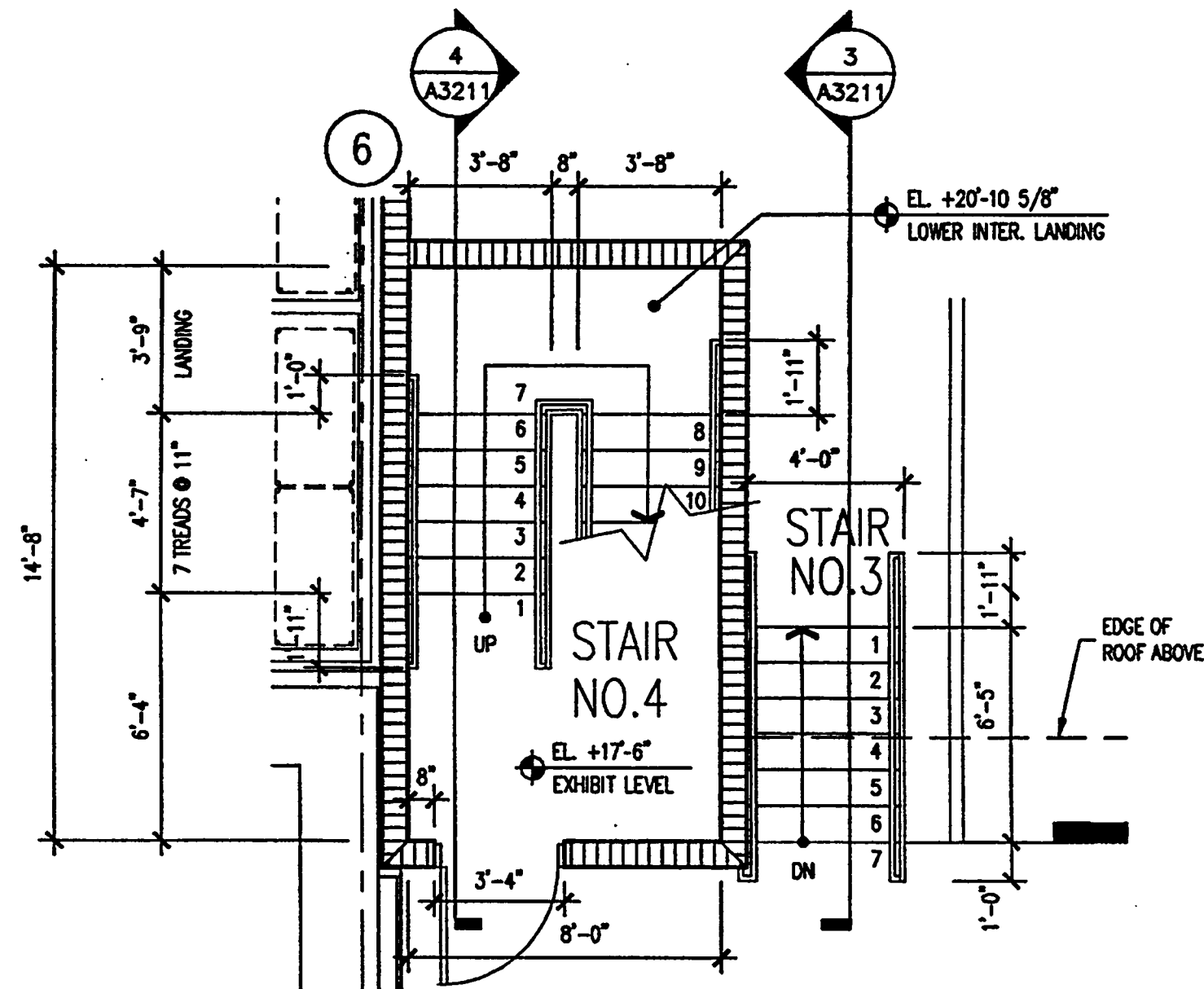
Seal:



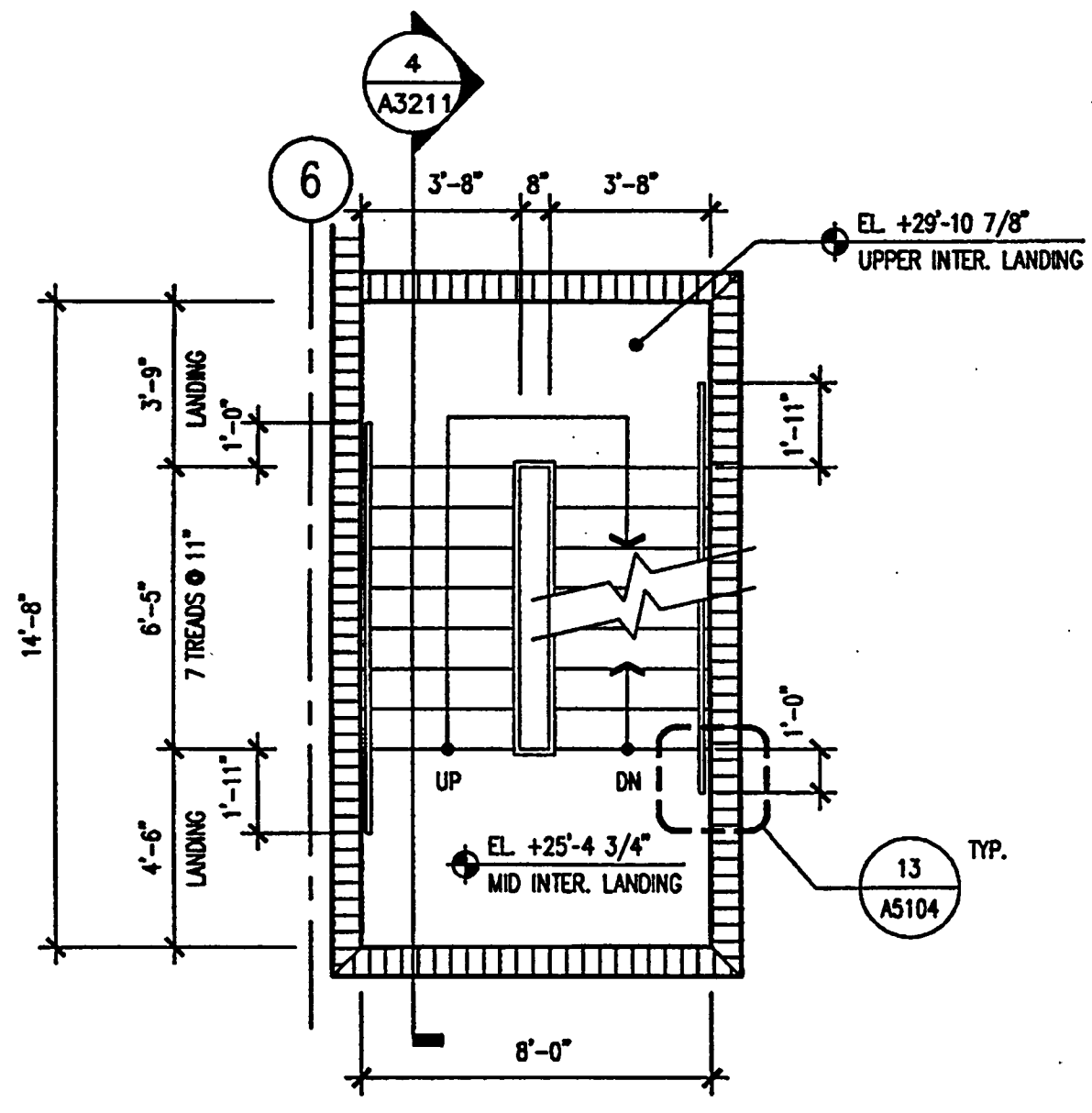
STAIR NO. 1 PLAN
SCALE: 1/4" = 1'-0"



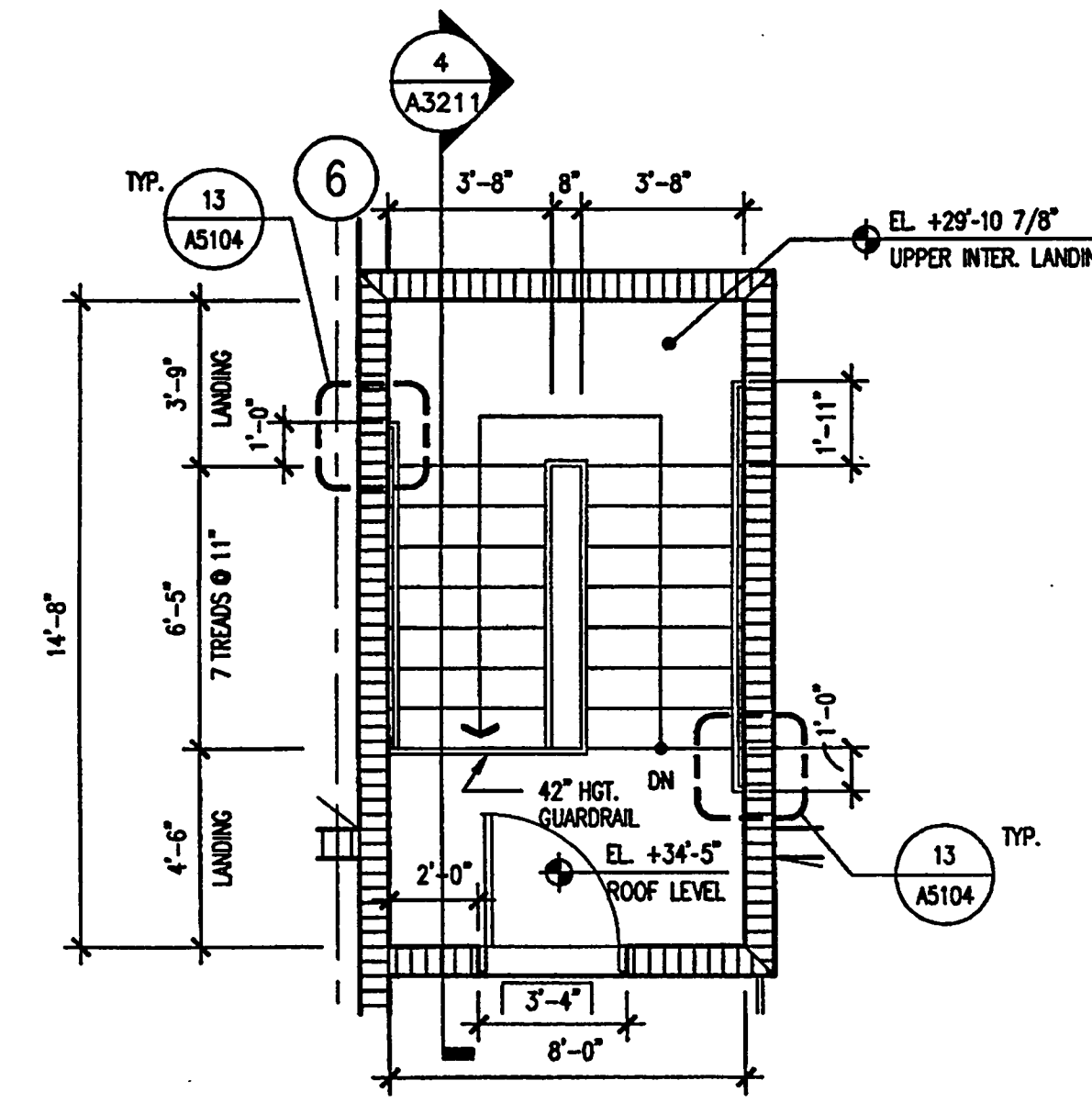
STAIR NO. 2 PLAN
SCALE: 1/4" = 1'-0"



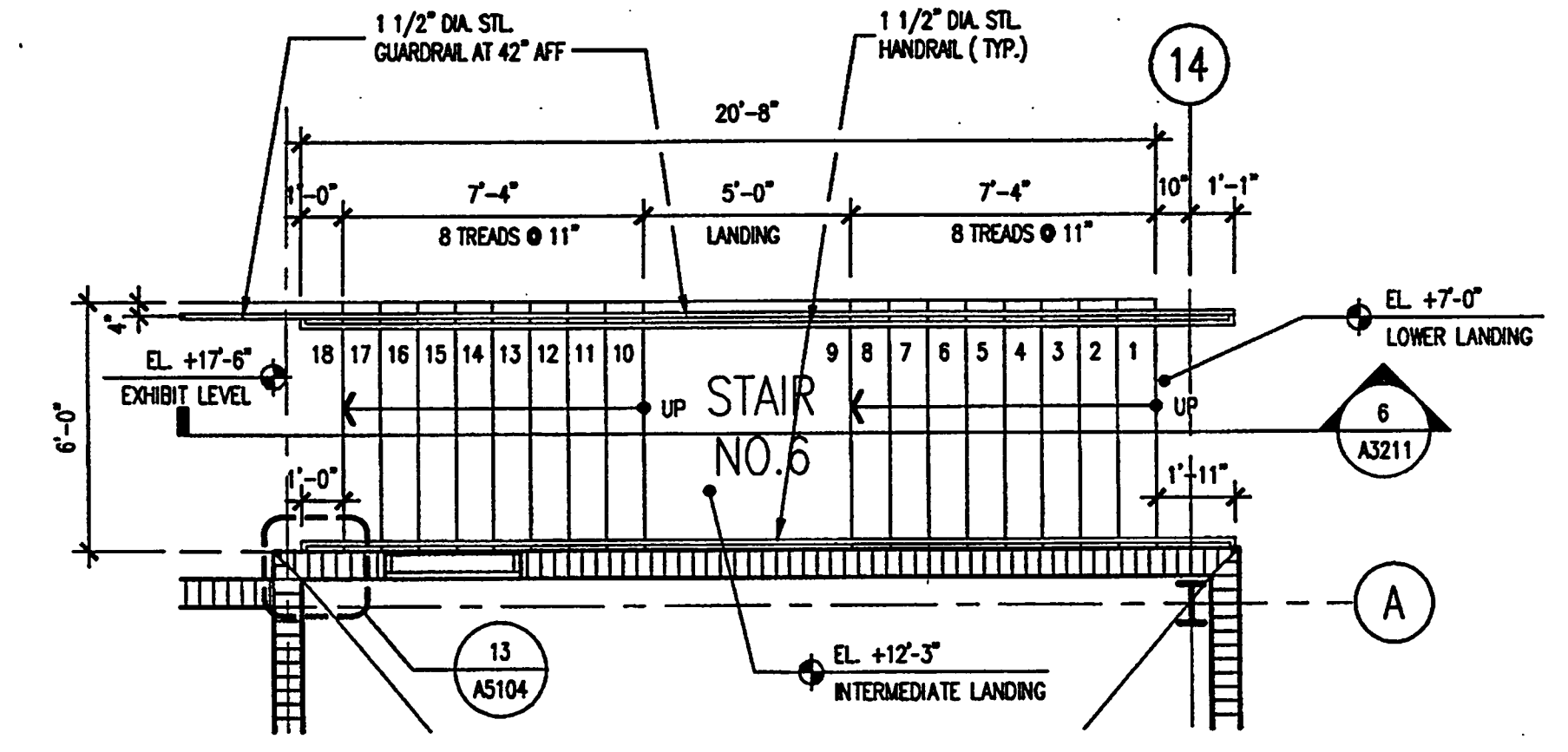
STAIR NO. 3,4 PLAN (5 SIM.)
SCALE: 1/4" = 1'-0"



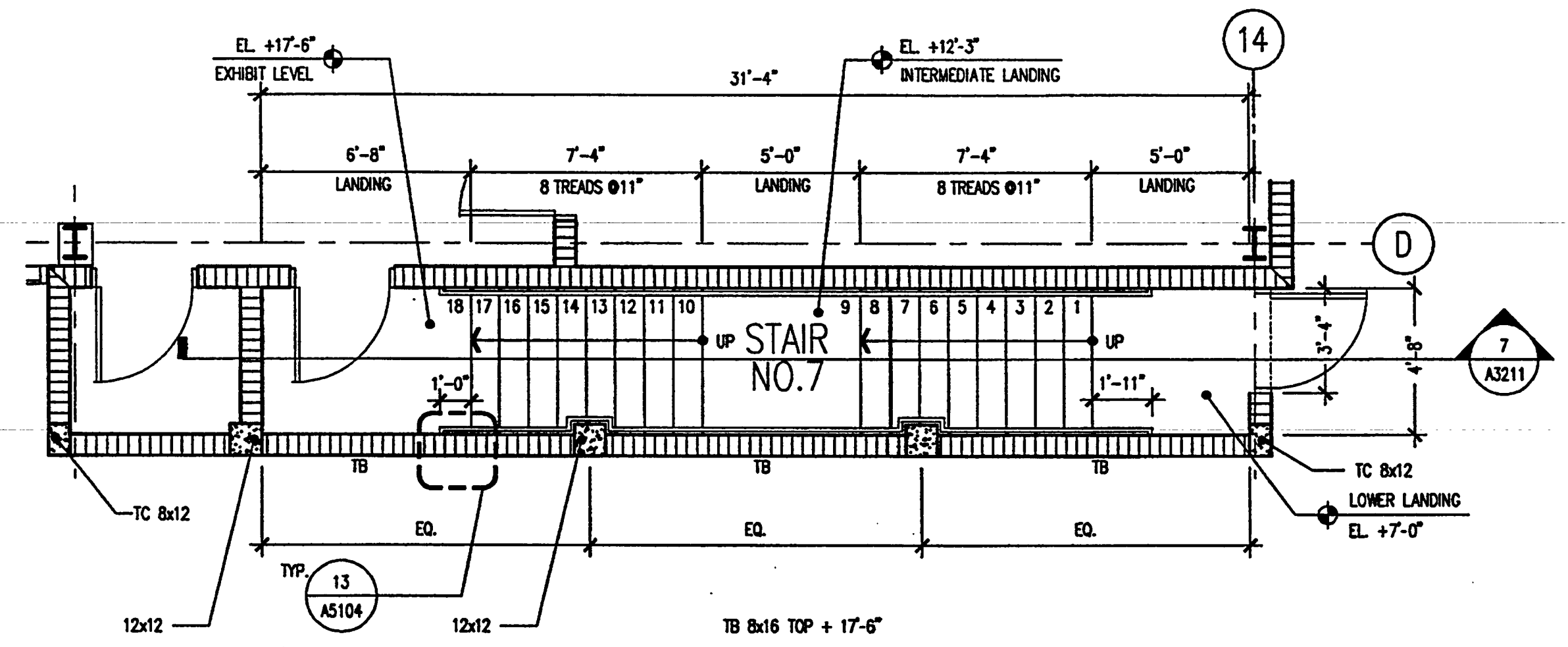
STAIR NO. 4 PLAN (5 SIM.)
SCALE: 1/4" = 1'-0"



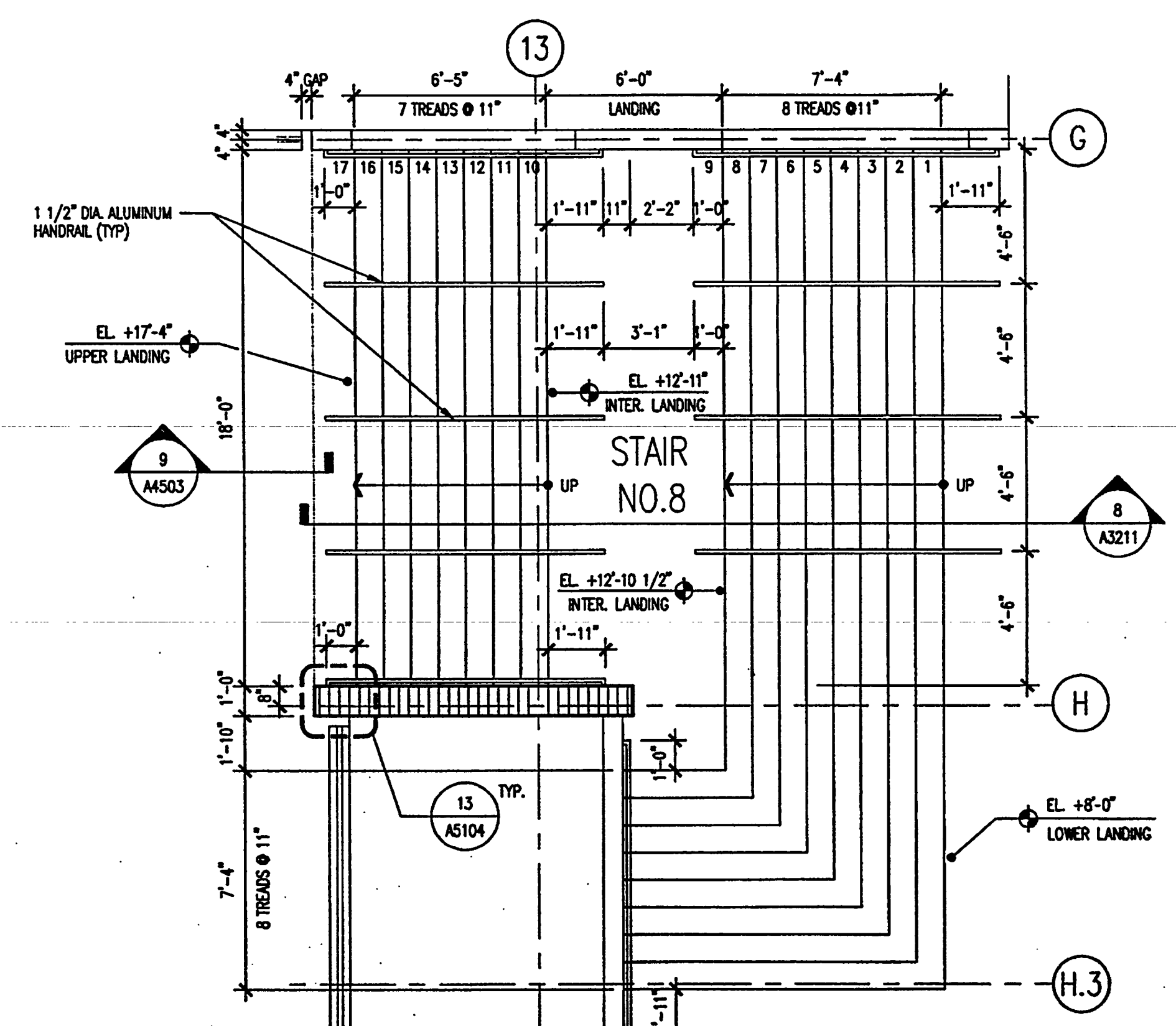
STAIR NO. 4 PLAN (5 SIM.)
SCALE: 1/4" = 1'-0"



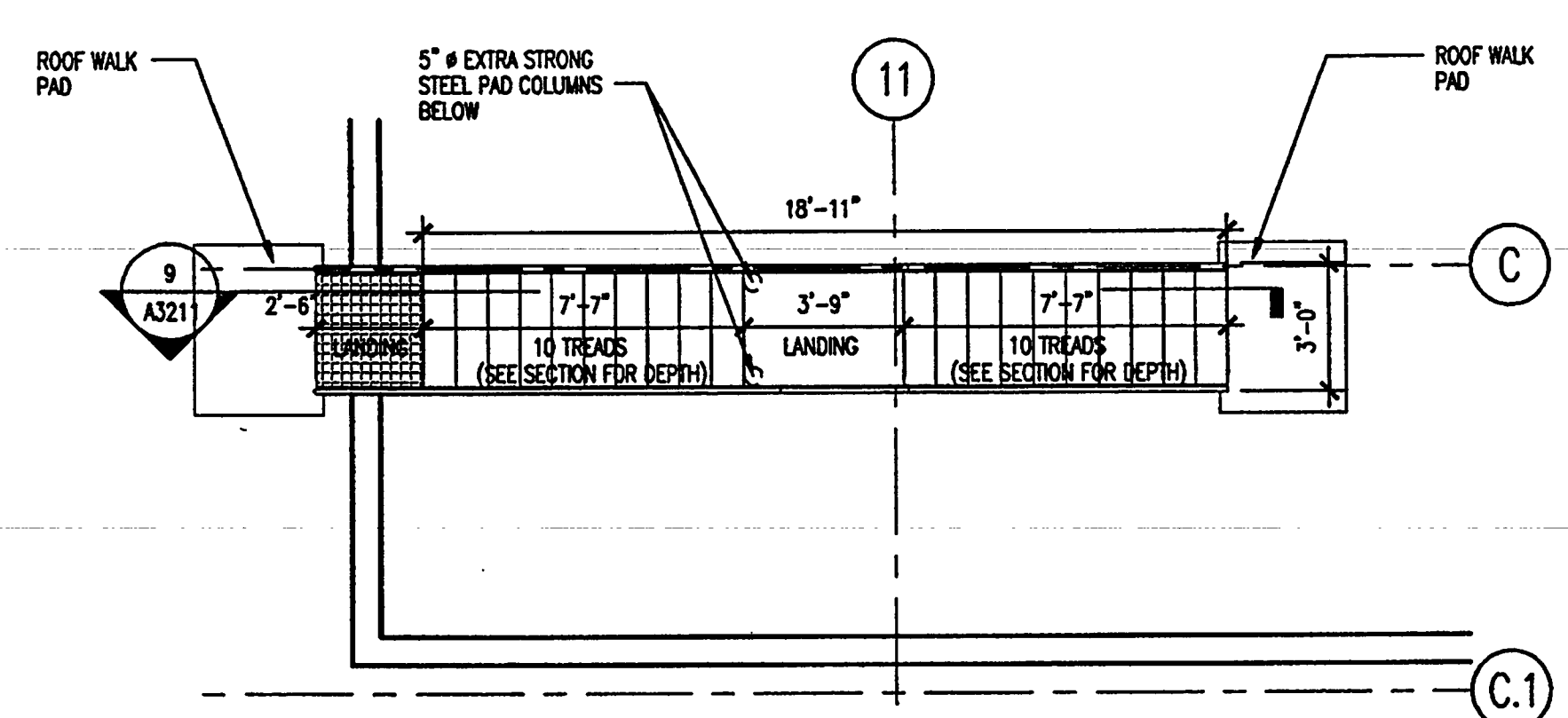
STAIR NO. 6 PLAN
SCALE: 1/4" = 1'-0"



STAIR NO. 7 PLAN
SCALE: 1/4" = 1'-0"



STAIR NO. 8 PLAN
SCALE: 1/4" = 1'-0"



SHIP'S LADDER PLAN
SCALE: 1/4" = 1'-0"

AS-BUILT



Okaloosa County
Conference / Civic Center
Okaloosa Island
Okaloosa County, Florida

Spillis Candela DMJM
ARCHITECT OF RECORD
1560 ORANGE AVE., STE. 100
WINTER PARK, FL 32789
Tel: (407) 644-3644 • Fax: (407) 644-6197
Florida License AA0003298

Blinn Van Mater, Architect
ASSOCIATE ARCHITECT
201 MIRACLE STRIP PARKWAY S.E. SUITE C
FORT WALTON BEACH, FL 32548
TEL: (850) 243-9244, FAX: (850) 243-9298

Spillis Candela DMJM
STRUCTURAL, MECHANICAL, ELECTRICAL,
PLUMBING, FIRE PROTECTION ENGINEERS,
AND INTERIOR DESIGNERS
800 DOUGLAS ENTRANCE SUITE 200
CORAL GABLES, FLORIDA 33134 - 3119
TEL: (305) 444-6911, FAX: (305) 447-3558

Choctaw Engineering, Inc.
CIVIL ENGINEER
112 TRUXTON AVENUE
FORT WALTON BEACH, FL 32547
TEL: (850) 862-6611, FAX: (850) 863-8058

William H. Smith and Associates, Inc.
LANDSCAPE ARCHITECT
3 HILLY AVENUE
SHALMAR, FLORIDA 32579
TEL: (850) 651-6058, FAX: (850) 651-3798

Cosentini Associates, Inc.
TELECOMMUNICATIONS CONSULTANTS
200 SOUTH ORANGE AVENUE
ORLANDO, FL 32081
TEL: (407) 999-8990, FAX: (407) 999-7817

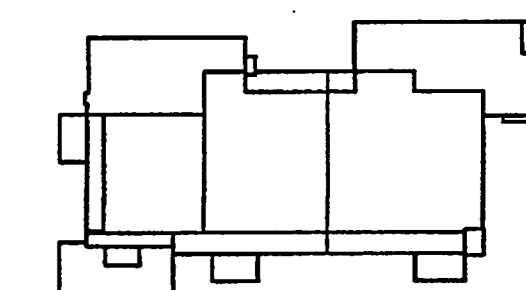
General Hotel and Restaurant Supply Corporation
KITCHEN + FOOD SERVICE CONSULTANTS
7300 NW 77th STREET
MIAMI, FL 33166-2289
TEL: (305) 885-8651, FAX: (305) 883-4919

Francis Daniel Consulting Alliance, Inc.
AUDIO VISUAL + ACoustICAL CONSULTANTS
400 NORTH FLAGLER DRIVE SUITE 1201
WEST PALM BEACH, FLORIDA 33401-4315
TEL: (561) 833-8632, FAX: (561) 835-8843

Rolf Jensen and Associates, Inc.
LIFE SAFETY CODE CONSULTANTS
3504 LAKE LYDIA DRIVE SUITE 110
ORLANDO, FL 32817
TEL: (407) 381-7771, FAX: (407) 381-5551

Construction Moisture Consulting, Inc.
WATER PROOFING CONSULTANTS
3914 HWY. 301 NORTH, STE. 200
TAMPA, FL 33618-1293
TEL: (813) 623-2323, FAX: (813) 626-2637

Key Plan



Sheet Title:

ENLARGED RAMP PLANS

Project No: 032112001

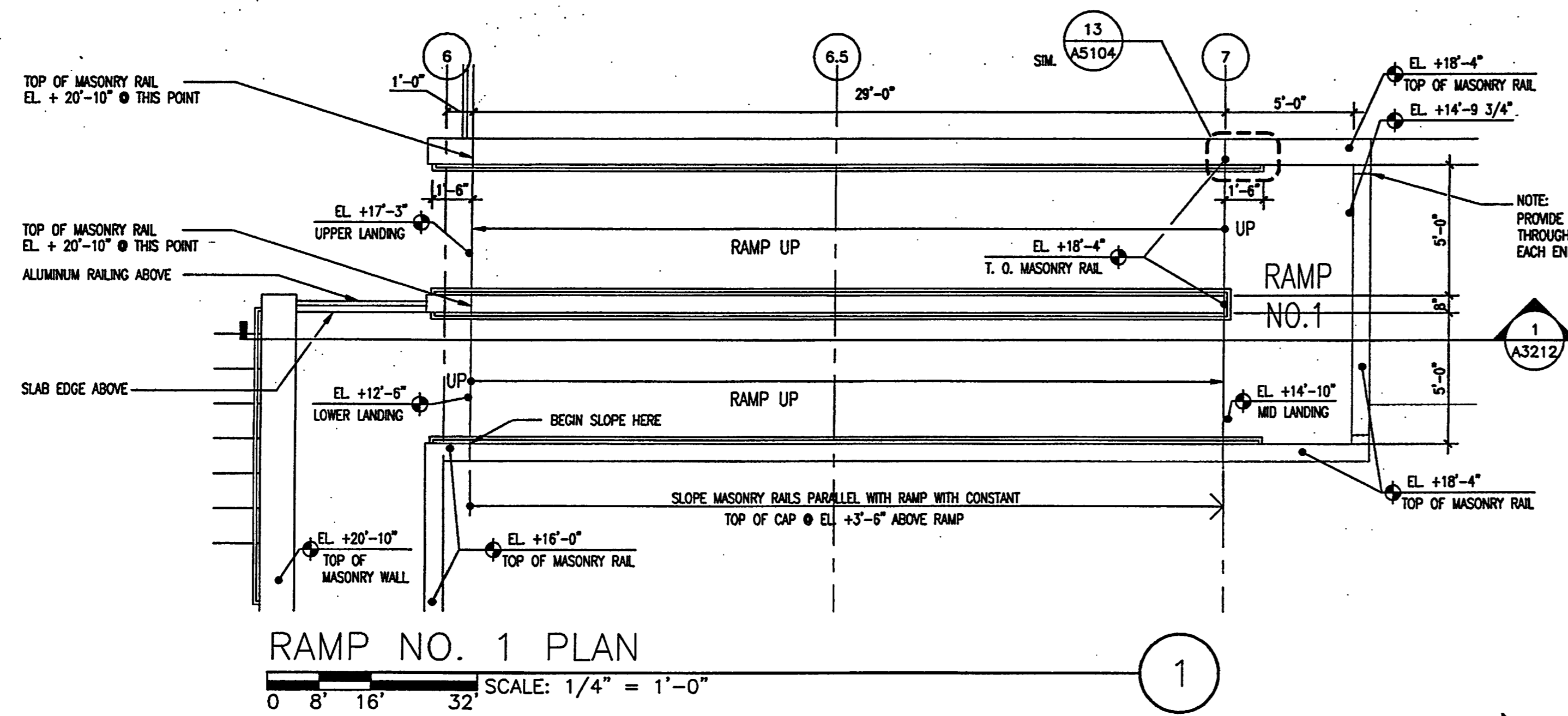
ISSUE	DATE
Permit Set	April 16, 2001
For construction	August 17, 2001

Drawing No:

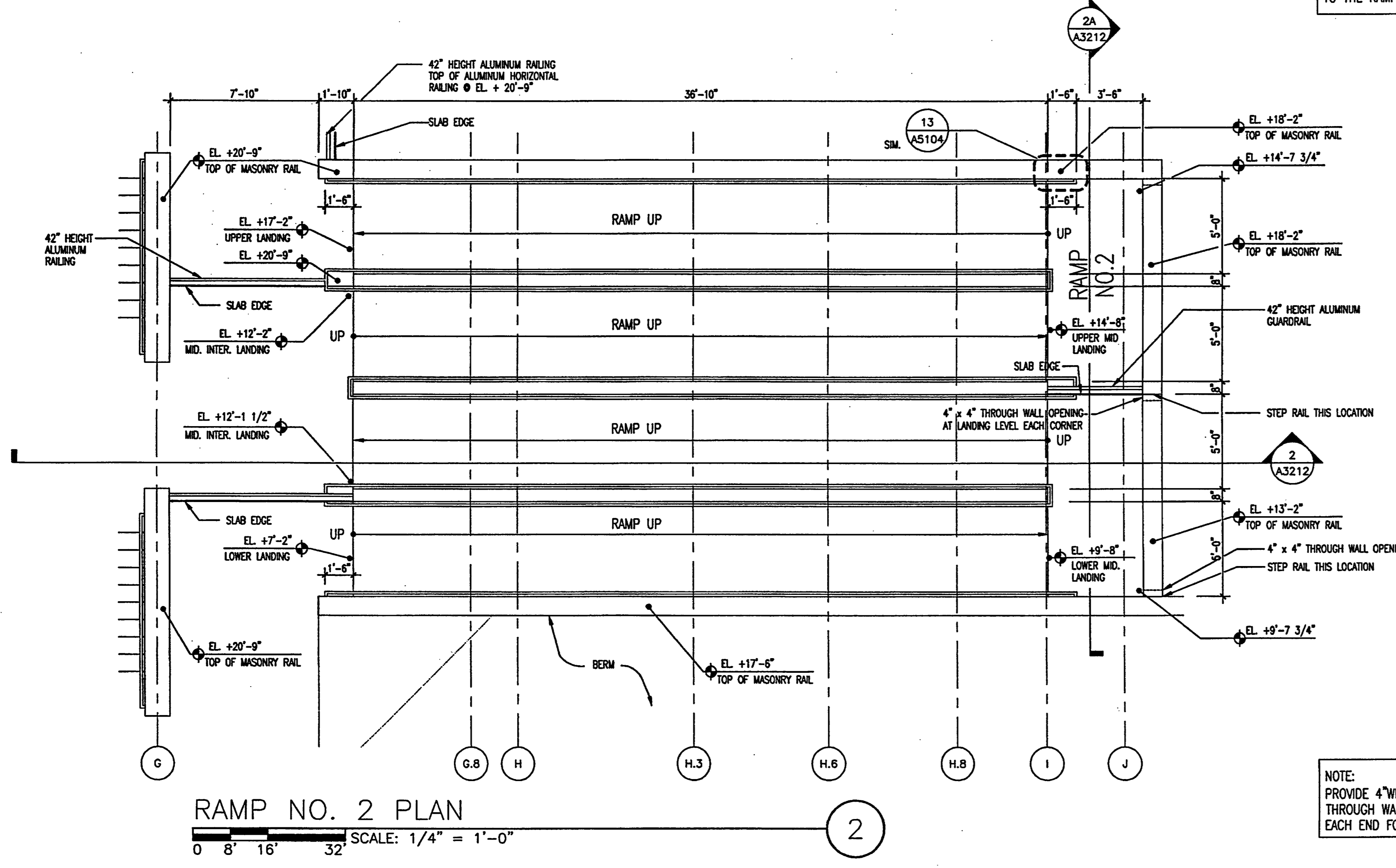
A3.2.02

Professional of Record: Richard Foley
Discipline: Architecture
Registration No. AR0011679

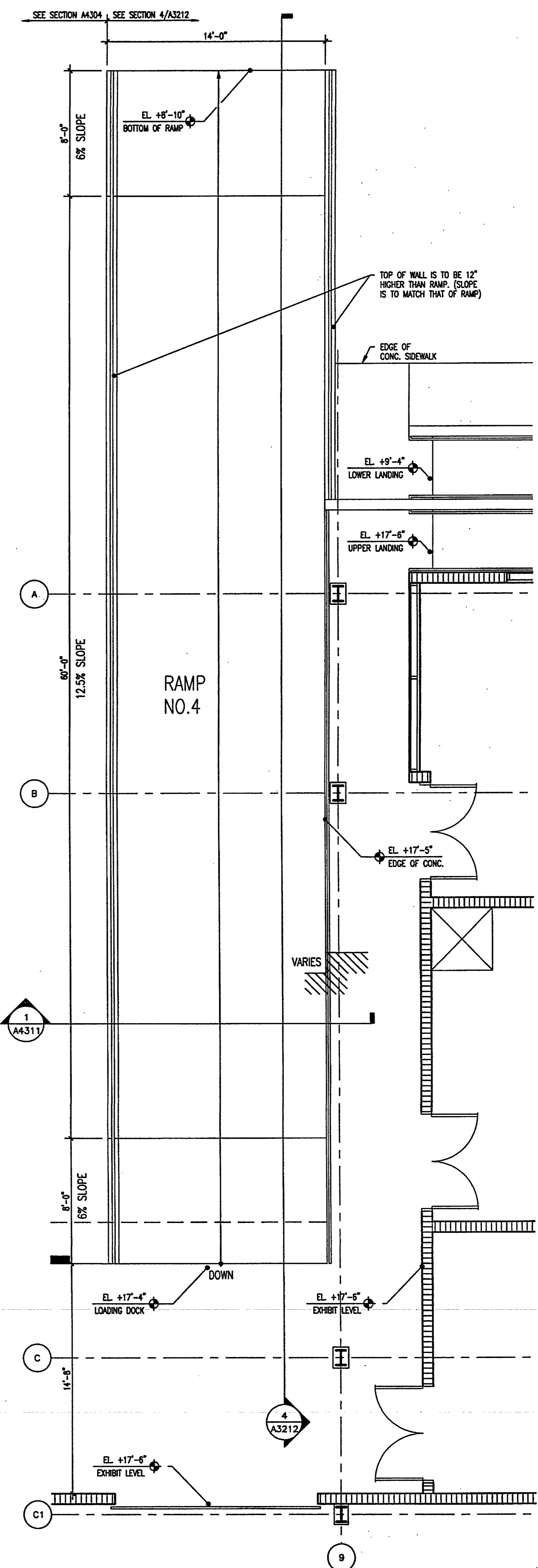
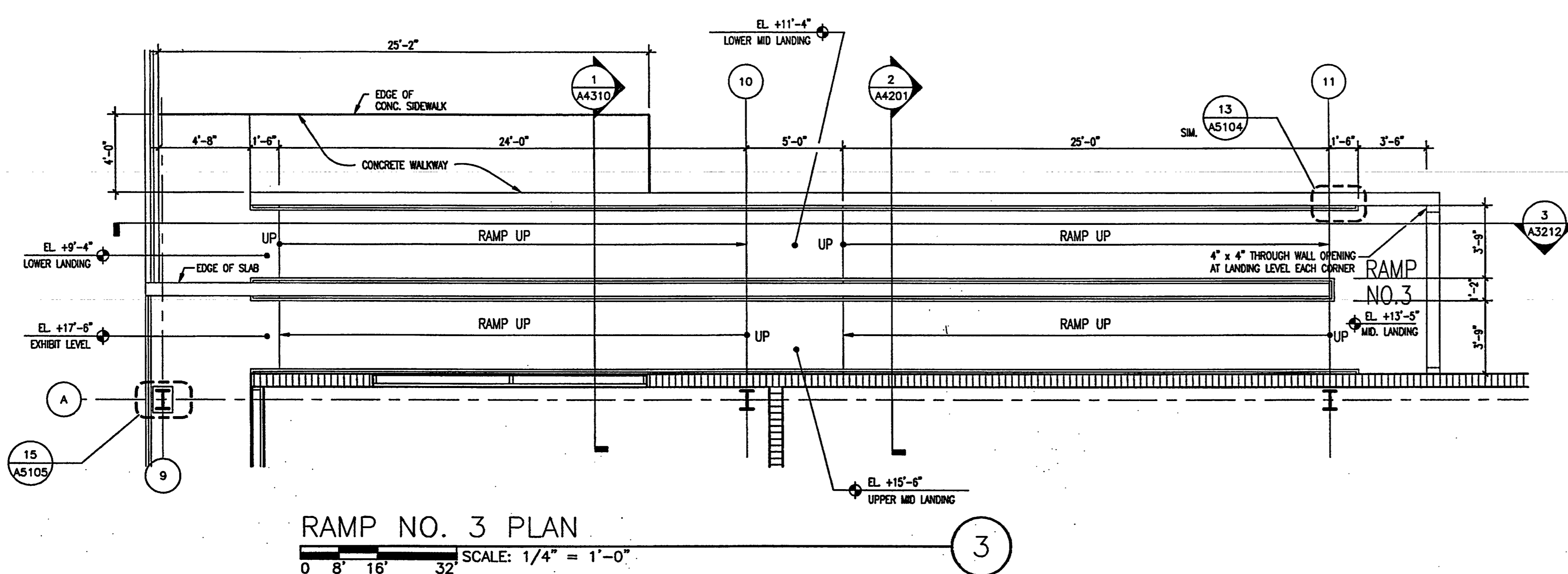
Seal:



NOTE:
ALL RAMP SURFACES SHALL RECEIVE
A LIGHT BROOM FINISH PERPENDICULAR
TO THE RAMP'S SLOPE



NOTE:
PROVIDE 4" WIDE x 4" HIGH OPENINGS
THROUGH WALL AT LANDINGS AT
EACH END FOR DRAINAGE



AS-BUILT



Okaloosa County
Conference / Civic Center
Okaloosa Island
Okaloosa County, Florida

Spillis Candela DMJM
ARCHITECT OF RECORD
1560 ORANGE AVE., STE. 100
WINTER PARK, FL 32789
Tel: (407) 844-3644 • Fax: (407) 644-6197
Florida License AA0003296

Blinn Van Mater, Architect
ASSOCIATE ARCHITECT
201 MIRACLE STRIP PARKWAY S.E. SUITE C
FORT WALTON BEACH, FL 32548
TEL: (850) 243-9244 • FAX: (850) 243-9298

Spillis Candela DMJM
STRUCTURAL, MECHANICAL, ELECTRICAL,
PLUMBING, FIRE PROTECTION ENGINEERS,
AND INTERIOR DESIGNERS
800 DOUGLAS ENTRANCE SUITE 200
CORAL GABLES, FLORIDA 33134 - 3119
TEL: (305) 444-4691 • FAX: (305) 447-3558

Choctaw Engineering, Inc.
CIVIL ENGINEER
112 TRUXTON AVENUE
FORT WALTON BEACH, FL 32547
TEL: (850) 862-8611 • FAX: (850) 863-8059

William H. Smith
and Associates, Inc.
LANDSCAPE ARCHITECT
3 HOLLY AVENUE
SHALMAR, FLORIDA 32579
TEL: (850) 651-6058 • FAX: (850) 651-3798

Coertini Associates, Inc.
TELECOMMUNICATIONS CONSULTANTS
200 SOUTH ORANGE AVENUE
ORLANDO, FL 32081
TEL: (407) 999-8990 • FAX: (407) 999-7817

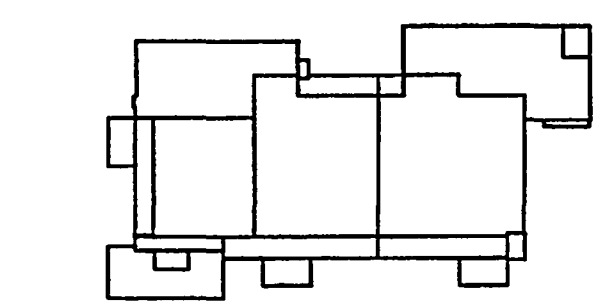
General Hotel and Restaurant
Supply Corporation
KITCHEN + FOOD SERVICE CONSULTANTS
7300 NW 77th STREET
MIAMI, FL 33168-2289
TEL: (305) 865-8651 • FAX: (305) 863-4919

Francis Daniel Consulting
Alliance, Inc.
AUDIO VISUAL + ACoustICAL CONSULTANTS
400 NORTH FLICKER DRIVE SUITE 1201
WEST PALM BEACH, FLORIDA 33401-4315
TEL: (561) 833-8632 • FAX: (561) 833-8643

Rolf Jensen and Associates, Inc.
LIFE SAFETY CODE CONSULTANTS
3504 LAKE LYNDIA DRIVE SUITE 110
ORLANDO, FL 32818
TEL: (407) 381-7771 • FAX: (407) 381-5555

Construction Moisture
Consulting, Inc.
WATER PROOFING CONSULTANTS
3914 HWY. 301 NORTH, STE. 200
TAMPA, FL 33618-1283
TEL: (813) 623-2323 • FAX: (813) 626-2637

Key Plan



Sheet Title:

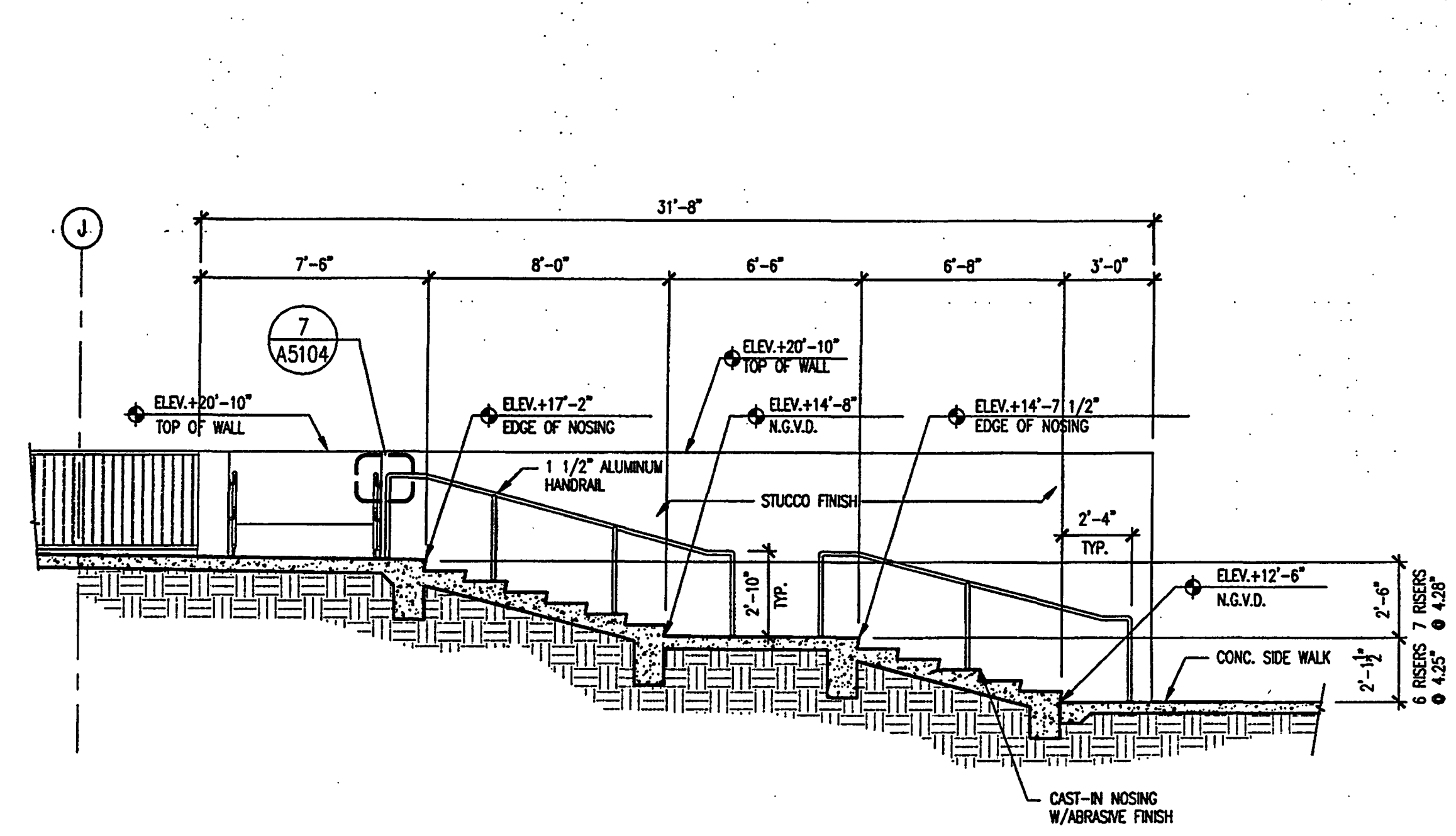
STAIR SECTIONS

Project No: 032112001
ISSUE DATE
Permit Set April 16, 2001
For construction August 17, 2001

Drawing No:
A3.2.11

Professional of Record: Richard Foley
Discipline: Architecture
Registration No. AR0011679

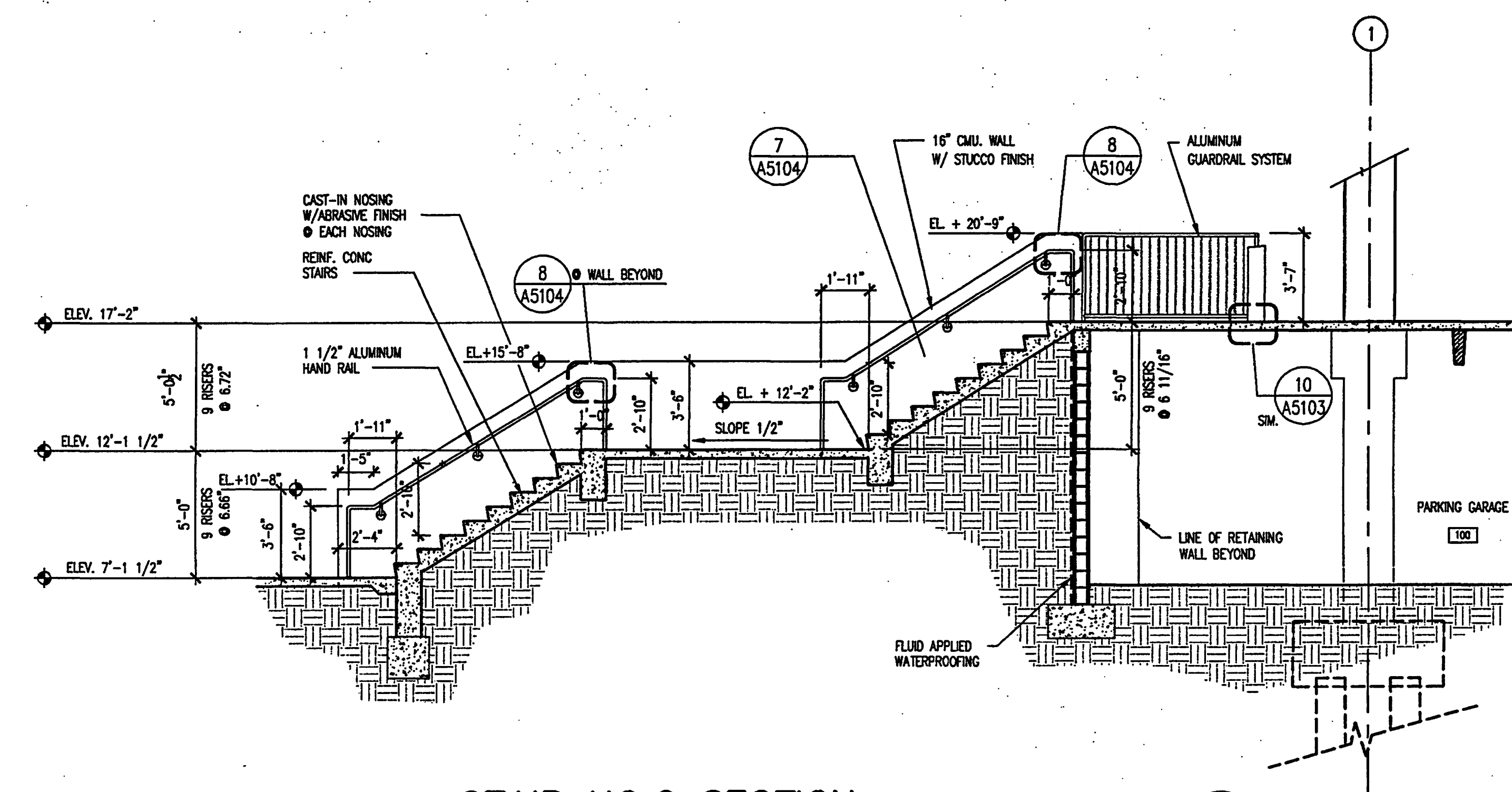
Seal:



STAIR NO.1 SECTION

SCALE: 1/4" = 1'-0"
2001AV01

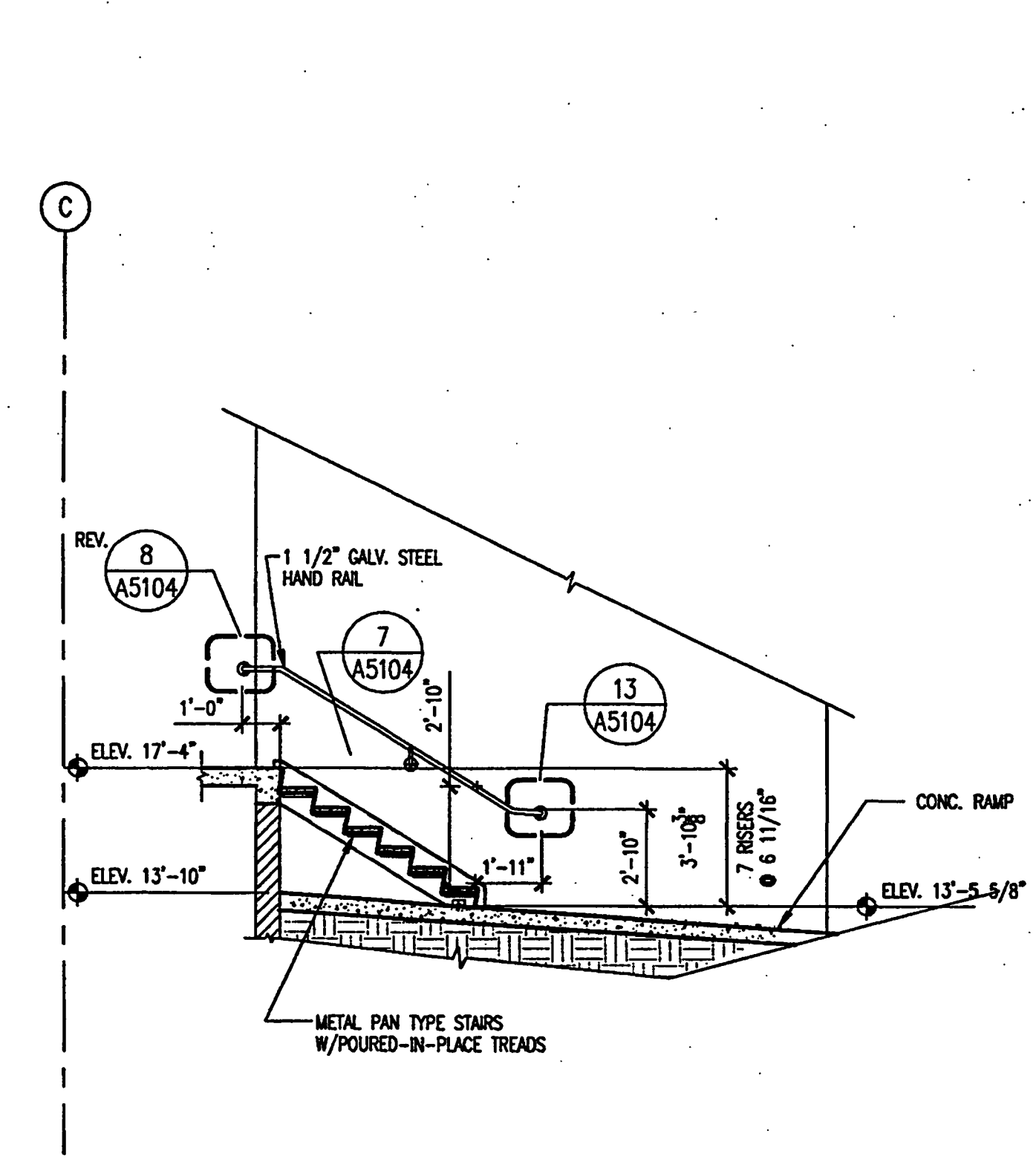
1



STAIR NO.2 SECTION

SCALE: 1/4" = 1'-0"
2001AV01

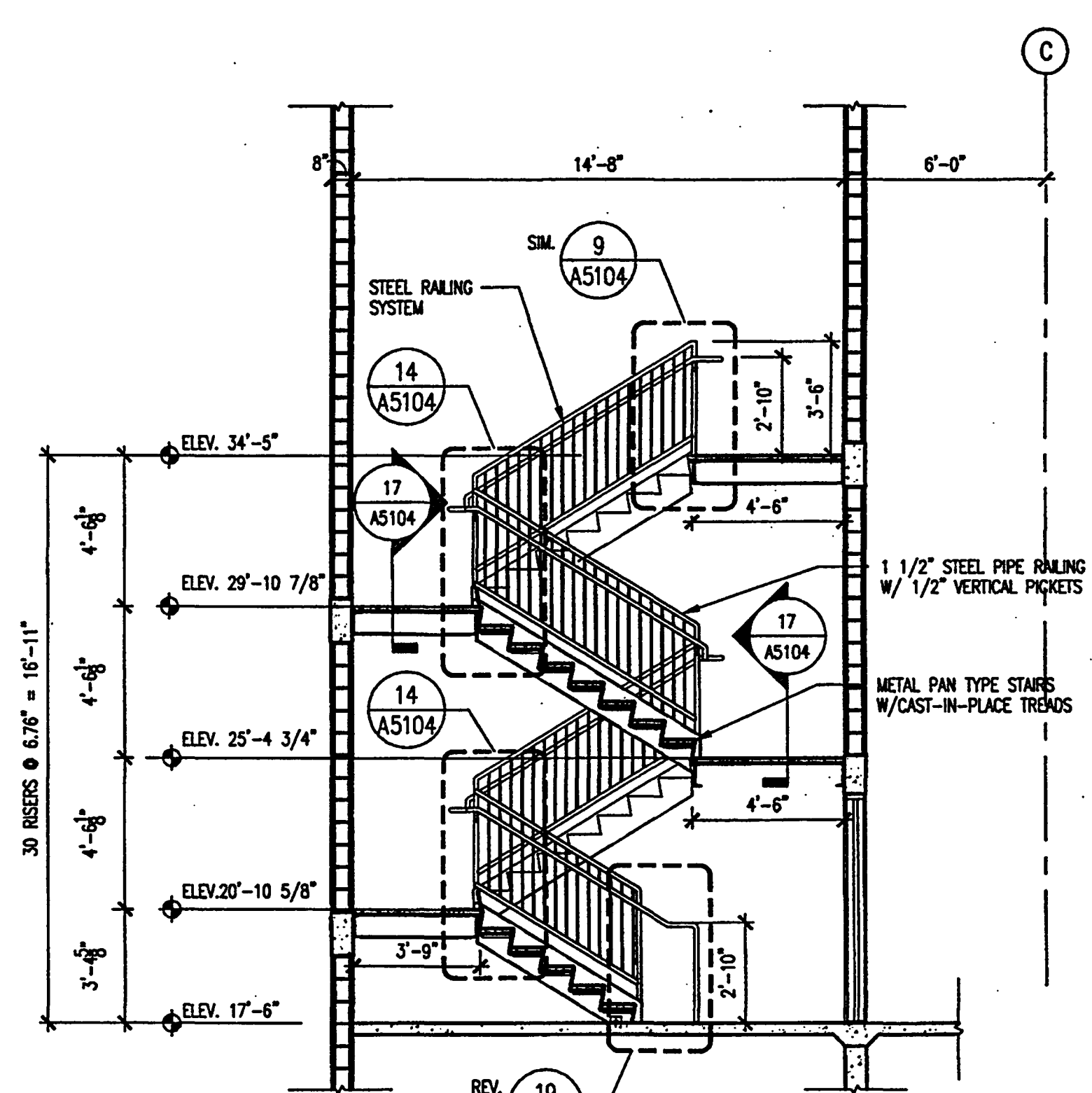
2



STAIR NO.3 SECTION

SCALE: 1/4" = 1'-0"
2001AV01

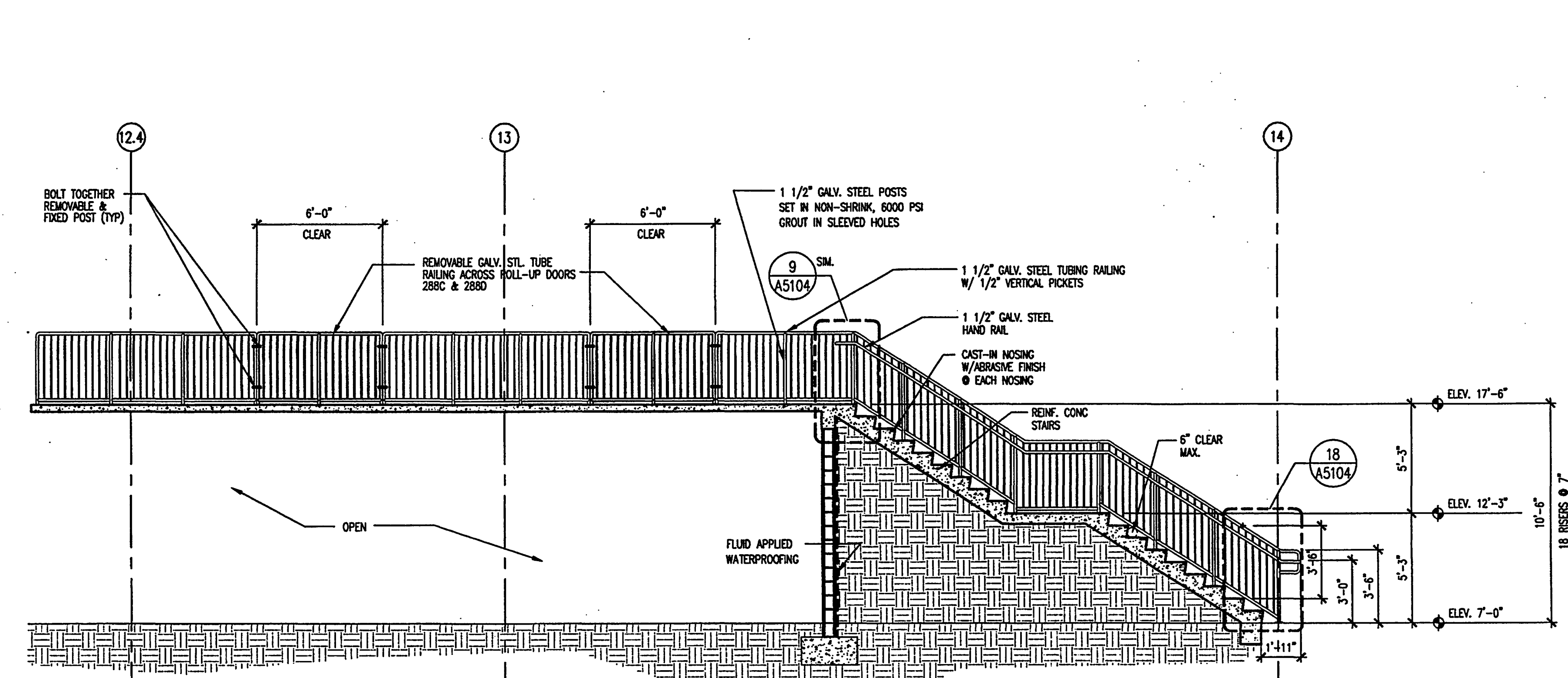
3



STAIR NO.4 SECTION (5 SIM.)

SCALE: 1/4" = 1'-0"
2001AV01

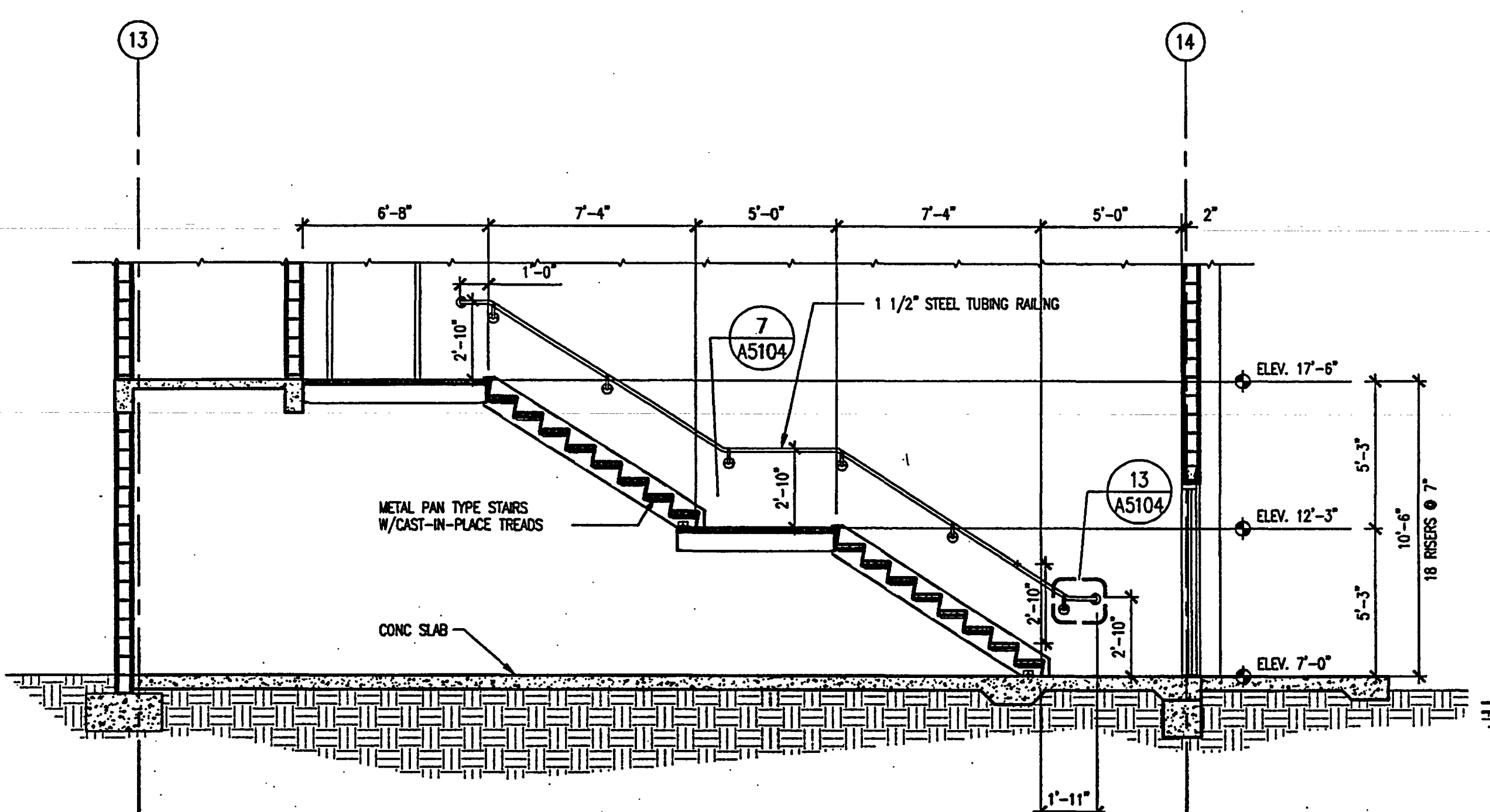
4



STAIR NO.6 SECTION

SCALE: 1/4" = 1'-0"
2001AV01

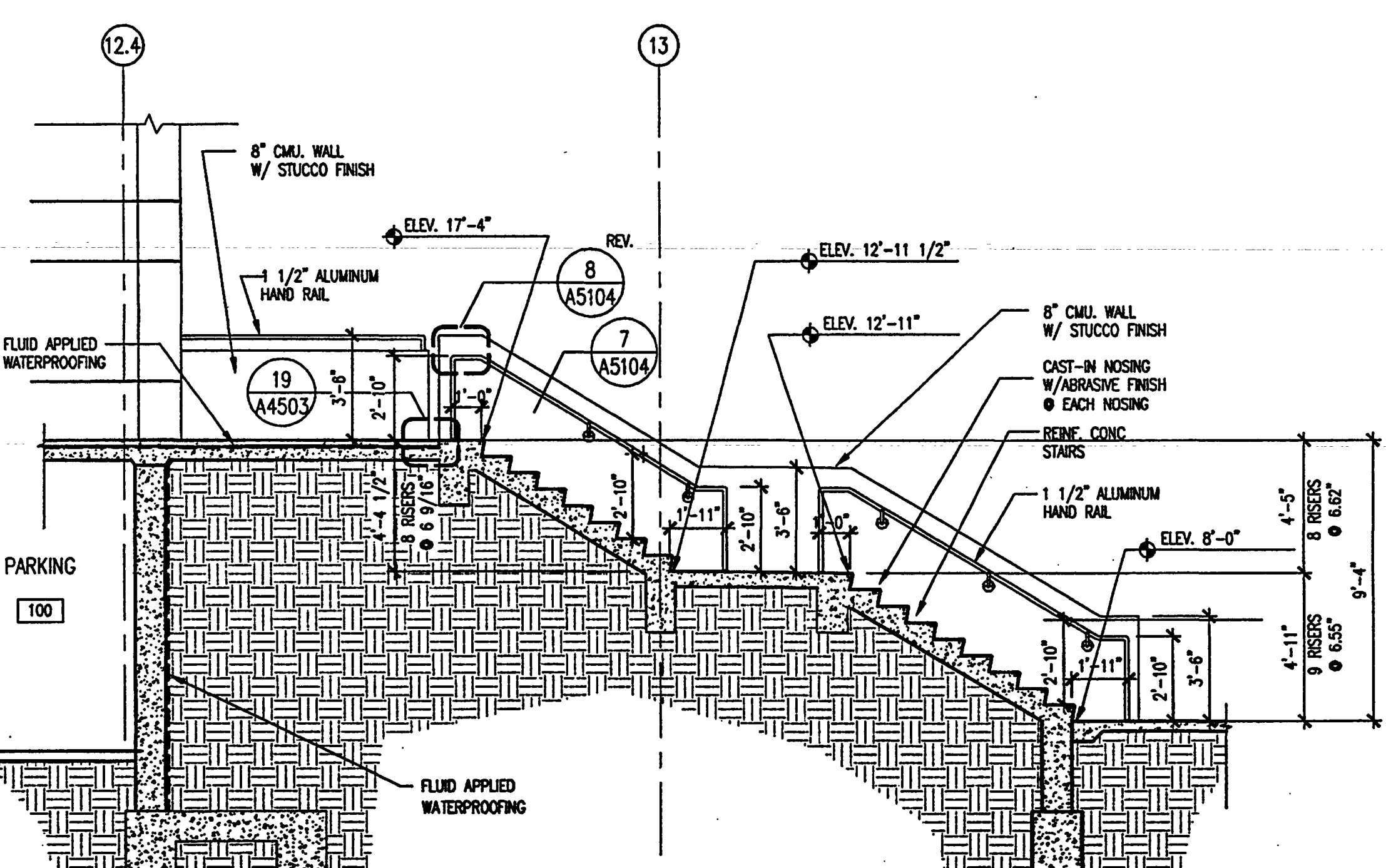
6



STAIR NO.7 SECTION

SCALE: 1/4" = 1'-0"
2001AV01

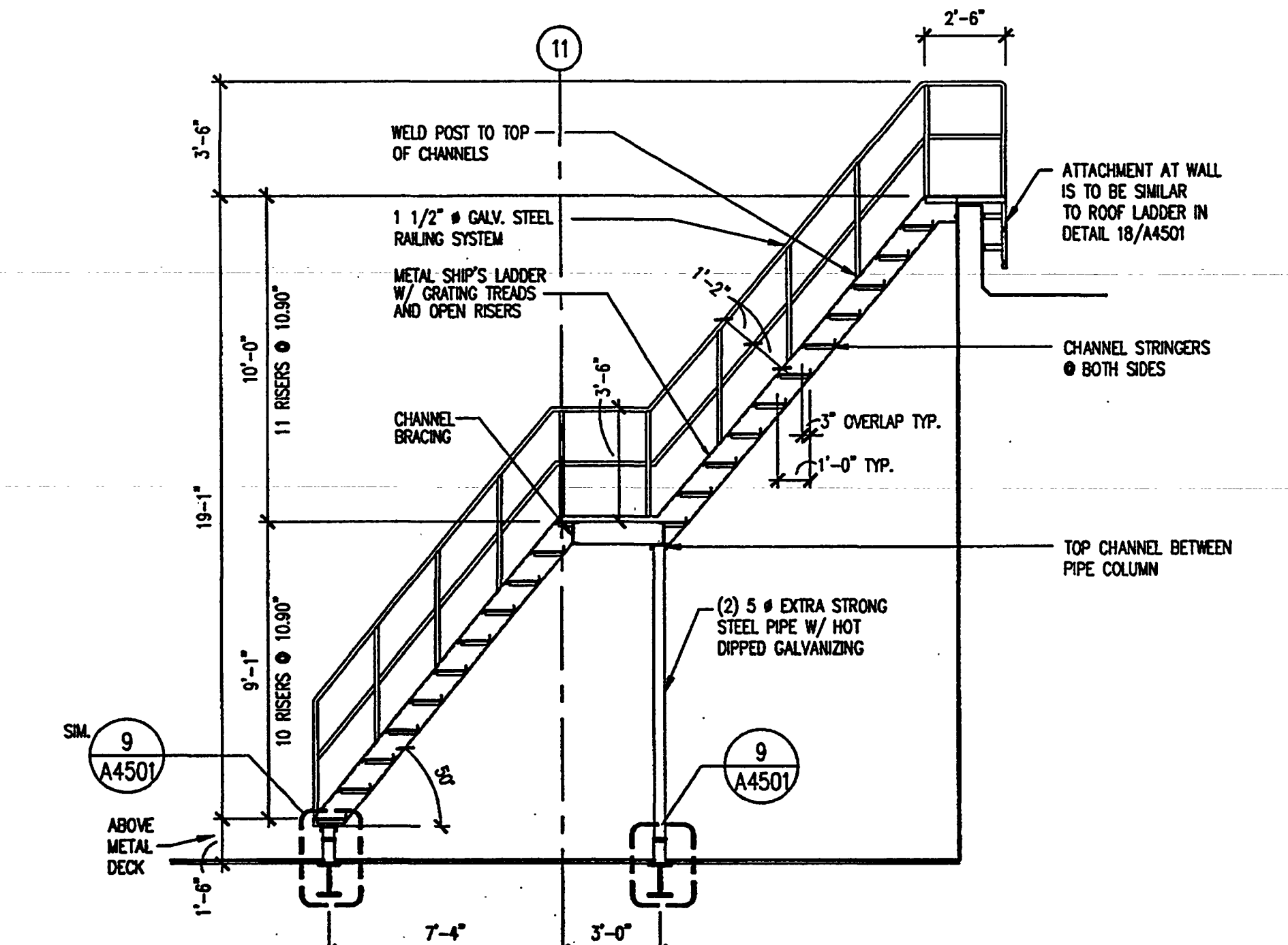
7



STAIR NO.8 SECTION

SCALE: 1/4" = 1'-0"
2001AV01

8



SHIP'S LADDER SECTION

SCALE: 1/4" = 1'-0"
2001AV01

9

AS-BUILT