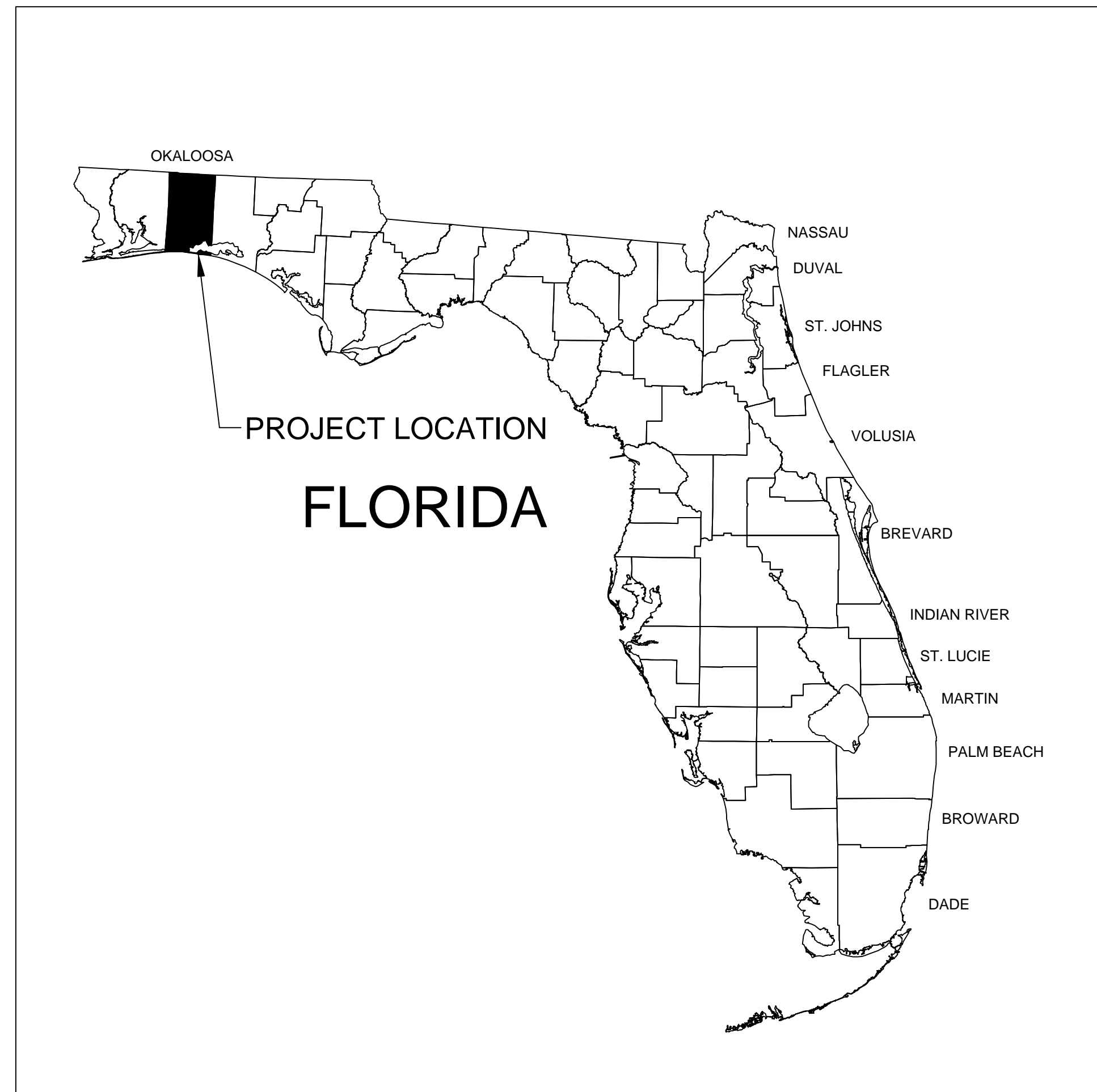


OKALOOSA COUNTY ARTIFICIAL REEF CONSTRUCTION PROJECT

OKALOOSA COUNTY, FLORIDA

DRAFT

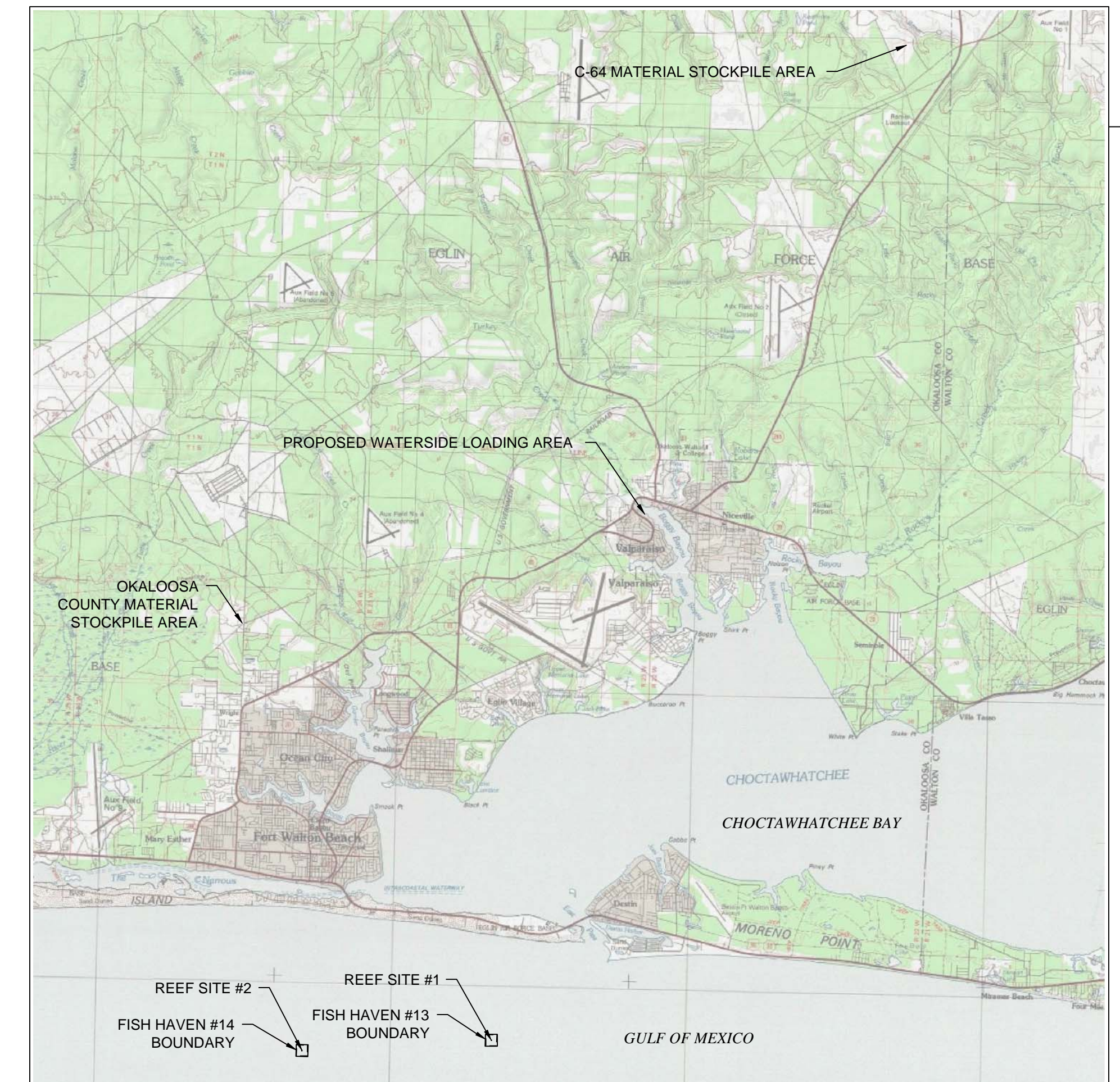


LOCATION MAP
N.T.S.



DRAWING INDEX

- C-1 TITLE SHEET
- C-2 PROJECT OVERVIEW
- C-3 ARTIFICIAL REEF PLAN
- C-4 NAUTICAL CHART PLAN



VICINITY MAP

1" = 12,000' (22x34)
1" = 24,000' (11x17)

REFERENCE:
USGS 30X60 QUADRANGLE MAP,
FT. WALTON BEACH, FLORIDA 1978

OWNER CONTACT INFO
OKALOOSA BOARD OF COUNTY COMMISSIONERS
1804 LEWIS TURNER BLVD, SUITE 100
FT. WALTON BEACH, FL 32547
(850) 651-7105

ENGINEER CONTACT INFORMATION
MATTHEW A. TRAMMELL, P. E.
TAYLOR ENGINEERING, INC.
1221 AIRPORT ROAD, SUITE 210
DESTIN, FL 32541
(850) 460-7040
(850) 375-8651

GENERAL PROJECT LOCATION
OKALOOSA COUNTY, FLORIDA
OKALOOSA COUNTY MATERIAL STOCKPILE:
LATITUDE: N30.4825
LONGITUDE: W86.6384

C-64 MATERIAL STOCKPILE:
LATITUDE: N30.6629
LONGITUDE: W86.4075

PROPOSED WATERSIDE STAGING AREA:
LATITUDE: N30.5181
LONGITUDE: W86.4971

REEF SITE #1:
LATITUDE: N30.3565
LONGITUDE: W86.5479

REEF SITE #2:
LATITUDE: N30.3524
LONGITUDE: W86.6146

SUNSHINE STATE ONE CALL OF
FLORIDA
SUNSHINE 811 - ALWAYS CALL 811
BEFORE YOU DIG
1-800-638-4097

THESE CONSTRUCTION DRAWINGS ARE PROVIDED FOR BIDDING PURPOSES ONLY.
THE SELECTED CONTRACTOR WILL BE PROVIDED SIGNED/SEALED CONSTRUCTION
DRAWINGS IN DIGITAL AND HARDCOPY FORMATS.

TAYLOR ENGINEERING INC.
1221 AIRPORT ROAD, SUITE 210
DESTIN, FL 32541
(850) 460-7040
10151 DEERWOOD PARK BLVD.
BLDG. 300, SUITE 300
JACKSONVILLE, FLORIDA 32256
(904)-731-7040
CERTIFICATE OF AUTHORIZATION # 4815

PRELIMINARY DRAWINGS: THESE DRAWINGS ARE NOT IN FINAL FORM, BUT ARE BEING TRANSMITTED FOR BIDDING PURPOSES ONLY	
PROJECT TITLE OKALOOSA COUNTY ARTIFICIAL REEF CONSTRUCTION PROJECT OKALOOSA COUNTY, FLORIDA	
PROJECT NO	C2014-029
DATE	FEB 2015

SEAL

DRAFT

MATTHEW A. TRAMMELL P.E.# 69244

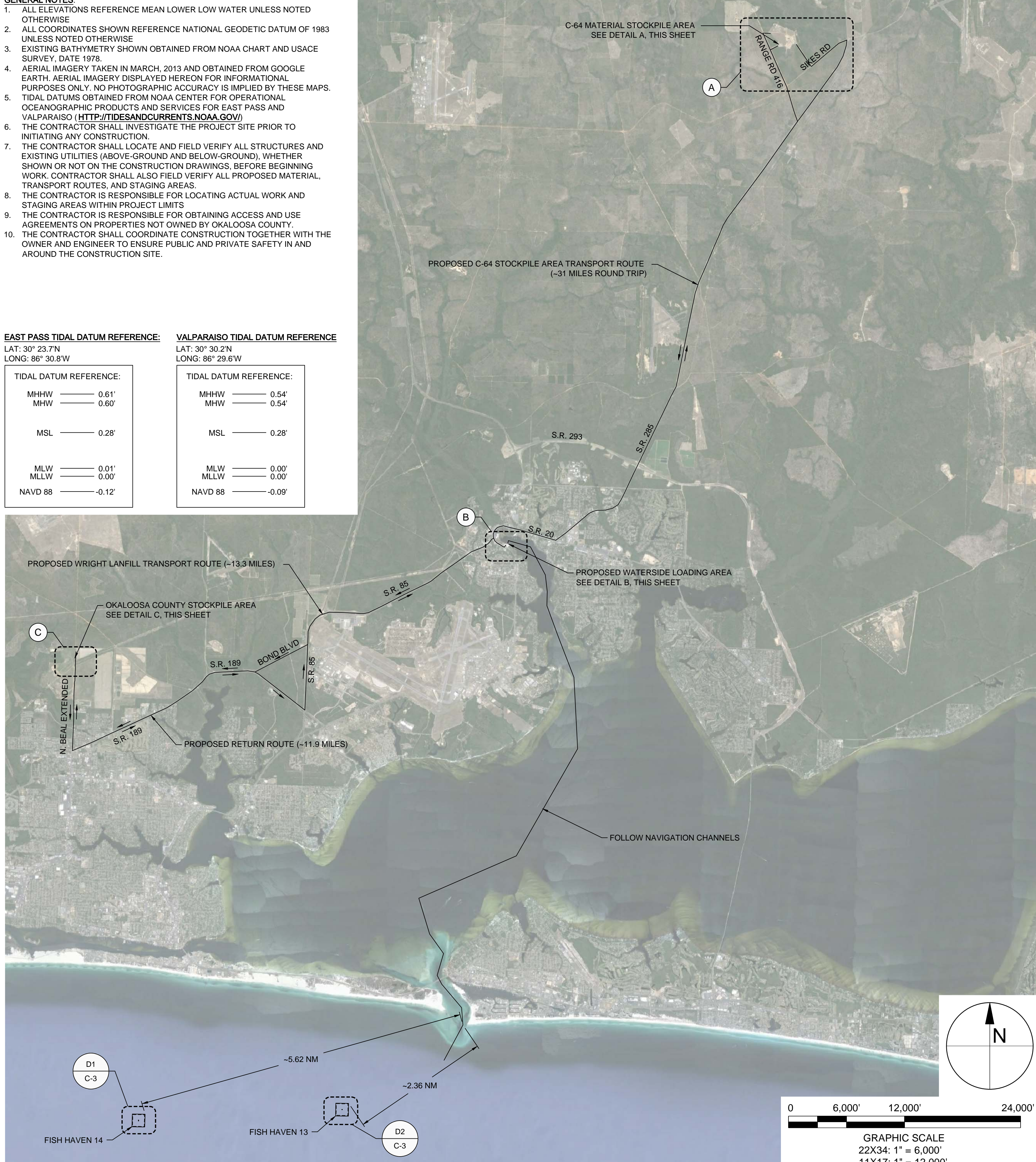
C-1

SHEET 1 OF 4

ANTON, 3/20/2015 12:49:55 PM, X:\yay\Projects\2014-029 Okaloosa Reef\Construction\2014-029-C-Title.dwg

- GENERAL NOTES:**
- ALL ELEVATIONS REFERENCE MEAN LOWER LOW WATER UNLESS NOTED OTHERWISE
 - ALL COORDINATES SHOWN REFERENCE NATIONAL GEODETIC DATUM OF 1983 UNLESS NOTED OTHERWISE
 - EXISTING BATHYMETRY SHOWN OBTAINED FROM NOAA CHART AND USACE SURVEY, DATE 1978.
 - AERIAL IMAGERY TAKEN IN MARCH, 2013 AND OBTAINED FROM GOOGLE EARTH. AERIAL IMAGERY DISPLAYED HEREON FOR INFORMATIONAL PURPOSES ONLY. NO PHOTOGRAPHIC ACCURACY IS IMPLIED BY THESE MAPS.
 - TIDAL DATUMS OBTAINED FROM NOAA CENTER FOR OPERATIONAL OCEANOGRAPHIC PRODUCTS AND SERVICES FOR EAST PASS AND VALPARAISO ([HTTP://TIDESANDCURRENTS.NOAA.GOV/](http://tidesandcurrents.noaa.gov/))
 - THE CONTRACTOR SHALL INVESTIGATE THE PROJECT SITE PRIOR TO INITIATING ANY CONSTRUCTION.
 - THE CONTRACTOR SHALL LOCATE AND FIELD VERIFY ALL STRUCTURES AND EXISTING UTILITIES (ABOVE-GROUND AND BELOW-GROUND), WHETHER SHOWN OR NOT ON THE CONSTRUCTION DRAWINGS, BEFORE BEGINNING WORK. CONTRACTOR SHALL ALSO FIELD VERIFY ALL PROPOSED MATERIAL, TRANSPORT ROUTES, AND STAGING AREAS.
 - THE CONTRACTOR IS RESPONSIBLE FOR LOCATING ACTUAL WORK AND STAGING AREAS WITHIN PROJECT LIMITS.
 - THE CONTRACTOR IS RESPONSIBLE FOR OBTAINING ACCESS AND USE AGREEMENTS ON PROPERTIES NOT OWNED BY OKALOOSA COUNTY.
 - THE CONTRACTOR SHALL COORDINATE CONSTRUCTION TOGETHER WITH THE OWNER AND ENGINEER TO ENSURE PUBLIC AND PRIVATE SAFETY IN AND AROUND THE CONSTRUCTION SITE.

EAST PASS TIDAL DATUM REFERENCE:		VALPARAISO TIDAL DATUM REFERENCE:	
LAT: 30° 23.7'N		LAT: 30° 30.2'N	
LONG: 86° 30.8'W		LONG: 86° 29.6'W	
TIDAL DATUM REFERENCE:		TIDAL DATUM REFERENCE:	
MHHW	0.61'	MHHW	0.54'
MHW	0.60'	MHW	0.54'
MSL	0.28'	MSL	0.28'
MLW	0.01'	MLW	0.00'
MLLW	0.00'	MLLW	0.00'
NAVD 88	-0.12'	NAVD 88	-0.09'



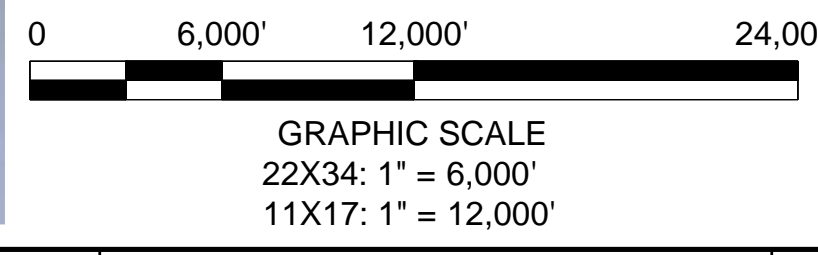
A C-64 MATERIAL STOCKPILE AREA
 22X34: 1" = 1,000'
 11X17: 1" = 2,000'



B PROPOSED WATERSIDE LOADING AREA
 22X34: 1" = 400'
 11X17: 1" = 800'



C OKALOOSA CO STOCKPILE AREA
 22X34: 1" = 400'
 11X17: 1" = 800'



TAYLOR ENGINEERING INC.
 1221 AIRPORT ROAD, SUITE 210
 DESTIN, FL 32541
 (850) 460-7040
 10151 DEERWOOD PARK BLVD.
 BLDG. 300, SUITE 300
 JACKSONVILLE, FLORIDA 32256
 (904)-731-7040
 CERTIFICATE OF AUTHORIZATION # 4815

SEAL

DRAFT

MATTHEW A. TRAMMELL P.E. # 69244

PROJECT TITLE

**OKALOOSA COUNTY
 ARTIFICIAL REEF
 CONSTRUCTION PROJECT**
 OKALOOSA COUNTY, FLORIDA

SUNSHINE STATE ONE CALL OF FLORIDA
 SUNSHINE 811 - ALWAYS CALL 811 BEFORE YOU DIG
 1-800-638-4097

PRELIMINARY DRAWINGS; THESE DRAWINGS ARE NOT IN FINAL FORM, BUT ARE BEING TRANSMITTED FOR BIDDING PURPOSES ONLY

NO.	REVISIONS / SUBMISSIONS	DATE	ZONE

PROJECT NO	C2014-029
DATE	FEB 2015
DESIGNED	MAT
DRAWN	AF
CHECKED	MAT
REVIEWED	DG
SCALE	AS SHOWN

DRAWING TITLE

PROJECT OVERVIEW

ANTON, 3/20/2015 12:50:13 PM, X:\gyl\Projects\2014-029 Okaloosa Reef\Construction\2014-029-C-ProjectOverview.dwg

